



COMPANY PRESENTATION

Overview

NAMA Consulting Engineers and Planners SA was founded in early 90's and is one of the leading Greek Engineering & Planning Firms, well-known for its reliability, flexibility and strong execution track-record.

NAMA covers the whole range of engineering topics, achieving total solutions from the preliminary design up to the management of major projects. Our basic principle is the provision of independent consultancy and design services through integrated design.

We understand that the modern integrated design requires a multidisciplinary approach for the resolution of problems and the adoption of high capacity systems. For this reason, we encourage the application of the principle of “sustainable development”, in conjunction with advanced solutions orientated to the needs of our clients. Innovative methods, new technologies, digital tools and broad experience are the keys to meet our customer’s challenges and support close dialogue with our partners.

Based on our word-class competencies within engineering, geology and environmental services and with more than 90 skilled employees, we tackle challenges to provide smart and reliable solutions for our customers, while we collaborate with special consultants to deliver multi-disciplinary holistic advice at each stage of a project or business development.

Our projects have been implemented in multiple countries worldwide in AFRICA, MIDDLE EAST and EUROPE.

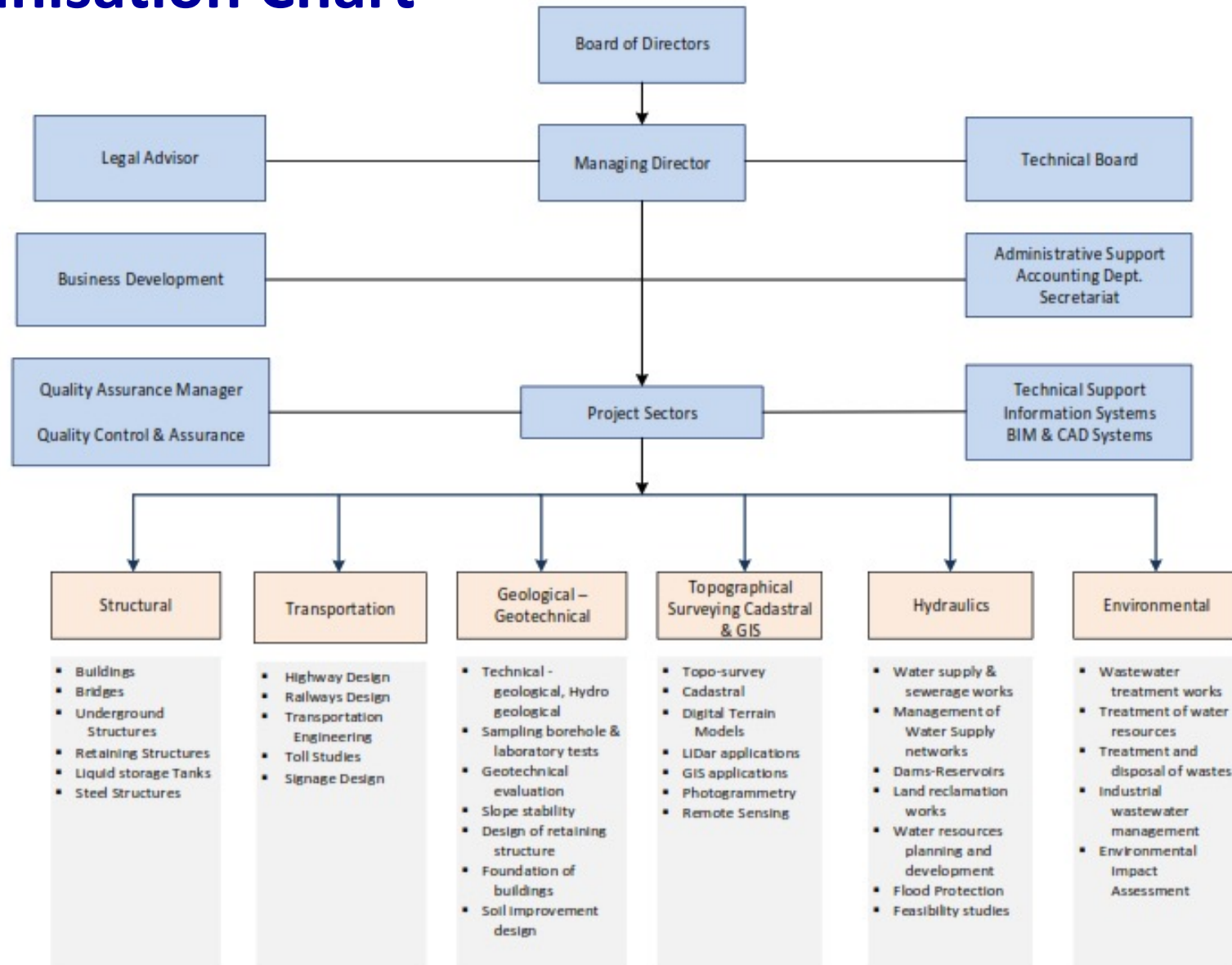
Our Services

In its activities NAMA specializes in complex, multidisciplinary projects:

- Transport Infrastructure: air, rail, road and road traffic
- Water Management, Water Supply, Sewerage & Waste Water Treatment Plants, Flood protection and Solid Waste management projects
- Environmental studies
- Building facilities for all purposes
- Structural Projects (bridges, tunnels, complex structures, etc)
- Geographic Information Systems, Surveying & Cadastral Projects
- Geological and Geotechnical Research & Studies
- Project Management & Planning

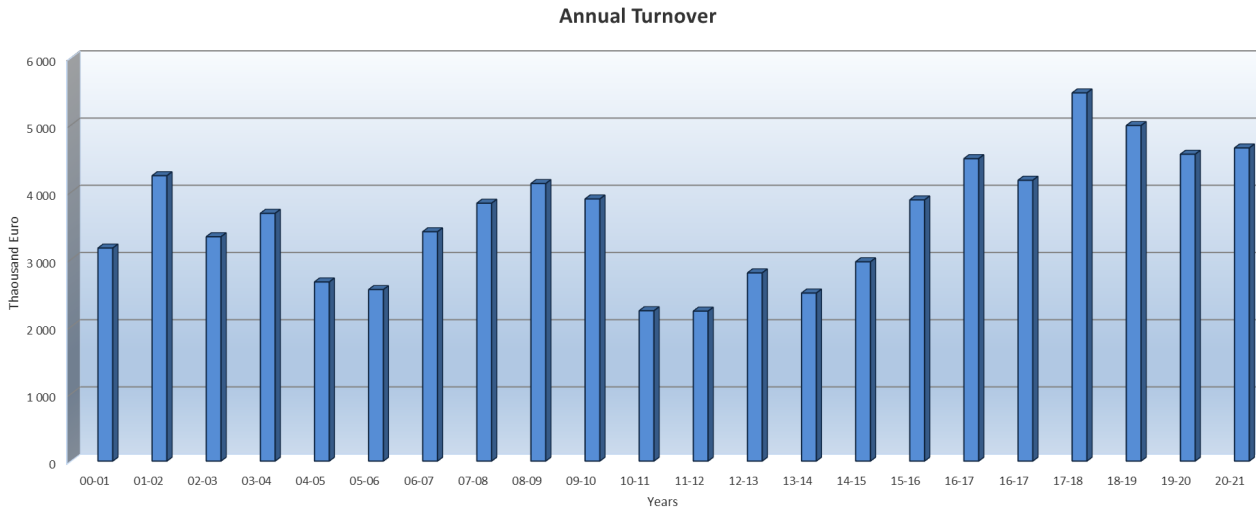


Organisation Chart



Financial Data

The annual turnover of the company of the last 20 years is presented in the following chart:

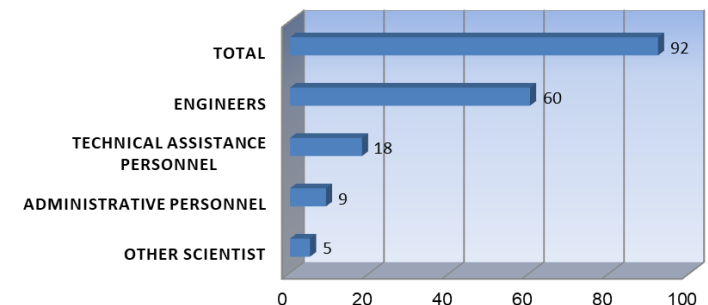


Staff- Resources

The basic shareholders of NAMA are engineers of various specializations, who offer their services daily from several administration and technical positions.

The company human resources consists of scientists and engineers of various skills and specializations, covering a wide range of consultancy services. The employees normally have long time occupation with the company.

In total, NAMA S.A. occupies more than 90 employees on a permanent basis, of which, more than 40 have obtained Bachelor and Master Degrees.



Certifications

NAMA is accredited and applies Management, Quality and Environmental Management systems in accordance with the EN ISO 27001:2013, EN ISO 9001:2015 and EN ISO 14001:2015 standards.

The company is also accredited and applies a management system in accordance with ISO 19650-1:2018, ISO 19650-2:2018, ISO 19650-3:2020, ISO 19650-5:2020 regarding information management using building information modelling (BIM).

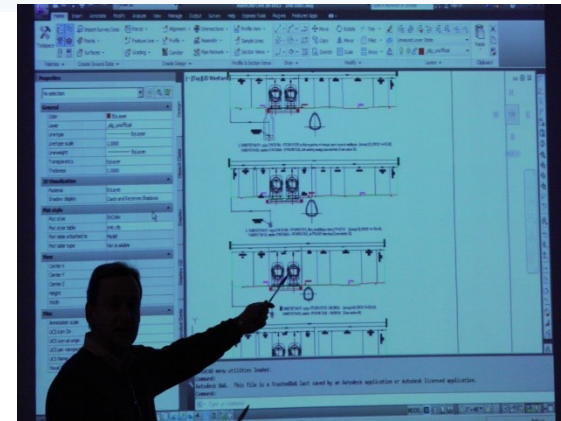
NAMA is specialized in the application of the methodology of "Value Engineering" and occupies certified engineers from SAVE International.



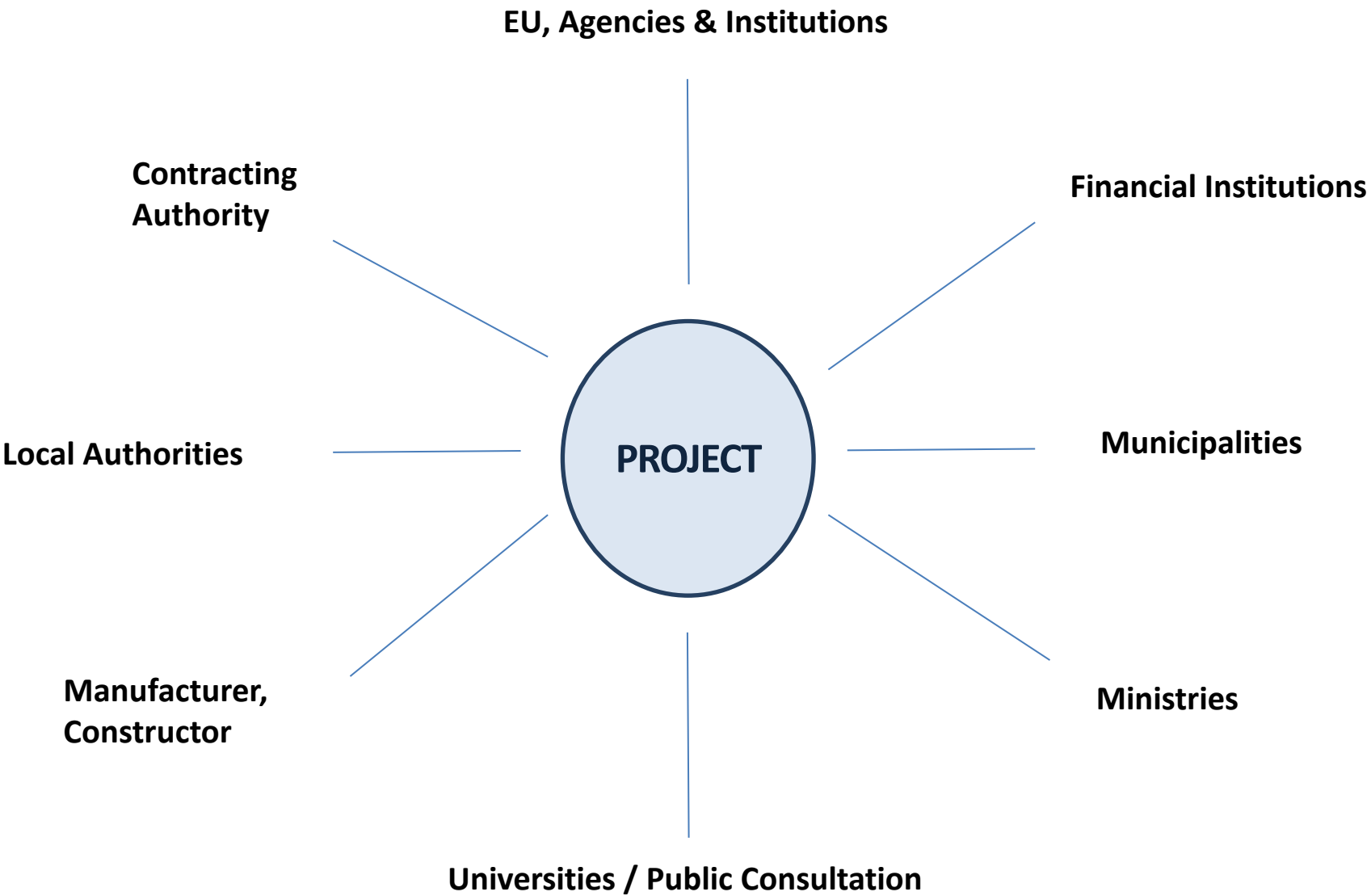
Our Mission

The mission of NAMA is summarized in the following directions:

- provide independent consulting services
- provide high quality design and consultancy services to our clients (public, private and municipal companies and organizations)
- assist our clients in achieving their goals in close cooperation with them
- be recognized as one of the leading companies in the consultancy services in all our sectors
- offer opportunities for professional development to our staff



Experience in cooperating with complex stakeholder structures



Our Equipment

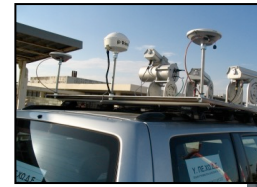


GNSS Receiver

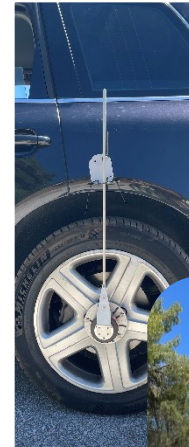


Total Station

TERRESTIAL
MAPPING
SYSTEM



MOBILE MAPPING SYSTEMS



The Laboratory NAMA LAB SA was founded in 2009 with its main field of activity being the execution of tests of *Geotechnical Engineering*, *Construction Materials* and *Quality Control* of major projects.

NAMA participates in the shareholder base of NAMALAB.

Laboratory's equipment consists of high technology devices and apparatus, fully automated in use and outfitted with digital data acquisition system, in accordance with the European and International standards (EN ISO/IEC 17025:2005 standard & the tests executed by the laboratory meet the EN, ASTM, AASHTO, DIN and National standards)

Quality Control at Stavros Niarchos Foundation Cultural Center



Tests executed by NAMA LAB include among others:

- Soil Mechanics
- Rock Mechanics
- Aggregates / Concrete
- Asphalt Bitumen
- In situ testing



Projects

NAMA provides services that cover the overall life cycle of the project from the initial design up its service phase.

The company provides consultancy services for Contractors (Design-Built projects) as well as for the public sector.

The preparation of design is accomplished in close cooperation with the client in order to achieve optimum technical/ economical/ environmentally friendly solutions and within the time schedule.

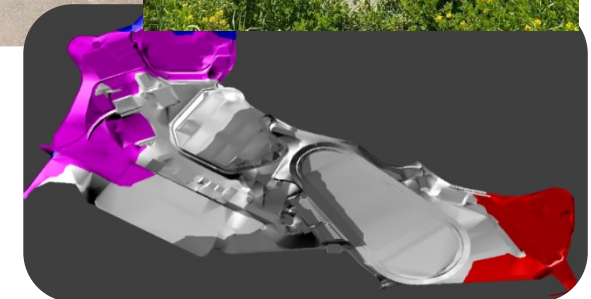
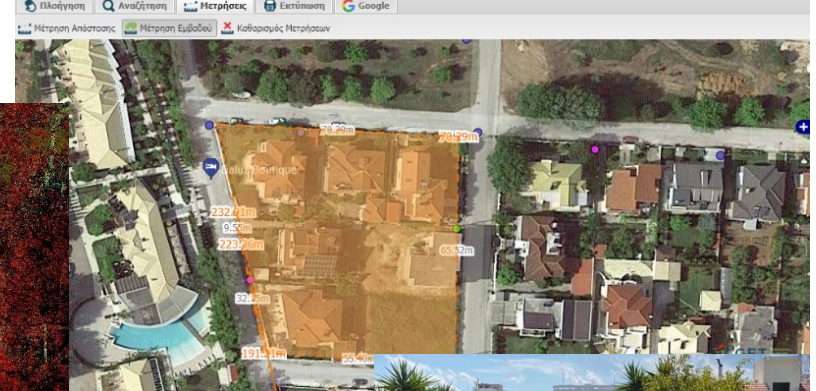
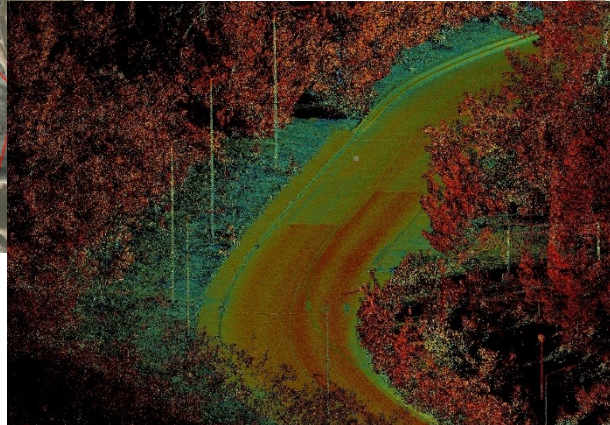
Amongst the services provided are:

- ✓ **Preliminary design**
- ✓ **Feasibility studies – Cost-Benefit analysis**
- ✓ **Environmental studies**
- ✓ **Technical studies**
- ✓ **Tender documents**
- ✓ **Technical consultant services**
- ✓ **Evaluation and check of works and plans**
- ✓ **Construction supervision**
- ✓ **Site investigation**
- ✓ **Operation consultant services**
- ✓ **Value engineering analysis**
- ✓ **Staff training**
- ✓ **Research/ European programs**
- ✓ **Digital mapping and GIS applications**
- ✓ **Models and simulation**
- ✓ **Guidelines, specifications and institutional topics**



**> 900
completed
projects**

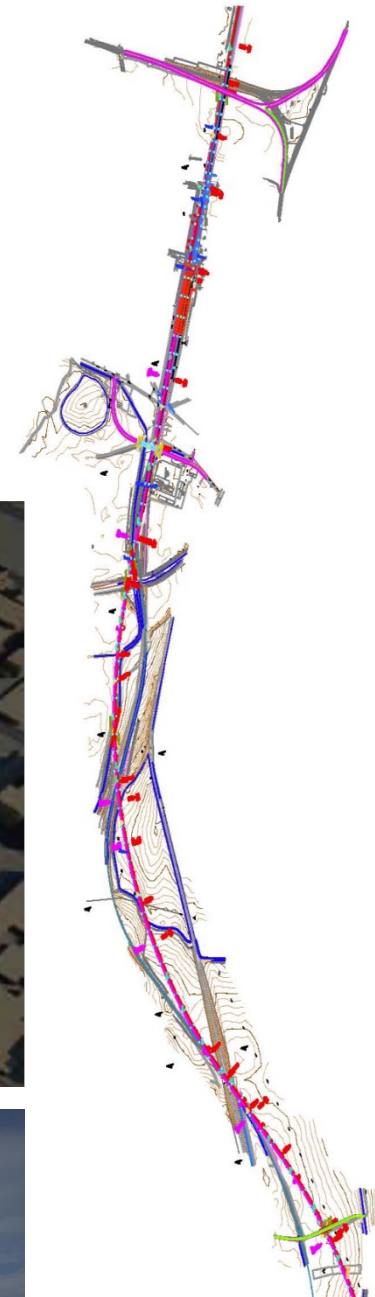
SURVEYING, MAPPING AND GIS SERVICES



- ➔ Surveying Surveys
- ➔ Cadastral surveys
- ➔ Photogrammetric services
- ➔ GIS studies
- ➔ Mobile Mapping Services

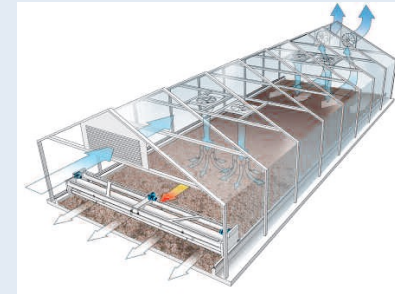
TRANSPORTATION

- ➡ Transport studies
- ➡ Road design
- ➡ Railways planning & design
- ➡ Traffic studies
- ➡ Airports Master Planning and Design
- ➡ Sustainable Urban Mobility Plans (SUMP)
- ➡ Technical consultant

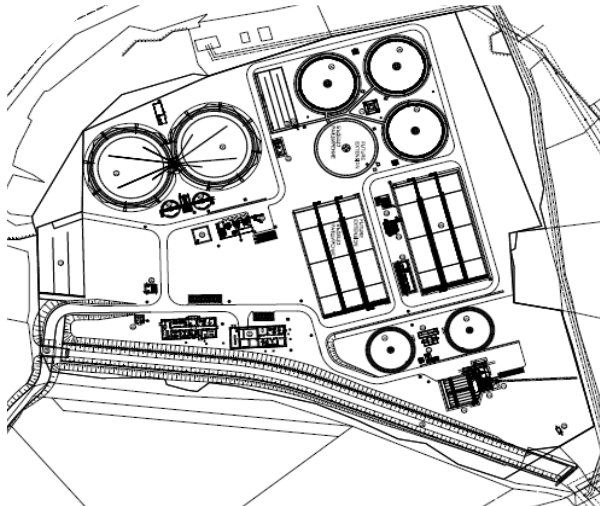


W A T E R

- ➔ Water Management
- ➔ Water Supply Systems
- ➔ Sewerage Systems and WWTP
- ➔ Flood Protection
- ➔ Solid Waste Management
- ➔ Environmental Impact Assessment
- ➔ Technical consultant

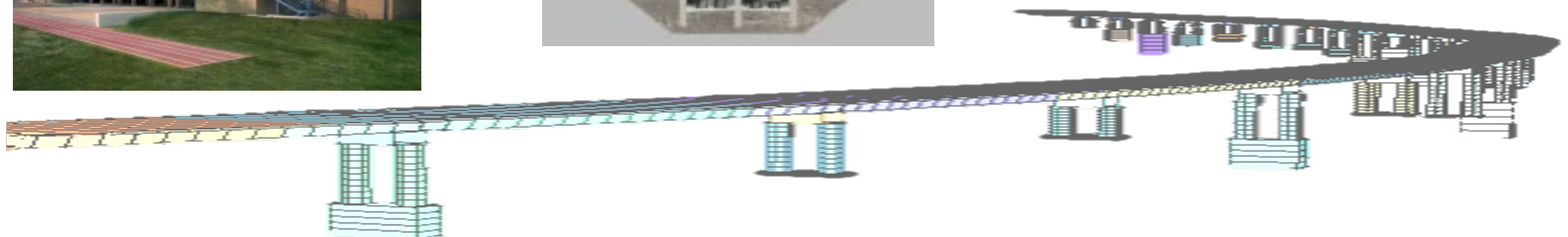
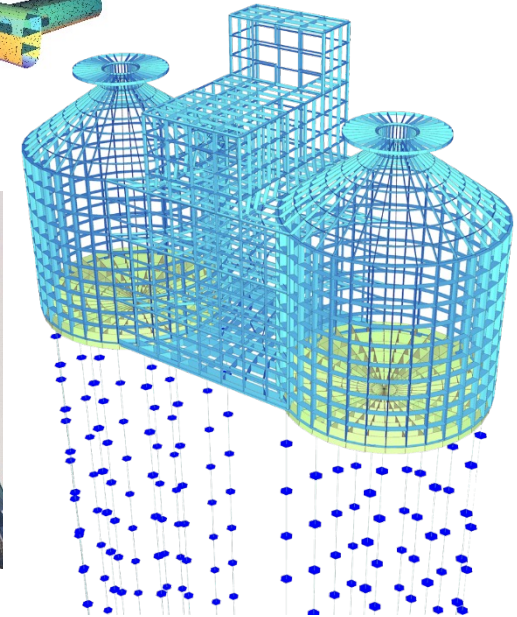
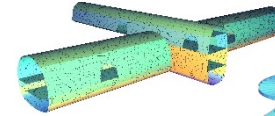
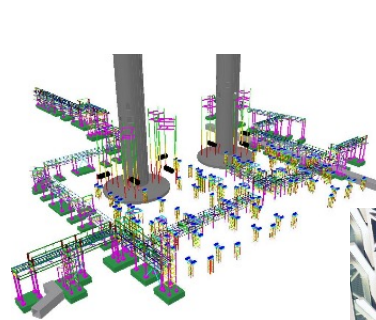
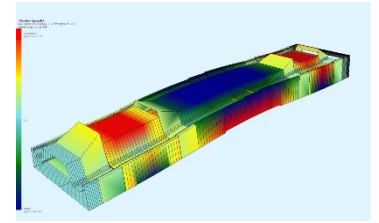
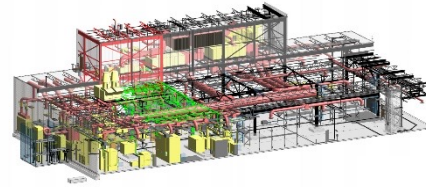


E N V I R O N M E N T



NAMA's structural department provides a wide range of consulting services including the following:

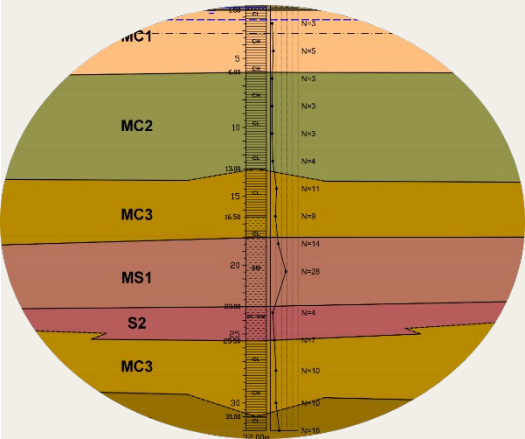
- ➔ Buildings
- ➔ Bridges
- ➔ Underground Structures
- ➔ Liquid Retaining Structures
- ➔ Foundations Earth Retaining Structures
- ➔ Steel Structures



GEOLOGICAL – GEOTECHNICAL

NAMA and NAMALAB provide a wide range of consulting services including the following:

- ➔ permission from the Central Laboratory of Public Works and accredited to ISO 17025 by the Greek Body of Accreditation (ESYD SA)
- ➔ investigation and evaluation of the geological and geotechnical conditions
- ➔ technical-geological investigations and designs
- ➔ hydrogeological investigations and designs
- ➔ geotechnical investigations and designs
- ➔ geo-environmental investigations and designs



Featured Projects

A comprehensive updated list of reference projects can be found at: <http://www.namanet.gr/>

Public Private Partnership for Waste Management, Serres, Greece



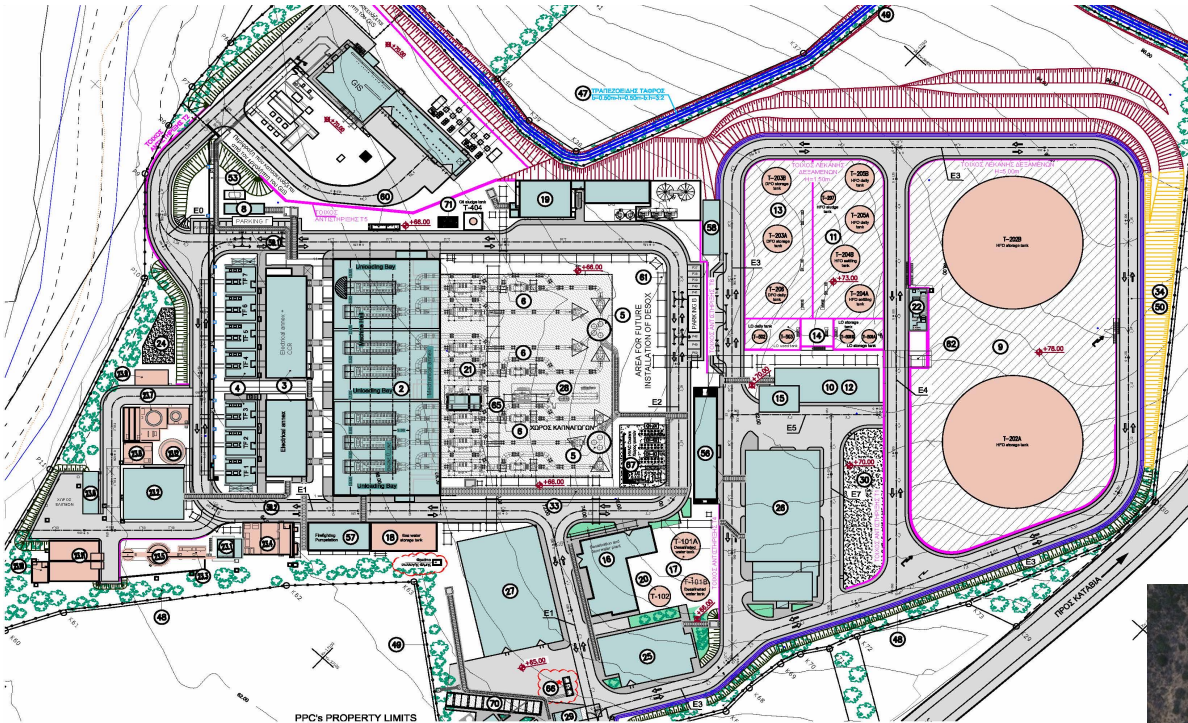
Provided Services:

Final design for Serres Waste Management Plant, 63.000 tn/y

- Architectural design;
- Structural design;
- Transport studies;
- Electro-mechanical design;
- Environmental Impact Assessment;
- Coordination of the construction phases.

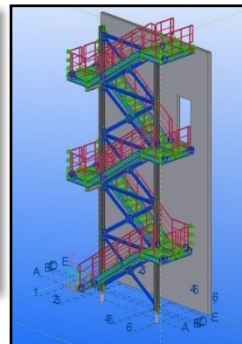
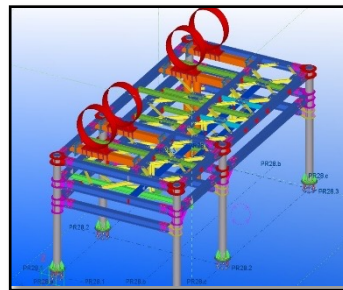
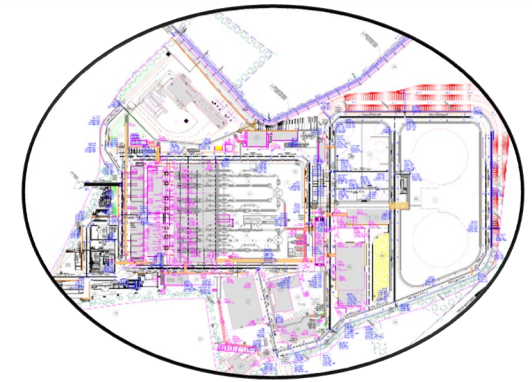


South Rhodes Power Station, Greece



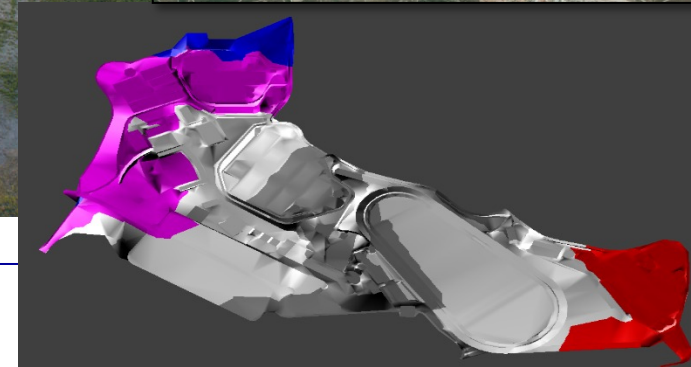
Provided Services:

- Final design – Implementation studies for the installation of the power plant (120MW)
- Structural design;
- Transport studies;
- Hydraulic studies;
- Studies of industrial and municipal waste treatment plants;
- Coordination of the construction phases.



5th Energy Station in Ptolemaida

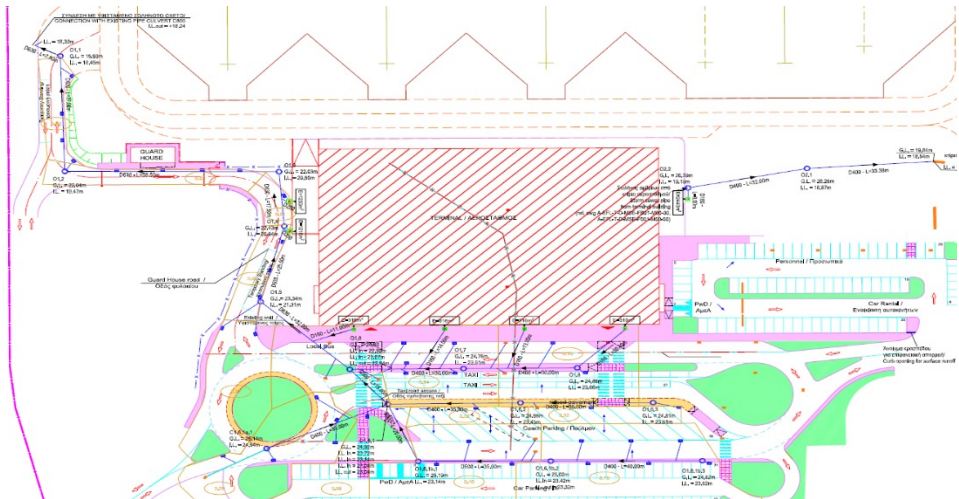
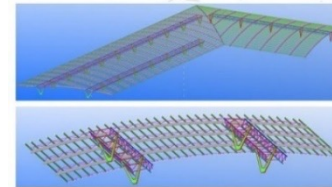
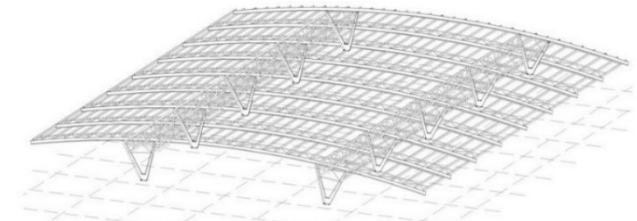
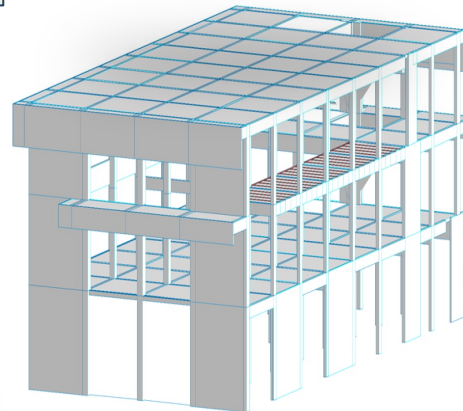
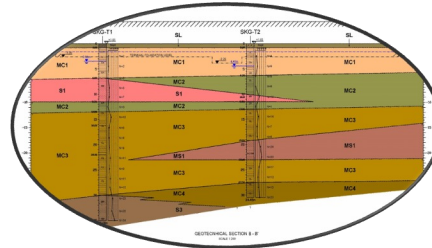
Construction of a Steam Unit of gross power 660MW



7 Greek Regional Airports of the Hellenic Republic Development Project

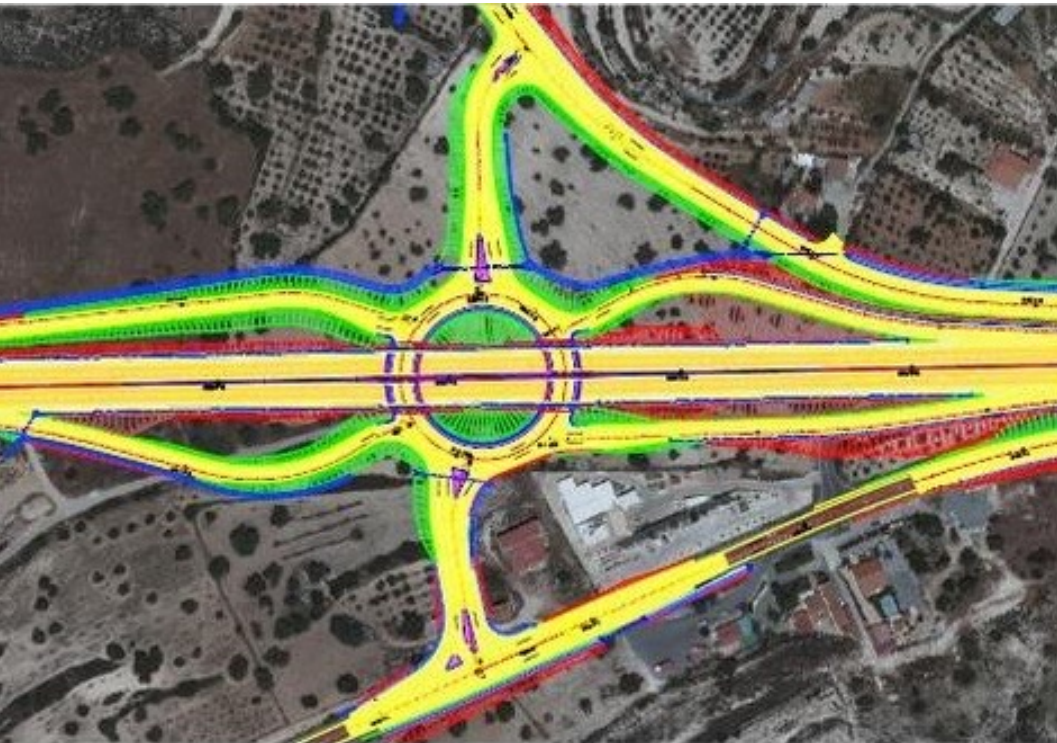
Provided Services:

- Conceptual, Detailed and Final design – Implementation studies for 7 airports (Thessaloniki, Kavala, Aktion, Corfu, Chania, Zakynthos and Kefalonia) and preparation of tender documents;
- Topographic studies;
- Structural design;
- Hydraulic and drainage studies;
- Geotechnical studies and investigations;
- Transport studies road design, parking management, pavement design;
- Studies of wastewater treatment plants;
- Environmental studies;
- Project management; Technical specifications preparation & BoQs and cost estimation.



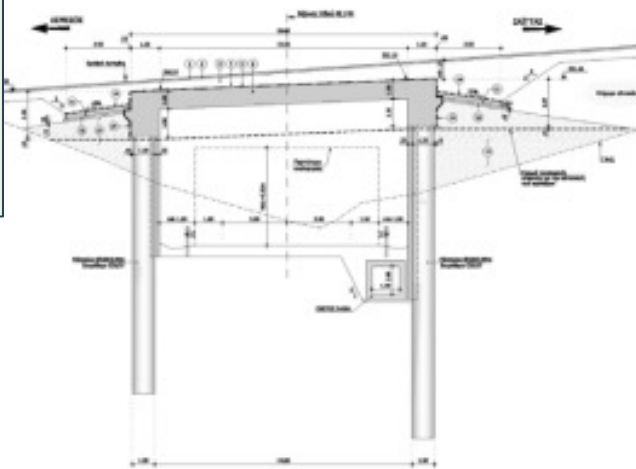


Limassol – Saittas Motorway (Cyprus)



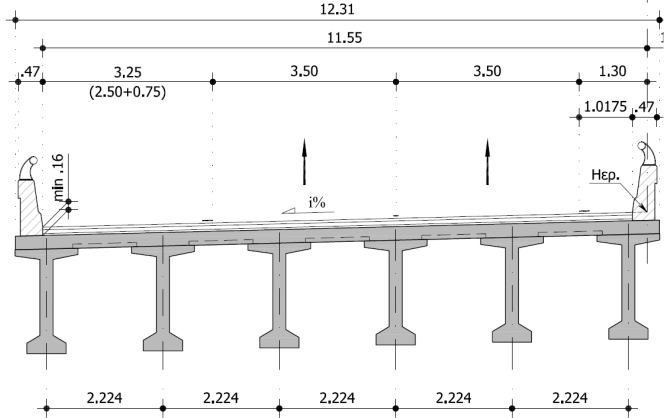
Provided Services:

- Final design – Implementation studies
- Highway Design;
- Structural Design – Foundations & Bridges



Underpass Bridge

Total length 56,65 m



Overpass River “Garili” Bridge

Total length 190,0 m



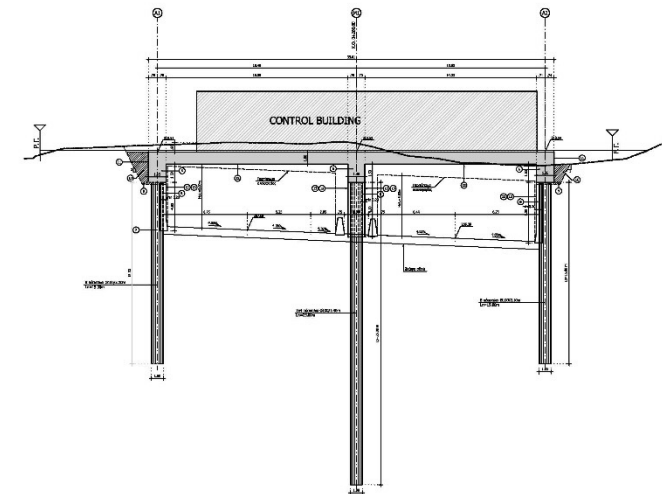


Final Design of Kymis Avenue (Athens, Greece) (Section I/C with National Road 1 to I/C with Attiki Odos Motorway)

estimated project budget: 350 million Euros

Final design of 3.5 km avenue length and 6.5 local roads, ~ 5 km tunnels, 5 bridges,
~2,5 km retaining walls and 2 buildings.

The final design and the preparation of tender documents include the following studies:
road, traffic, topographic, structural, geotechnical, geological, electromechanical,
environmental, drainage, architectural (buildings) studies



Sikeonas ByPass

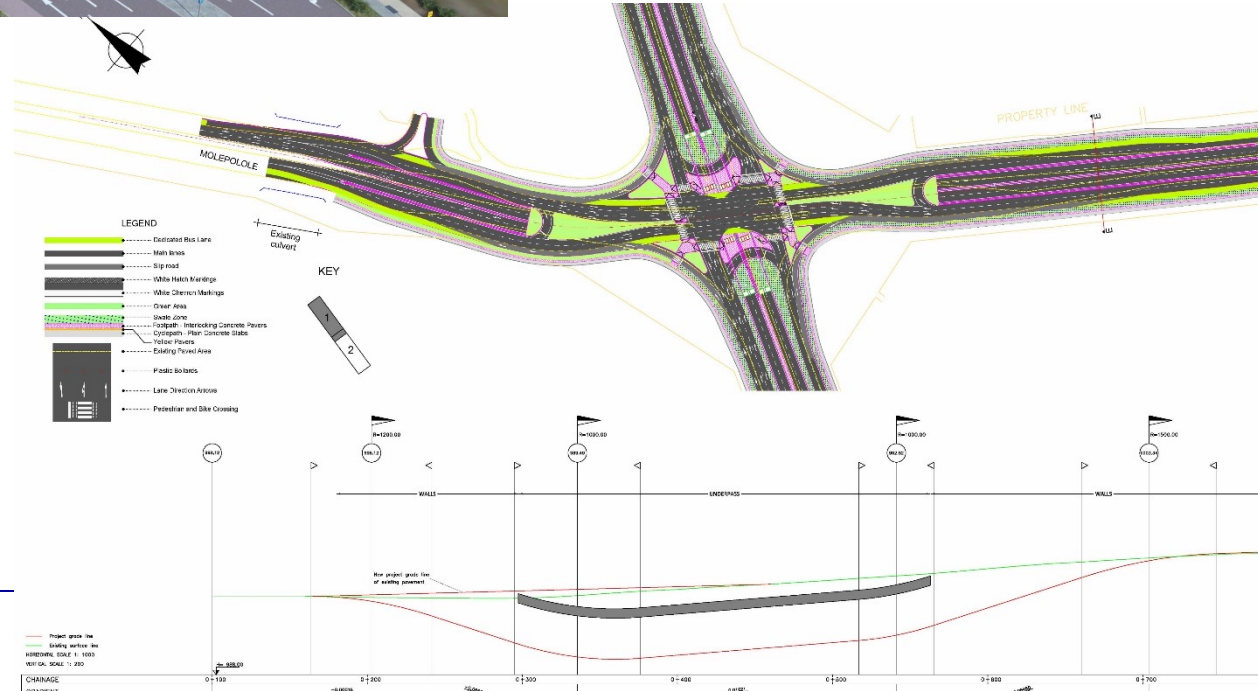
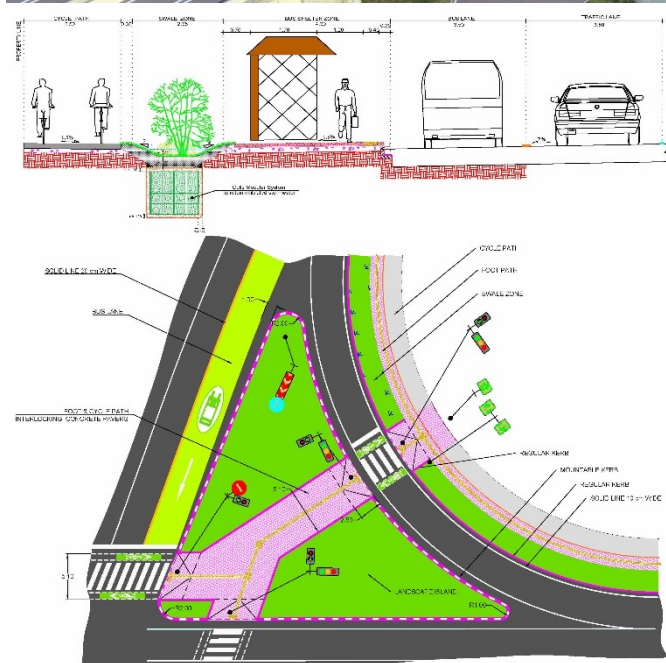
Road Length : 4 km Final Design

Provided Services:

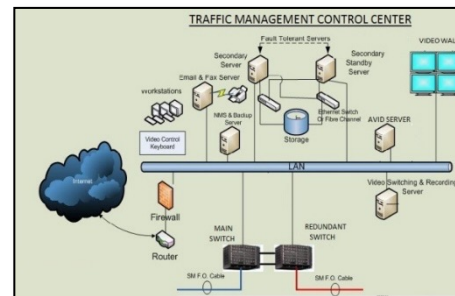
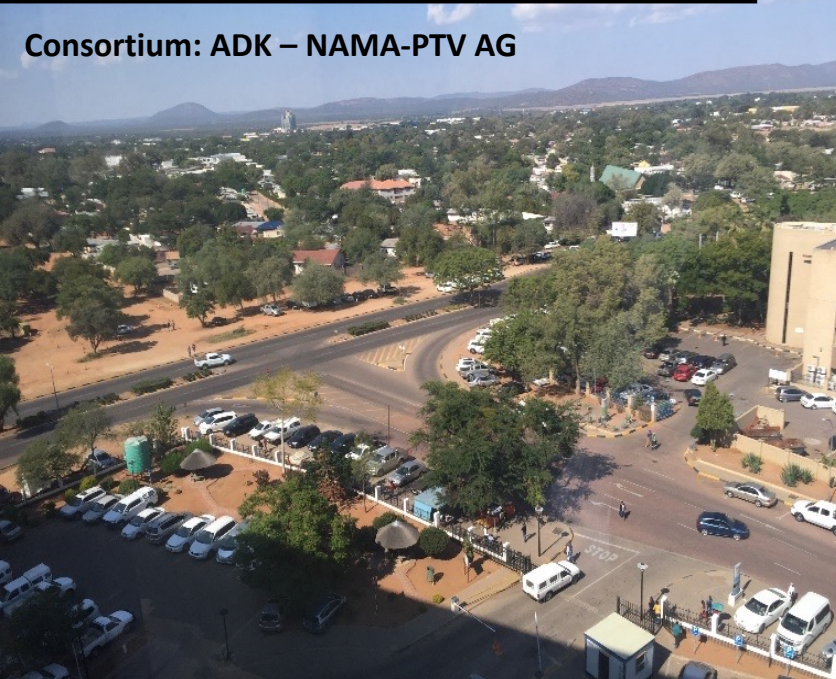
Road, Topography, Structural, Hydraulic, Geotechnical, Geological,
Signage and safety design, Electrical & Mechanical



An aerial view of a complex highway interchange. A multi-lane highway runs diagonally from the bottom left towards the top right. It features several overpasses and ramps that allow traffic to flow in different directions. The road surface is dark asphalt with white lane markings and arrows. The surrounding area includes green grass, some trees, and a large, colorful, abstract sculpture or structure in the background. The overall scene depicts a well-planned and modern transportation infrastructure.



Consultancy Services for the new Centralized Traffic Control (CTC) for Greater Gaborone City, Botswana



Stakeholders:

World Bank (Fund)

Ministry of Transport & Communications of Botswana (Owner)

Ministry of Environment, Wildlife & Tourism (Stakeholder)

Ministry of Finance and Development Planning (Stakeholder)

Gaborone City Council (Stakeholder)

Public



Technical Advisor for Athens Metro Projects

Three years contract for provision of Experts in the fields of Civil, Tunneling (TBM-EPB, NATM), E/M, Power Supply, Signalling (ATC, ATS), Ventilation. Telecoms, Construction Supervision, Testing & Commissioning, for all Athens Metro construction of extensions & design/tendering of new lines

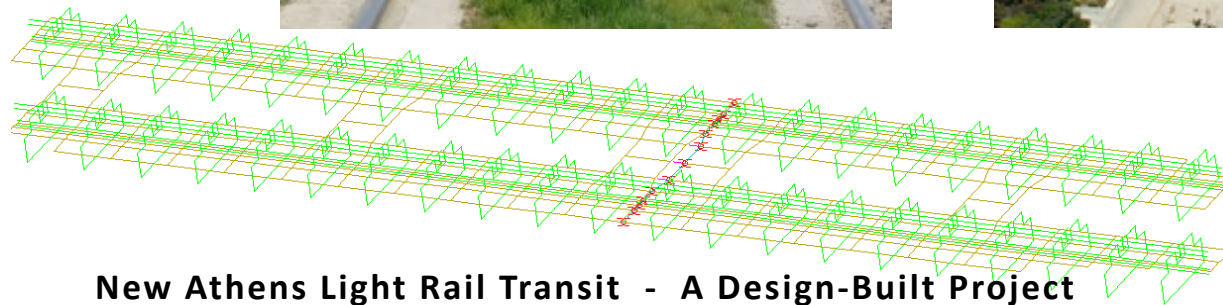




Athens Metro Line 1 – Upgrade & Renovation

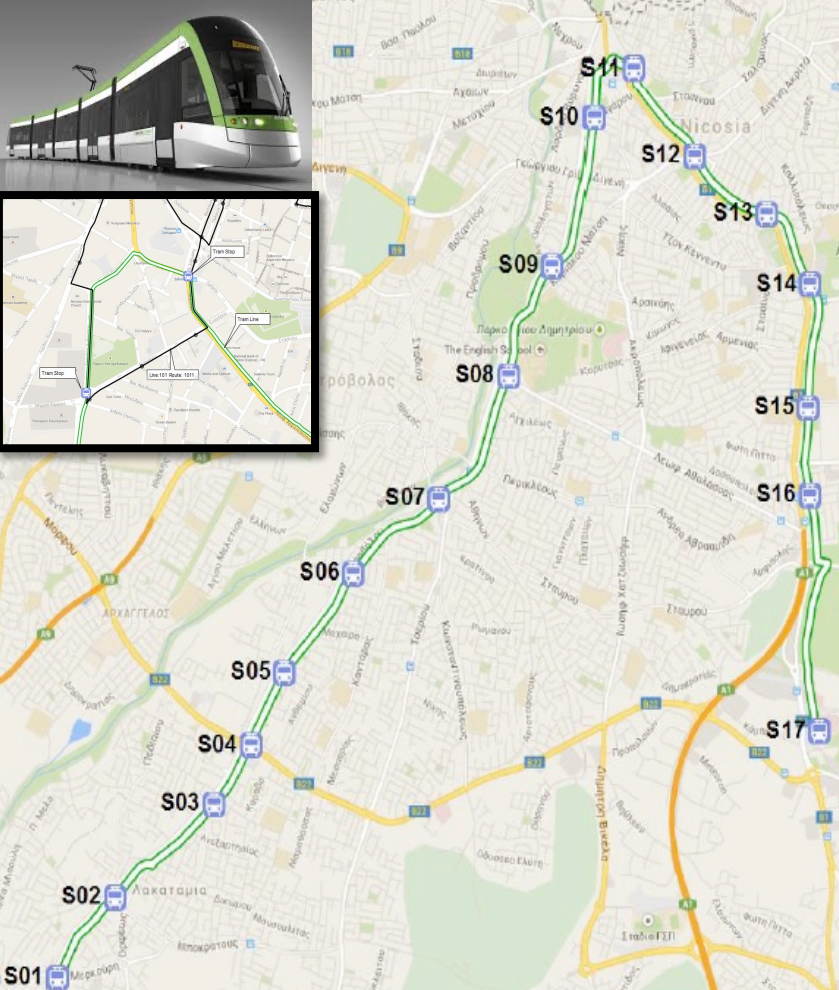
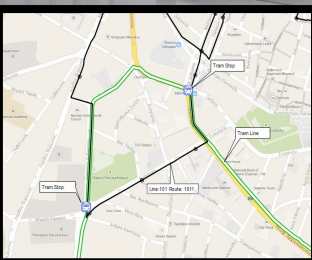
Budget of construction works: € 129.710.000

- Railway track substructure/ superstructure and tunnel strengthening at track section between Omonia and Monastiraki 23.3 km double railway line
- Structural Design of track slab on embankment and as a floating slab



New Athens Light Rail Transit - A Design-Built Project

Two lines of total length 26 km • 47 stations including terminal stations • Depot of total area 70.000 sqm • An extension for both lines of total 2 km length is added to the initial contract • Alignment that crosses urbanized (dense populated) areas and runs along the sea coast • Tendered construction (Transportation, Structural, Hydraulics, Geotechnical Services)



Feasibility Study for a Tramway System in Nicosia

Feasibility study of a network of tram routes to serve the greater urban area of Nicosia, Cyprus



Redevelopment of Panepistimiou Street and Tramway Extension with Related Traffic Measures in the Framework of Revitalizing the Center of Athens along the Axis of Panepistimiou Street (Re-think Athens)

The objective of the urban revival of the city center of Athens along Panepistimiou Avenue is to improve the quality of everyday life for the citizens by providing the conditions of environmental upgrade, estitution of the urban environment and improvement of the microclimate by planting trees, constructing shelters and prescribing the use of eco-friendly public means of transport which will reduce emissions and will create an inviting environment for both pedestrians and cyclists.



Othrys Tunnel

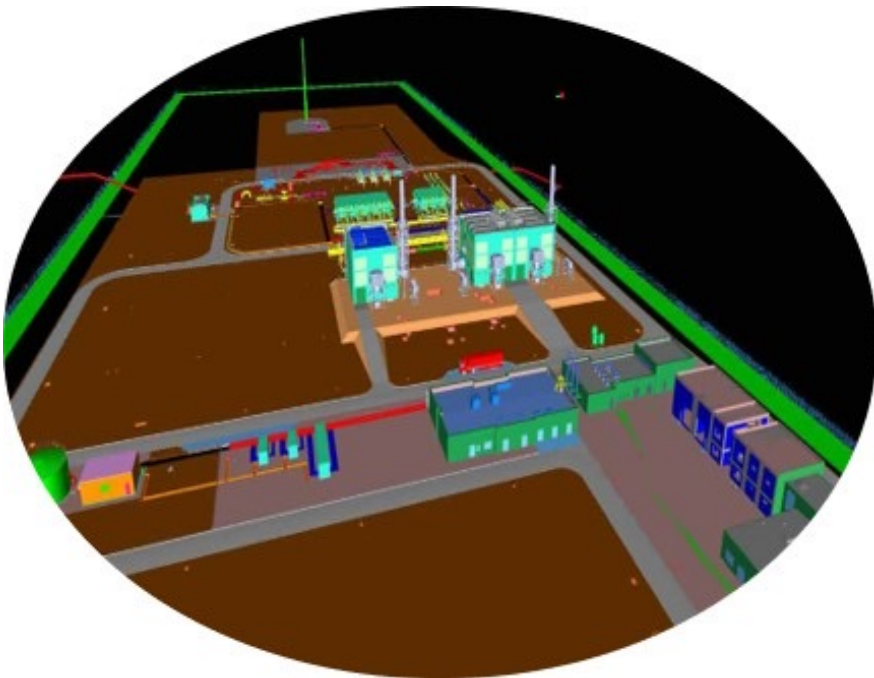


Double high speed railway line between Tithorea and Domokos

Completion works of infrastructure and building facilities and construction of superstructure of electromechanical facilities, signalling and telecommunications and electrification
107 km length of double track high speed railway, 4 Tunnels: 2x9,26 km (Kallidromo) and 2x7,05 km (Othrys), 23 Cut & Covers, 46 Railway Bridges, 27 Road over & under passes, 6 Railway Stations, 3 of them in operation, 1 Railway Stop

Trans Adriatic Pipeline (TAP) at Eastern Greece – Section II

Geotechnical investigations and studies

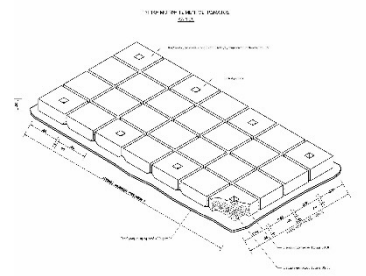


Stavros Niarchos Foundation Cultural Center

Quality Control Services/Geotechnical studies



Submarine pipe for the water supply of Aegina island



Hydraulic Design
Geotechnical Design and Investigations



The Project refers to the water, sewerage and WWTP infrastructure in 17 towns and includes:

- Water Supply systems detailed design and Tender Documents (FIDIC Red Book) for 6 towns,
- Detailed Design and Tender Documents (FIDIC Red Book) for sewerage & storm water networks in 3 towns,
- WWTP Conceptual Design and Tender Documents (FIDIC Yellow Book) for 6 towns,
- Feasibility Studies for WWTPs investments in 3 towns, including technical analysis, financial and economic analysis, Applications for EU funding.

Technical Assistance to support implementation of water and sanitation programme in Bosnia and Herzegovina

EuropeAid/132988/C/SER/BA

Client: European Union (Delegation of European Union to BiH)

J/V IGIP – Ingenieur-Gesellschaft für Internationale Planungsaufgaben mbH, Germany - NAMA Consulting Engineers and Planners S.A., Greece
- EXERGIA Energy and Environment Consultants S.A. Greece

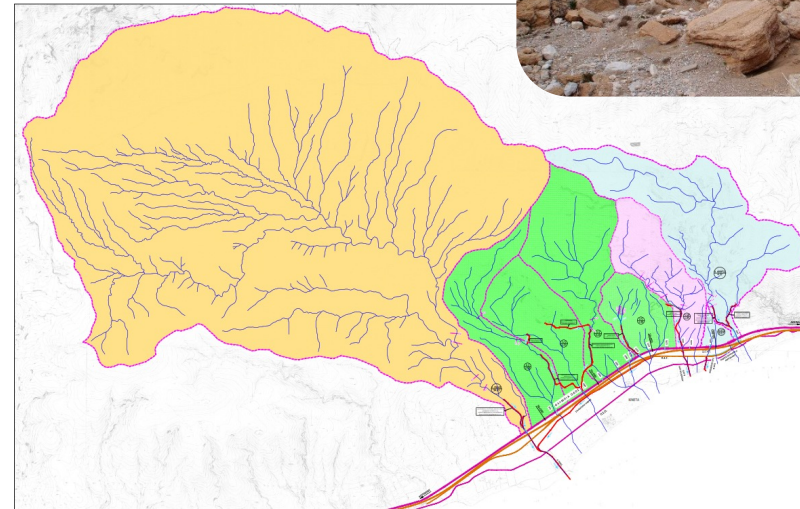
Sewage systems for Rafina

- Detailed Hydraulic design for sewage systems servicing 60.000 habitants
- 13km Main collectors
- 58km Sewage networks
- 5 pumping stations
- Tender Documents



Flood protection surveys & studies for Kineta region

- Hydraulic design for the preparation of flood lines and regulation works of streams
- Topographic surveys
- Geological surveys
- Geotechnical investigation and surveys
- Environmental Impact Assessment Study and preparation of relevant studies for the flood lines of the streams for the acquisition of environmental permits
- Tender Documents



River Basin Districts more than 50km²



Psyttalia - Athens Wastewater Treatment Plant

“Design and Construction of Phase B - Extension to biological treatment”

(3.500.000 P.E.)

Process and Detailed Engineering Design



Jebel Ali Sewage Treatment Plant

1.500.000 p.e.

Structural Design



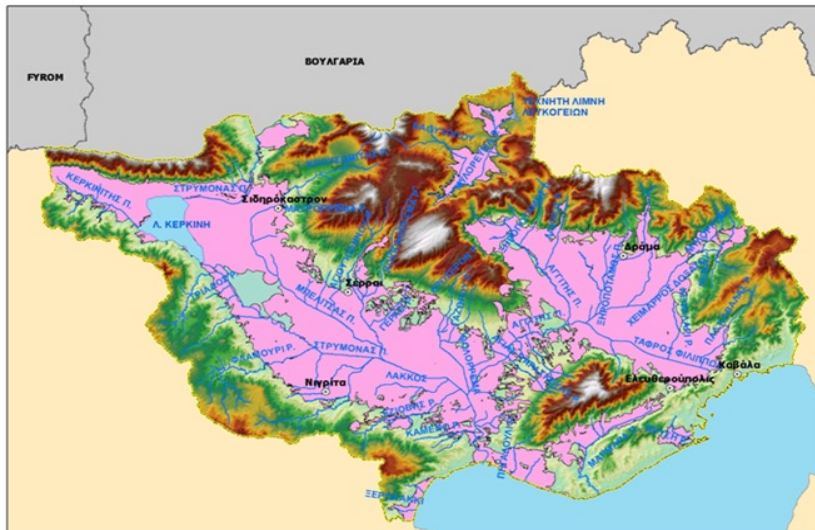
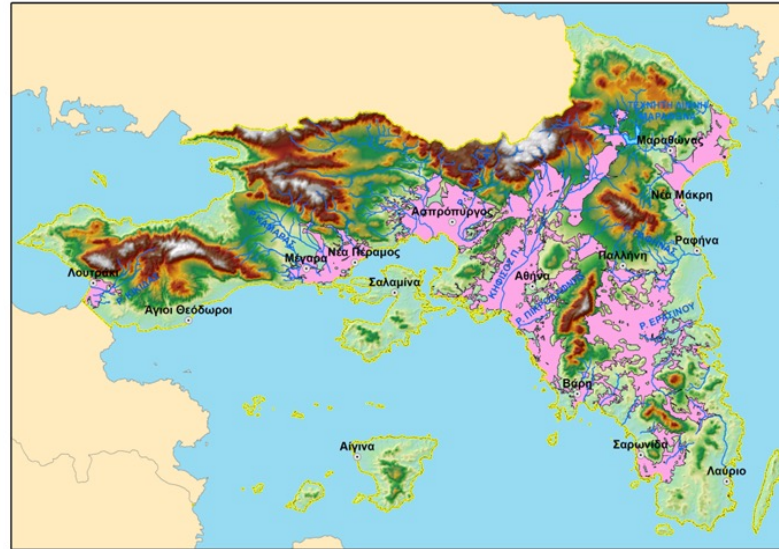
Wastewater Treatment Plant of Thessaloniki (1.300.000p.e.)

Process and Detailed Engineering Design, Supervision during construction



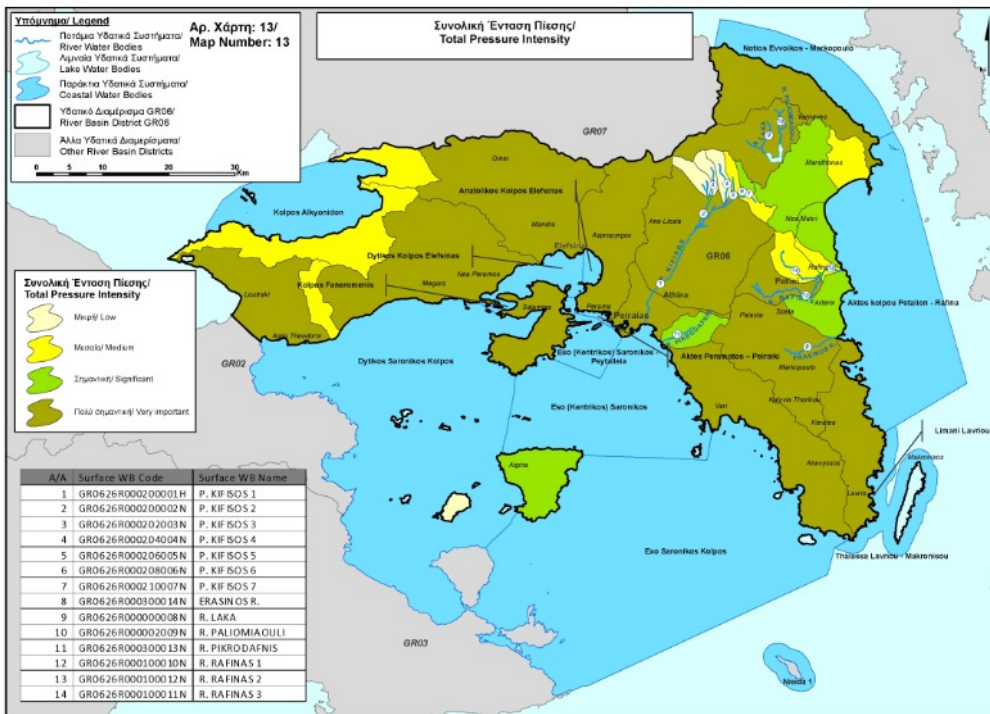
Preparation of Flood Risk Management Plans for 5 out of 14 River Basin Districts of Greece according to 2007/60/EU Directive

- ✓ Preparation of flood hazard and flood risk maps for various hydrological scenarios
- ✓ Preparation of Flood Risk Management Plans
- ✓ Preparation of Strategic Environmental Assessments (SEA)
- ✓ Public information and consultation

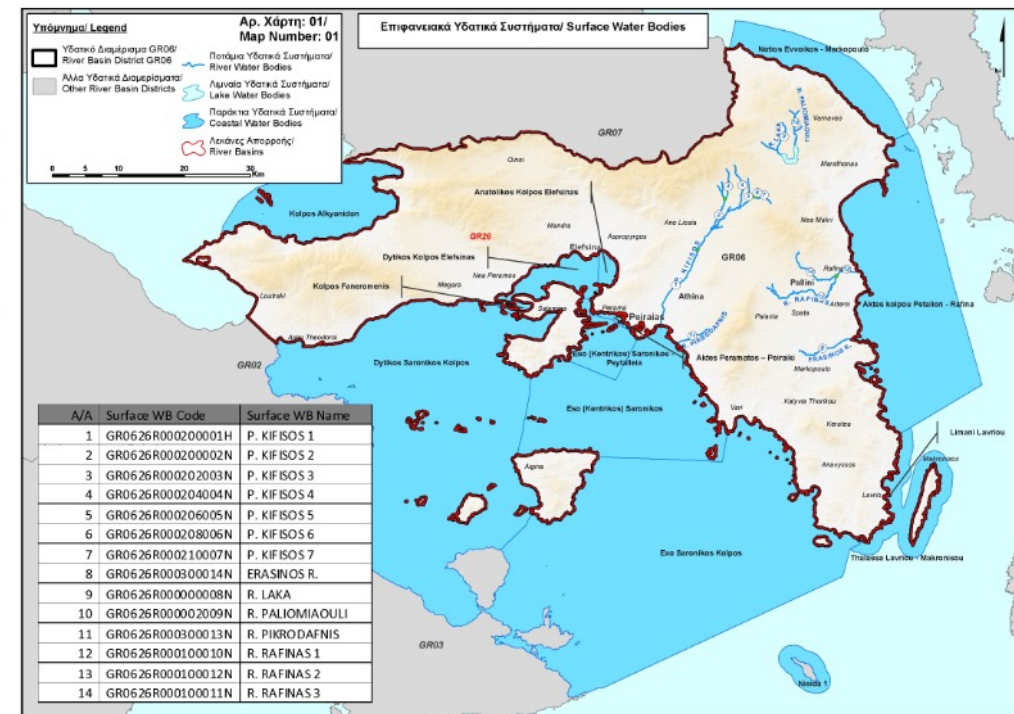


- ❑ Total population: ~ 5.650.000 inhabitants
- ❑ Total covered area: 43.200km²

Preparation of River Basin Management Plans for the River Basin Districts of Attica and Eastern Sterea Ellada, according to the 2000/60/EU Directive



- ❑ Total population: ~ 4.500.000 inhabitants
- ❑ Total covered area: 15.500 km²



- ✓ Preparation of River Basin Management Plans
- ✓ Preparation of a draught and water scarcity management plan
- ✓ Strategic Environmental Assessment (SEA)
- ✓ Public Consultation
- ✓ Capacity building

Consultancy and Supervision Services for the “Sewerage Project of Eastern and Western Section of Thriassion Pedion”

The services provided under this contract were:

- ✓ Review and update of the existing designs as defined by the Cohesion Fund
- ✓ Preparation of technical specifications, design drawings, Bills of Quantities & Tender Documents for the works' procurement
- ✓ Construction supervision
- ✓ Project Management Support

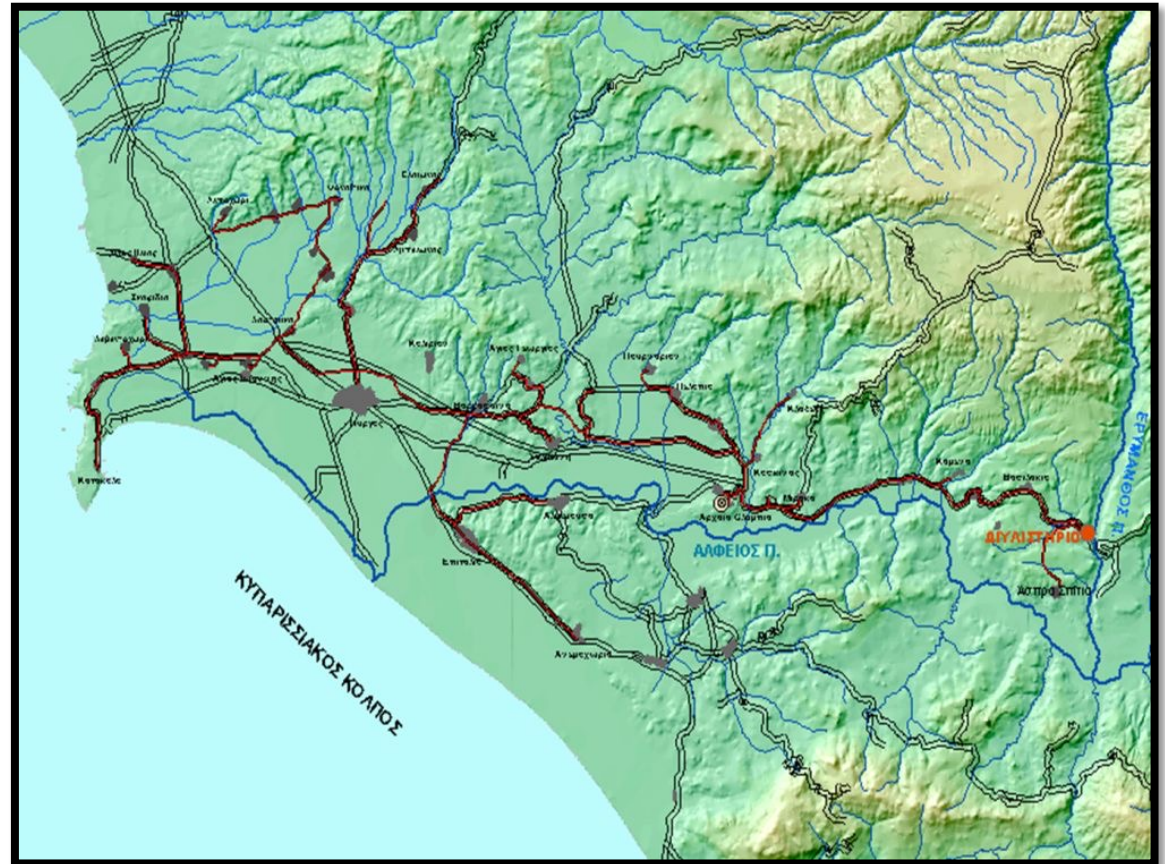
Project's data:

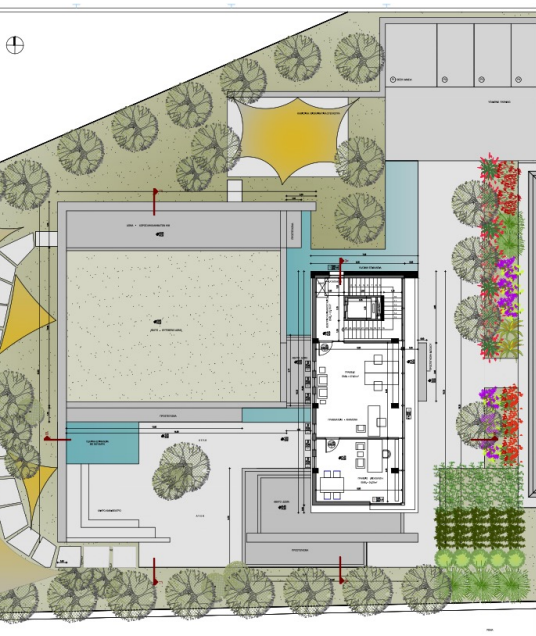
- total population: 61.500 inhabitants
- ~200 km sewerage network
- 5.483 chambers & 1 pumping station



Water supply system for 62 Communities of Ilias Prefecture from Erymanthos River – Greece

- ✓ Preliminary Design, Detailed Design and Tender Documents preparation for **water supply network**
 - total length of water supply network: 215.000m
 - maximum transmission capacity 59,500 m³/day
- ✓ Preliminary Design, Detailed Design and Tender Documents preparation for the **Water Treatment Plant** with a treatment capacity of 51.600 m³/day (34.000 m³/day for phase A)





Waste Water Treatment Plant of Foinika, Syros island

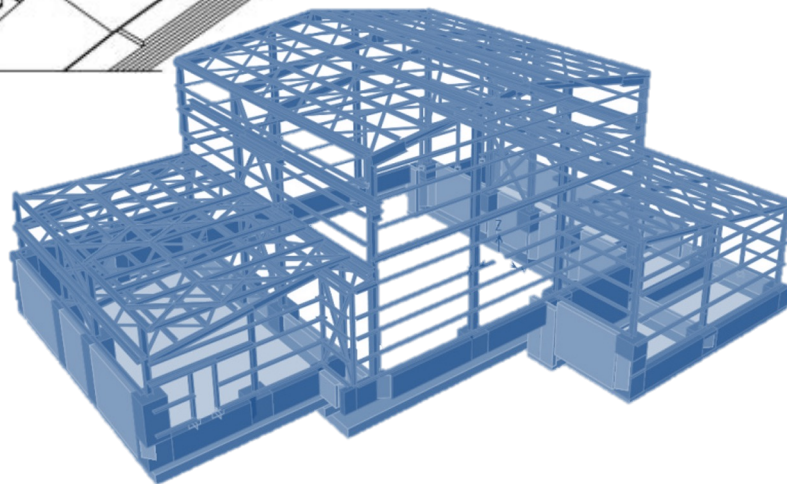
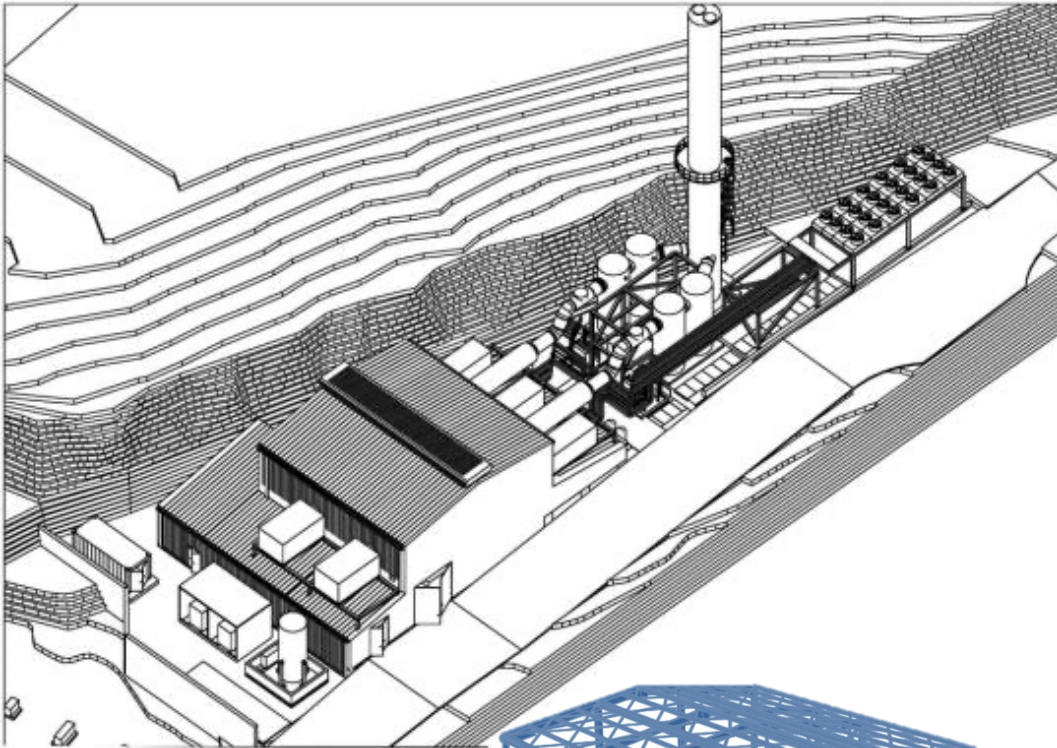


Waste Water Treatment Plant of Alogomandra, Mykonos island



Submarine pipe for treated wastewater disposal





**Combined heat and power station 15.5 MW
at Revithousa Island
(Saronic Gulf – Attika, Greece)**



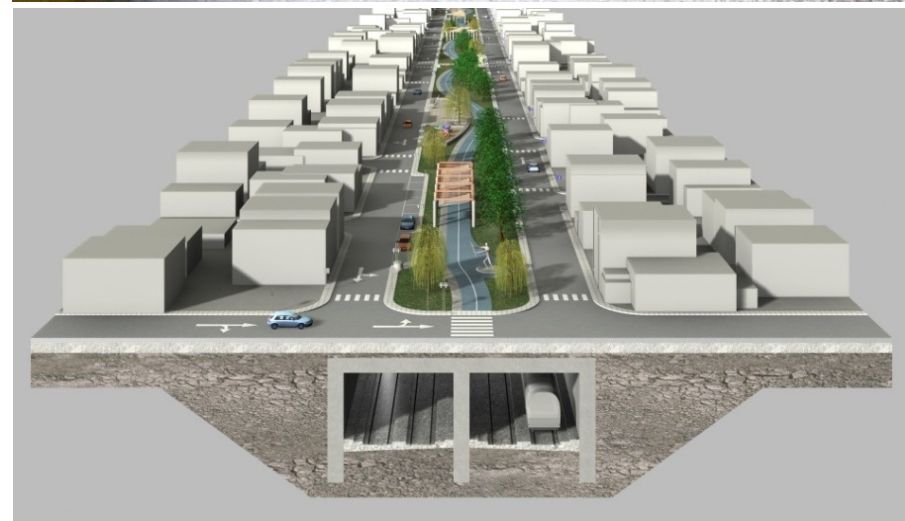
Structural Design



New Athens Suburban Railway

Tres Gefyres–Acharnon Railway Complex Railway

4,8 km quadruplex railway. Transportation, Structural, Hydraulics, Geotechnical Services



New Athens Suburban Railway

Cut & Cover Ag. Anargiroi (Total length 1872m)



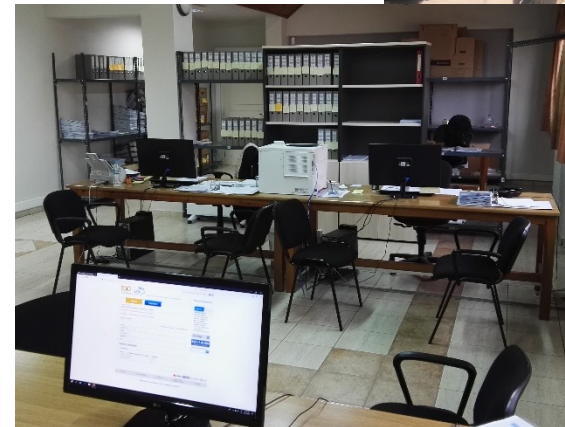
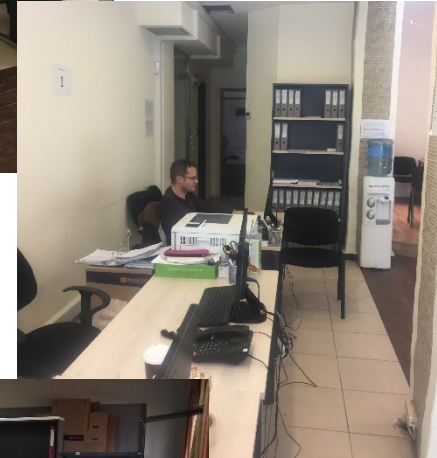
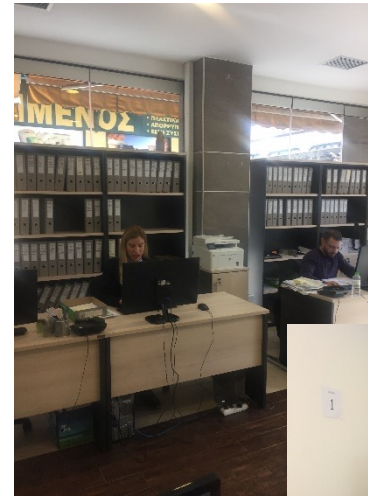
ATHENS 2004



Olympic Equestrian Center and New Horse Racetrack of Athens

The study concerns the construction of a complex project, which covers the needs of the Olympic Games (Olympic Equestrian Centre) and the needs of the New Horse Racetrack of Athens. It is developed in an area of 2,150 hec and it is designed to serve 17,250 persons (visitors and permanent staff) and 2,328 horses. Roadworks, Urban road network of 13 km length and horse-roads of 5km length, Parking area of 162,000 sqm, Signage study, Tracing of the horse racetrack of a length 2.7 km Water Supply Network, Irrigation and Fire Extinguisher Network. Sewerage, Wastewater collection transmission treatment and disposal works. Wastewater Treatment Plant comprising preliminary treatment biological treatment. Storm water management system. Drainage systems for a total area of 250,000 m².

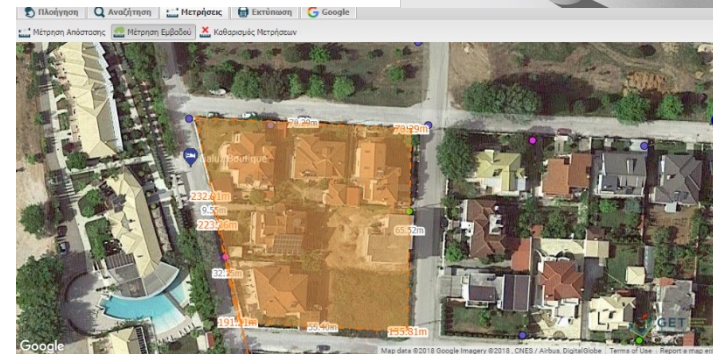
Implementation of Hellenic Cadastre studies and Support Services



Cadastral survey and the provision of Support Services for the creation of the Hellenic Cadastre for the:

- Regional Unit of Karditsa, Region of Thessaly.
- Municipalities of Aigio and Erineio and the communities of Agiou Konstantinou, Valimitikon, Dimitropoulou, Digeliotikon, Koulouras, Loggou, Rododafnis, Selianitikon, Selinounots and Temenis in the Regional Unit of Achaia, Region of Western Greece.
- remaining areas of the Regional Unit of Ithaca, Kefallinia and Zakynthos, Region of Ionian Islands.
- remaining areas of the Regional Unit of Achaia, Region of Western Greece.
- remaining areas of the Regional Unit of Korinthia and Argolida, Region of Peloponnesse.

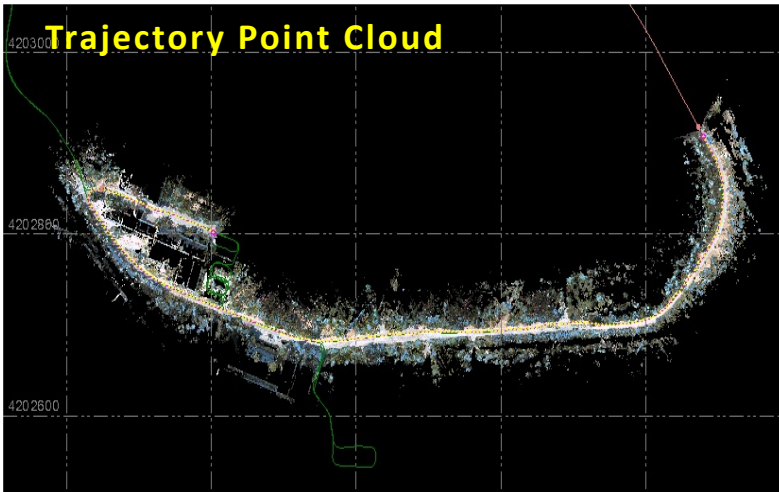
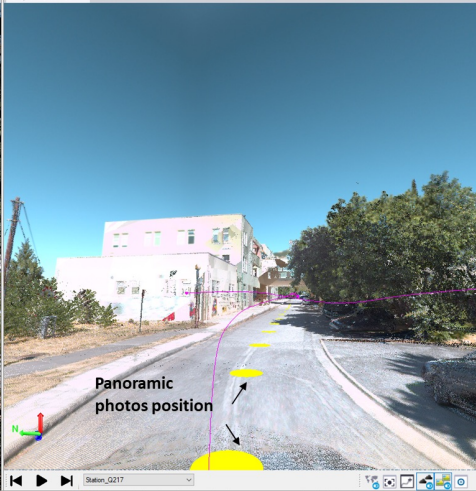
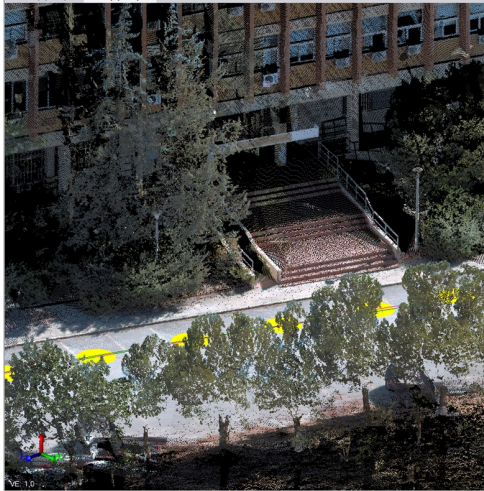
Upgrade of the National and Regional street lighting at Epirus Region, Greece



NAMA has successfully completed the project of surveying and recording of the street lighting network and equipment at an electronic registry (GIS), assessing current situation and proposing interventions concerning the National and Regional street lighting network of Epirus Region (total length 2.500km) at the context of Smart Cities solutions. An open-source Web-GIS application has been created for the visualization of the project, giving the user the ability to view the aggregated information of the collected points.

The project is completed in the context of Smart Cities solutions.

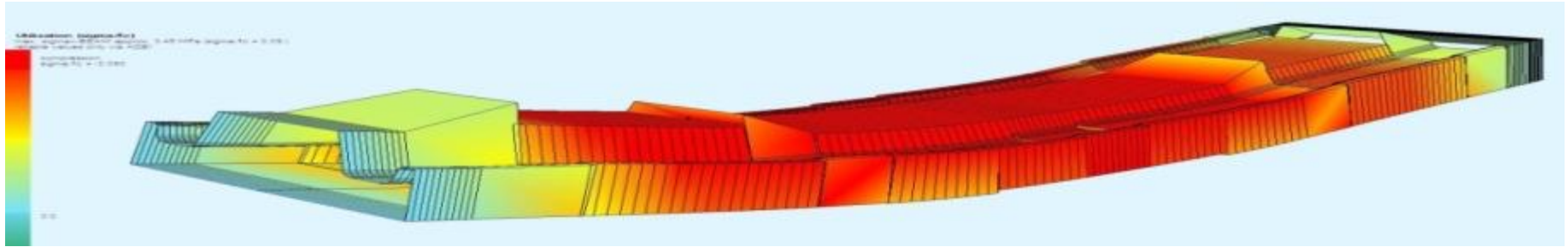
Mobile Mapping Services for the road network of the Prefecture of Attica



ASSET MANAGEMENT

Categories for feature extraction

- Road assets & condition
- Buildings (edges, footprints, façades, roofs, etc.)
- Poles (in general man-made pole-like objects)
- Trees/ vegetations
- Street lights
- Road Sign and Traffic Sign
- Road Curb/ Pavements
- Bus Lanes & land marking
- Rail Tracks
- Bus stops
- Kiosks, other city furniture
- ...



Structural design and development of a new sleeper for the Indian Rail Network

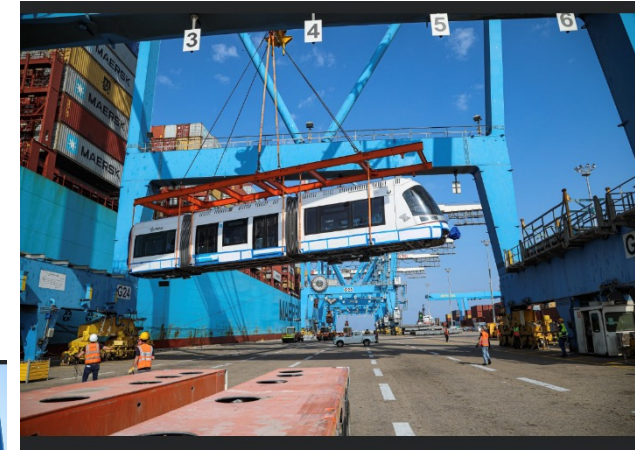
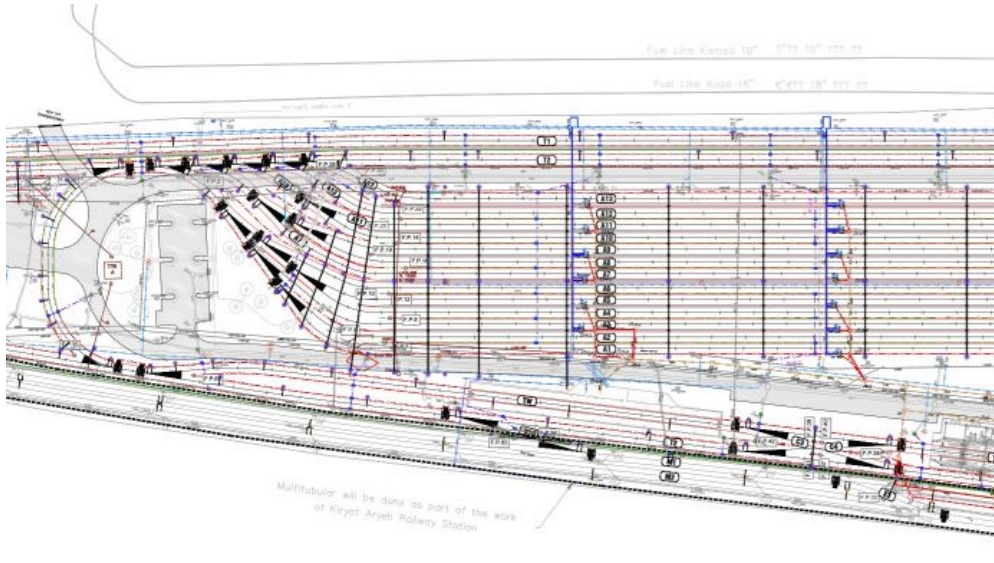


Design services for India railway system

RAILONE/ CARILLION - ARCADIS/ NETWORK RAIL



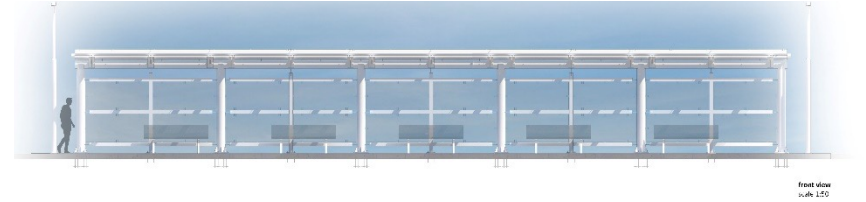
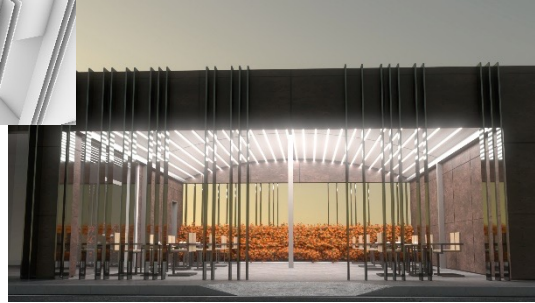
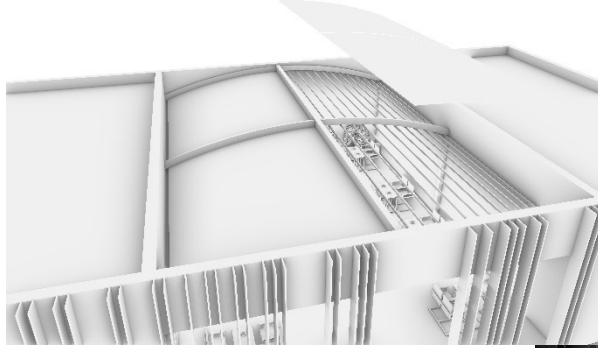
TECHNICAL CONSULTANT SERVICES FOR NEW LRT SYSTEM of Tel Aviv, Israel



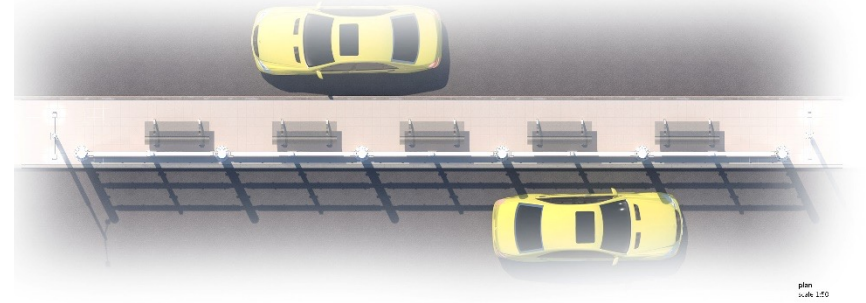
The project includes the Red Line trackwork and the Kiryat Aryeh Depot. NAMA completes design checking services for systems of the project including:

- Power distribution, traction power and OCS
- Track and alignment of the LRT line
- Signaling and train control
- Communications
- Fix mechanical and electrical system
- Traffic priority control system
- Smoke and fire detection system, fire suppression system
- IT infrastructure and systems for the operation of the control centre (SCADA and video walls)

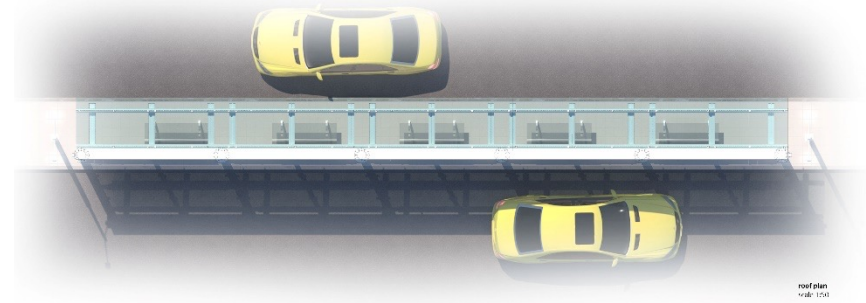
NEW TAXI STAGING AREA for Athens International Airport S.A.



front view
scale 1:50



plan
scale 1:50



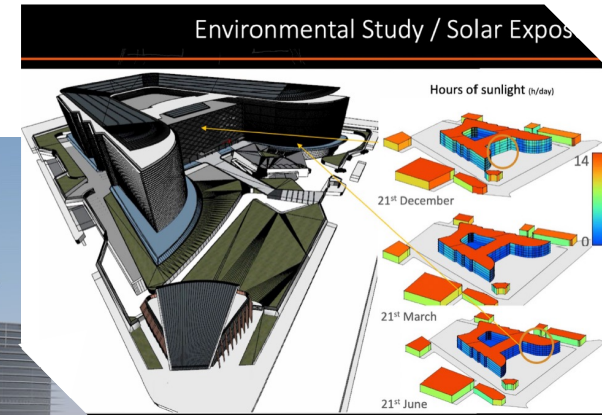
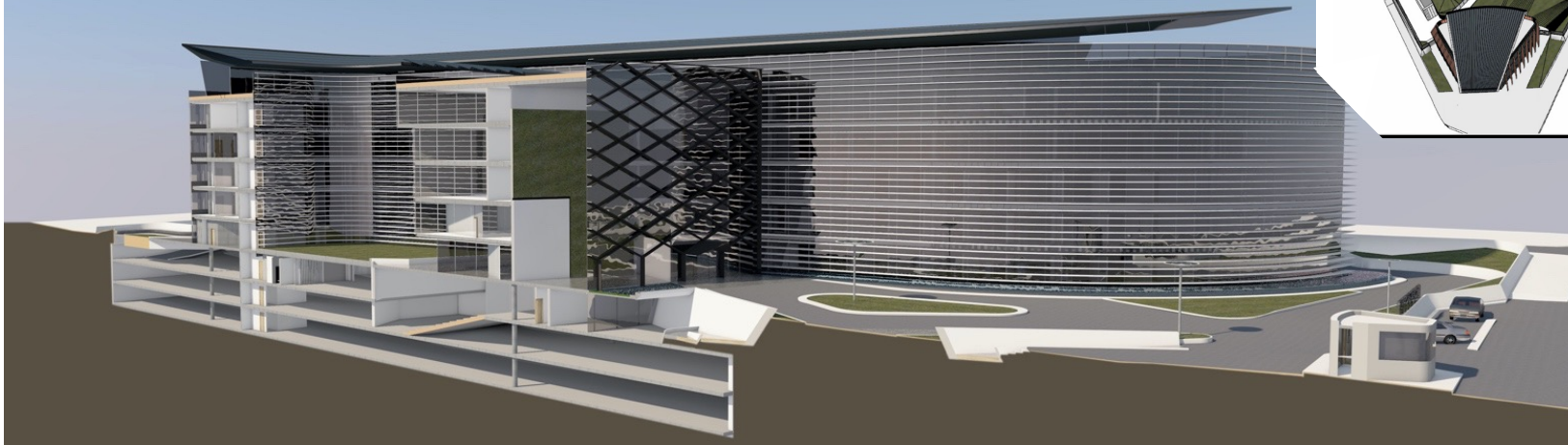
roof plan
scale 1:50

New administrative building complex of the Hellenic Public Power Corporation



Together with architectural and MEP partners, we execute the following:

- Architectural design
- Structural design
- MEP design
- BIM design



Development of Metropolitan Pole of Hellinikon – Ag. Kosmas Coastal Front Condos

Together with other partners, we execute the following:

- Topographic surveying
- Architectural design and design of the surrounding area
- Structural design
- MEP design
- BIM Execution plan and BIM design





Contact Information:


32, Perrikou street, 115 24 Athens,
Greece,

☎: (+30210) 6974 600,

☎: (+30210) 6983 657,

E-mail: nama@namanet.gr

URL: www.namanet.gr

: NAMA Consulting Engineers and Planners SA