



# Company Profile



## Address and Contact Details

**Name:** NAMA Consulting Engineers and Planners S.A.  
**Address:** 32, Perrikou Str., 115 24 Athens, Greece  
**Tel.:** (30) 210 69 74 600  
**Fax:** (30) 210 69 83 657  
**E-mail:** [nama@namanet.gr](mailto:nama@namanet.gr)  
**Web site:** [www.namanet.gr](http://www.namanet.gr)

## Legal Status

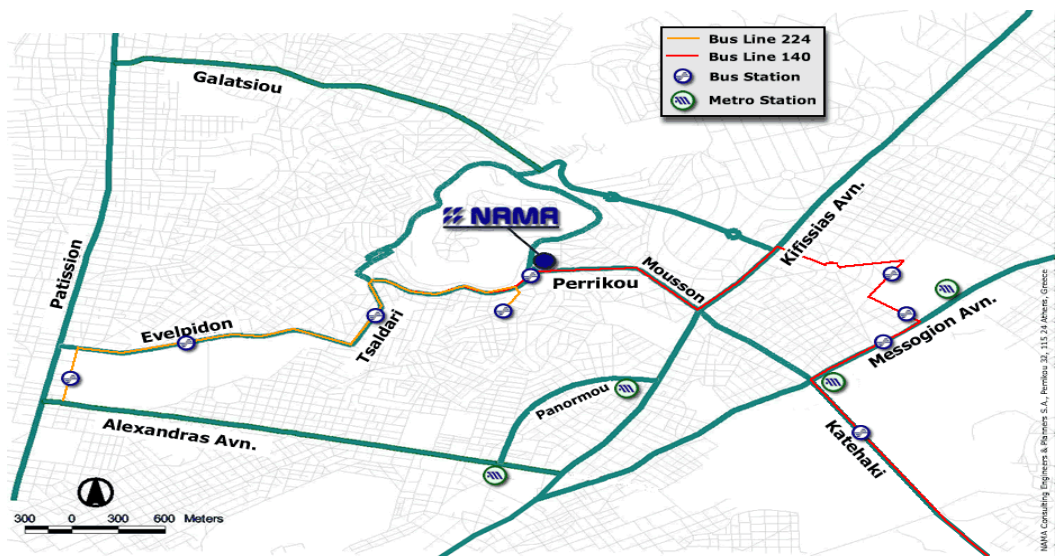
**Year of foundation:** 1990  
**Location:** Athens  
**Legal status:** Shareholding Company



NAMA's Office Building



Inside NAMA's Office Building

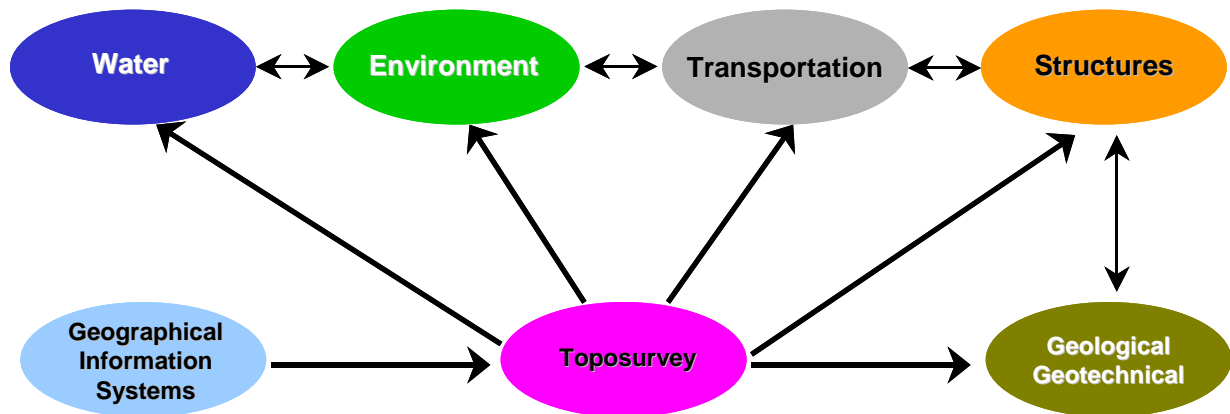


Main Access Roads to NAMA

### Mission Statement

- **to offer independent consulting services.**
- **to provide outstanding planning and consultancy services to our clients (public, private and municipal companies and organisations).**
- **to assist our clients in achieving their goals in close co-operation with them.**
- **to be recognised as one of the leading companies in the consultancy services in the sectors of Water & Environment, Transportation Design and Structural Design.**
- **to offer opportunities for professional development to our staff**

## Main Fields of Activity



## Surveying, Mapping and Scanning Services

Toposurveys – Cadastral – Photogrammetric mapping – Digital terrain models – Digitising and scanning services - GIS.

## Water and Environment

Water resources planning and development – Water supply and treatment – Sewage collection and stormwater management – Treatment and disposal of wastewater and sludge – Irrigation and flood control – Environmental impact assessment – Solid waste management – Industrial wastewater – Marine and Aquatic Environment – Integrated Environmental Planning

## Highways and Transportation

Transport engineering and operations – Highway planning and design – Traffic design – Traffic lights design – Toll Collection systems – Railway planning and design – Airports – Road safety planning – Preparation of Procurement, Specifications and Guidelines – Feasibility studies – Consulting services for highways contractors.

## Structural Design

Buildings – Road Bridges – Pedestrian Bridges – Culverts – Underground structures – Cut and Cover Tunnels – Earth Retaining structures – Liquid retaining structures – Steel structures – Construction monitoring – Preparation of Procurement, Specifications and Guidelines – Consulting services.

## Geological – Geotechnical Design

Technical-geological design – Hydro geological design – Geophysical design – Sampling boreholes – Laboratory tests – Evaluation of Geotechnical data – Slope stability design – Design of retaining structures – design of buildings foundation – Soil improvement design

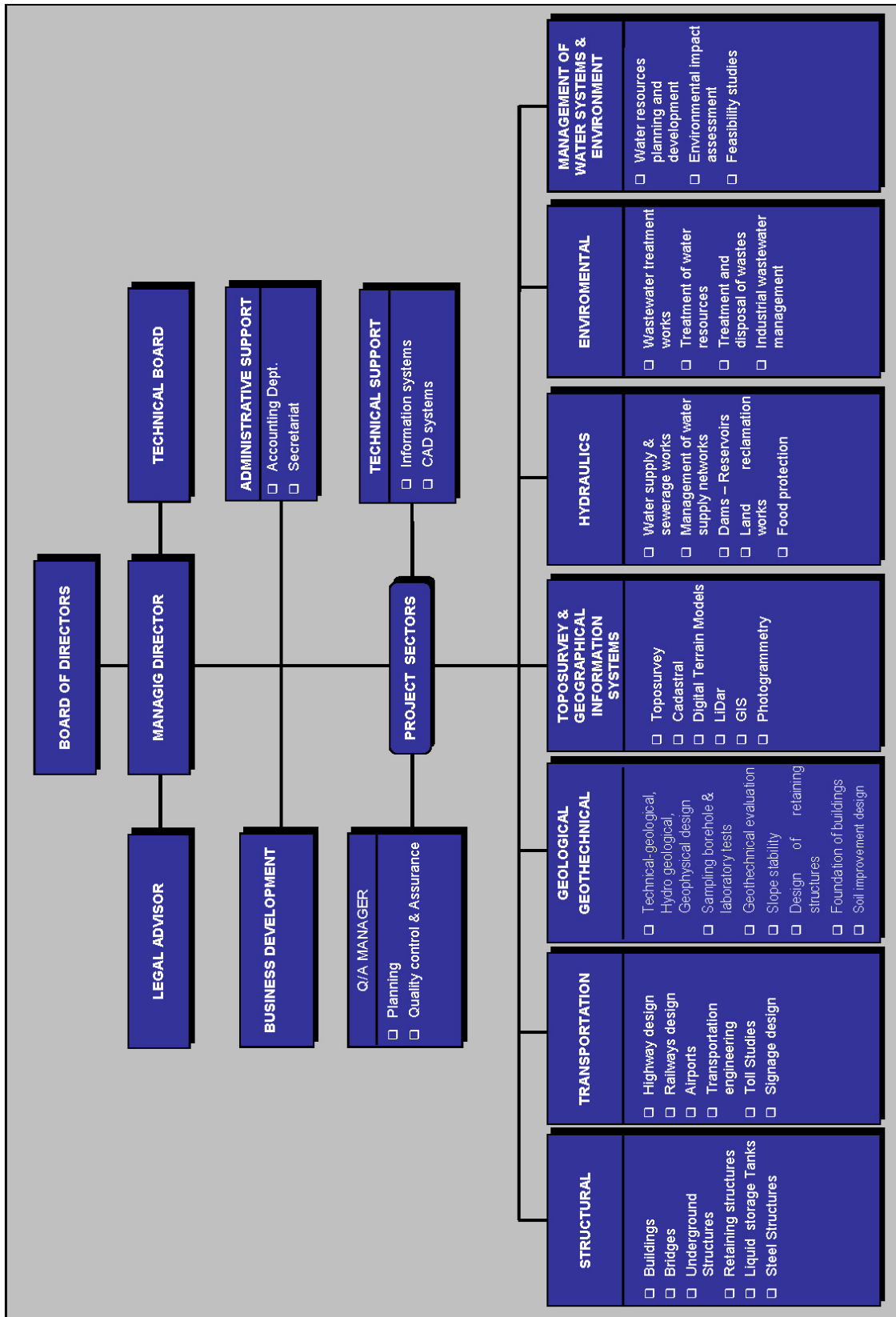
### Services Provided

- Strategic planning
- Value Engineering
- Investment programmes
- Feasibility studies
- Environmental audits and impact studies
- Cost - benefit analysis
- Conceptual design
- Detailed engineering studies
- Tender preparation and evaluation
- Project management and administration
- Project and programme appraisal and evaluation
- Design and construction supervision
- Field surveys (flow metering, data capture, topography, soil and groundwater)
- Operation consultancy
- Staff training
- Research programmes
- Digital mapping and GIS applications
- Modeling and simulation
- Guidelines, specifications and institutional aspects

### Major Clients

- European Commission (DG I, XII, XIII, XVI, Cohesion Fund)
- Ministry of the Environment, Physical Planning and Public Works
- Ministry of National Economy
- Ministry of Interior Affairs
- Union of Water Supply & Sewerage Enterprises
- EYDAP (Water Supply & Sewerage Organisation of Athens)
- EYATH (Water Supply & Sewerage Organisation of Thessaloniki)
- Water Supply & Sewerage Enterprises of Larissa, Thiva, Ioannina, Chalkida, Volos, Lamia, Corinthos, Corfu, Chania, Rethymno, Mytilini, Kavala, Heraklion etc.
- Union of Attica Communities and Municipalities (ESKDNA)
- Union of Piraeus and Western Attica Municipalities
- Various Institutions, Local & Regional Development Organisations, Municipalities and Communities
- Regional development of PELOPONISOS
- Regional development of CRETA
- ATTIKO METRO S.A.
- ATHENS INTERNATIONAL AIRPORT
- EYDE/PATHE
- EGNATIA ODOS S.A.
- KTIMATOLOGIO S.A. (Greek Cadastral Company)
- O.S.E. / ERGOSE S.A. (Greek Railway Organization)
- TRAM S.A.
- HELLENIC PETROLEUM - Aspropyrgos Refineries
- Contractors: ATHINA S.A., AVAX S.A., DOMOSTATIKI S.A., ELLINIKI TECHNODOMIKI S.A., EFKLIDIS S.A., GEK S.A., HOCHTIEF, J.V. OLYMPIACO METRO, PANTECHNIKI S.A., TEV S.A., THEMELIODOMI S.A. IMPREGILO etc.

Organisation Chart

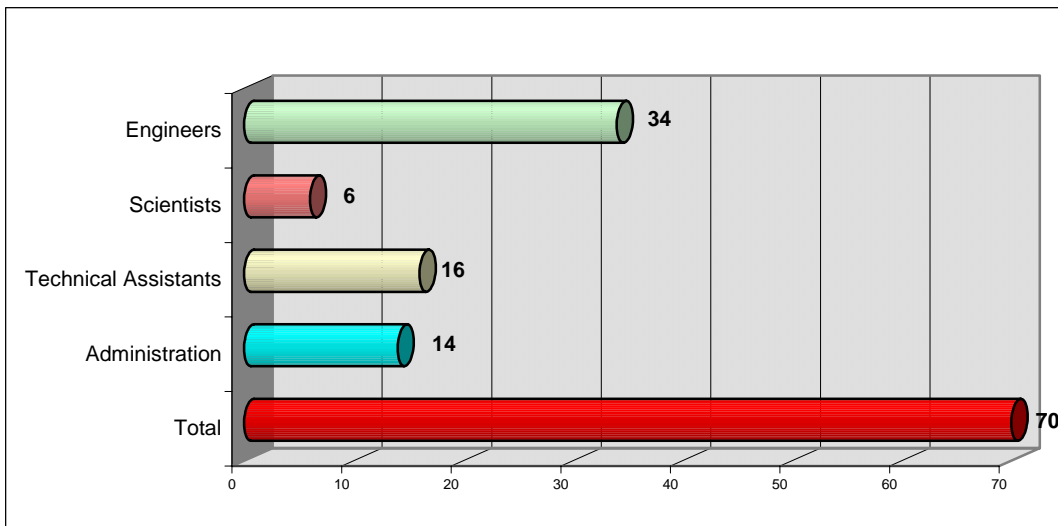


## Staff Resources

### Major partners:

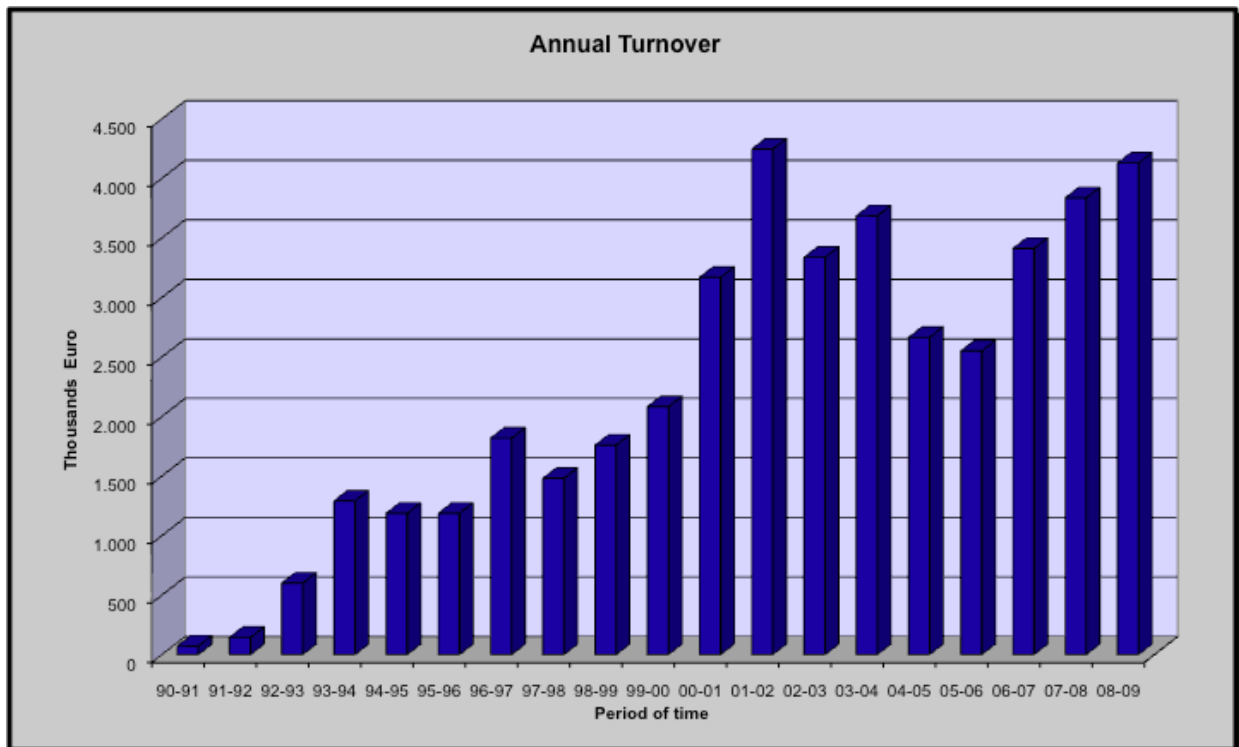
- Chronis Akritidis, Surveying Engineer – Transport, M.Sc.
- Stylianos Drosis, Civil Engineer – Public Health, M.Sc.
- George Kazos, Civil Engineer
- Michael Kaloudis, Civil Engineer
- Nikos Kartsonas, Civil Engineer – Public Health, M.Sc.
- Costas Lazarakis, Civil Engineer – Hydraulics
- Panos Papadakos, Civil Engineer – Transport, M.Sc.
- George Soilemezoglou, Surveying Engineer – Transport

### Staff Resources:



*Staff resources of the Company*

## Financial Data



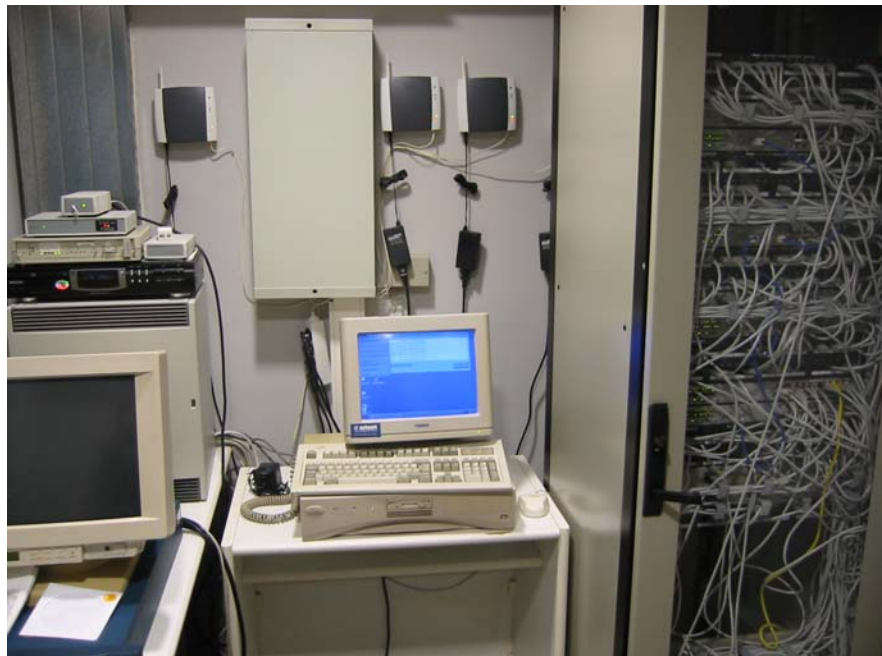
*Annual Turnover of NAMA*

## Registrations

- Hellenic Association of Consulting Firms (HELLASCO)
- EFCA
- European Commission Central Consultancy Register No ELL-21251
- European Bank for Reconstruction and Development (EBRD) – Environmental consultant register No 139827
- Greek Consultancy Register - Ministry of Environment, Physical Planning and Public Works in the following categories:
  - Structural Design (08): E' Grade (highest)
  - Transportation Design (10): E' Grade (highest)
  - Hydraulics Design (13): E' Grade (highest)
  - Topo-Surveying Design (16): E' Grade (highest)
  - Geotechnical Design and Investigations (21): C' Grade
  - Environmental Impact Assessment (27): C' Grade

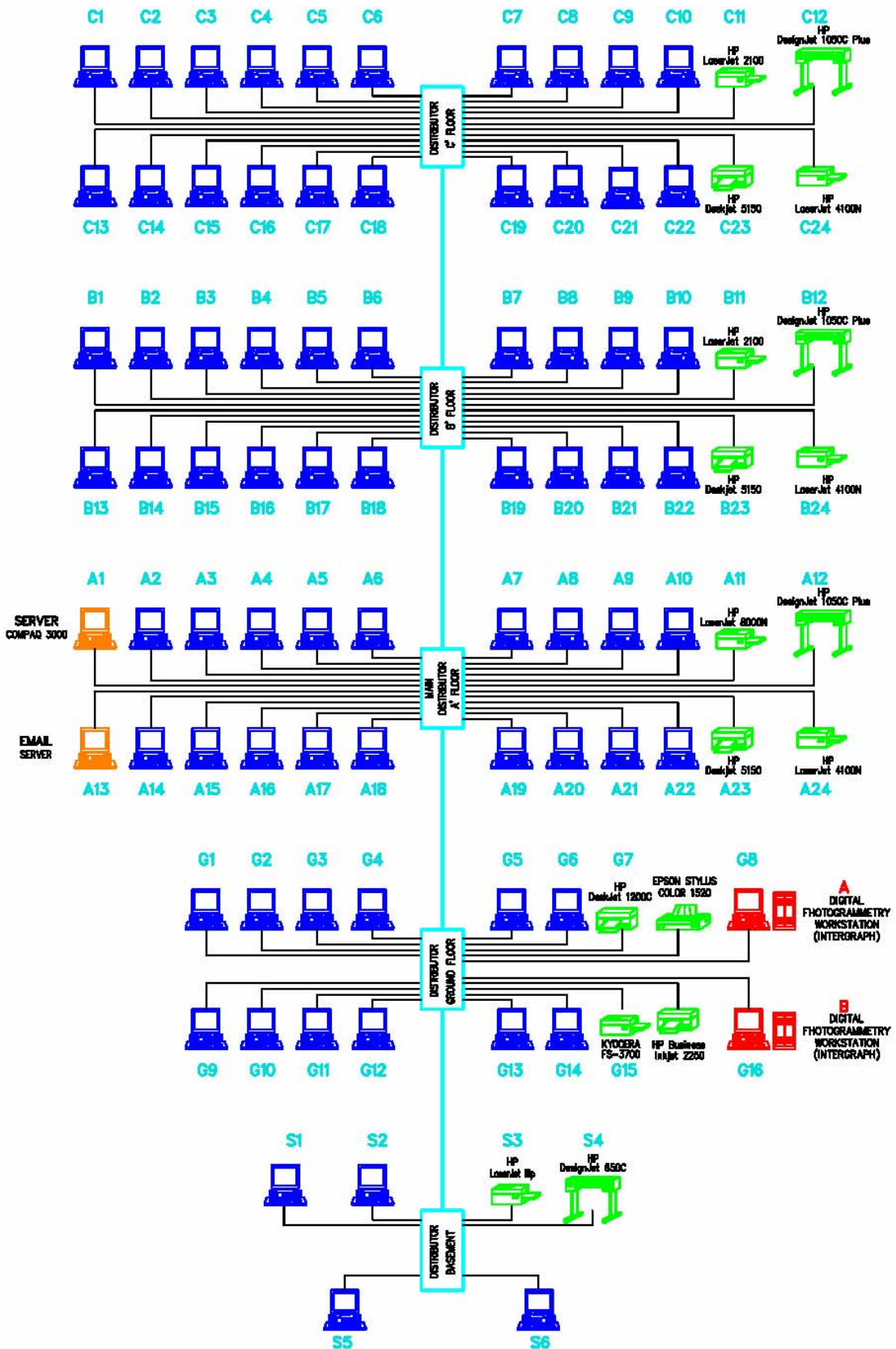
### Equipment Resources

- 100 Mbit Local Area Network
- Over 60 workstations that run mainly Microsoft Windows operating systems
- A file server based on RAID technology, that stores commonly used and project-related files guaranteeing high availability of the stored data
- A company owned e-mail server that manages all internal and external e-mails
- An Intranet server that offers a variety of services and useful, up-to-date, information in a comprehensive and well-structured form, e.g. company guidelines, project sheets, templates, technical specifications and various digital archives
- Three fully equipped digital photogrammetric workstations
- Three colour A0 plotters
- Over 10 laser and inkjet printers
- One A3 colour laser printer and copier
- Scanners and digitisers
- Land surveying equipment including total stations and GPS
- Software: CAD - GIS, RDMBS, Office Automation, Accounting and Logistics, Structural Design, Hydraulics, Geotechnical design, Highway design, Land surveying and cadastral mapping



*100 Mbit Local Area Network*

### COMPUTER NETWORK OPERATIONAL DIAGRAM



### **Additional Qualification data**

Our company **NAMA Consulting Engineers and Planners S.A.**, has developed and implements a Quality Management System in accordance with the ISO9001:2000 Standard, with the certification number 01 100 072095.

The company human resources comprise scientists and engineers of various skills and specializations, covering a variety of consultancy services.

The company uses very powerful and efficient computer systems, which are the most appropriate for large scale and complex projects.

The company is specialized in the application of the methodology of "Value Engineering" and employs certified engineers from SAVE International.

# Certificate

Standard **ISO 9001:2008**

Certificate Registr. No. 01 100 072095

TÜV Rheinland Cert GmbH certifies:

Certificate Holder:



**ΣΥΜΒΟΥΧΟΙ ΜΗΧΑΝΙΚΟΙ ΚΑΙ ΜΕΛΕΤΗΤΕΣ ΑΕ**  
**CONSULTING ENGINEERS & PLANNERS SA**

**NAMA CONSULTING ENGINEERS  
AND PLANNERS SA**  
32 PERRIKOU STR.  
115 24 ATHENS  
GREECE

Scope:

Design, study, supervision and provision of consulting engineering services of transportation, structural, hydraulic, surveying, geological, geotechnical, environmental protection and techno-economical projects.

An audit was performed, Report No. 072095. Proof has been furnished that the requirements according to ISO 9001:2008 are fulfilled.

The due date for all future audits is 18-09 (dd.mm).

Validity:

The certificate is valid from 2010-11-02 until 2013-09-25.  
First certification 2007

2010-11-09

  
TÜV Rheinland Cert GmbH  
Am Grauen Stein · 51105 Köln



DGA-ZM-58-95-00