



---

BUILDING DESIGN – SPECIAL TECHNICAL SERVICES – INFRASTRUCTURE DESIGN – ENERGY CONSULTING – MARITIME DESIGN

European Economic Interest Group of **ARCHITECTS, ENGINEERS, PLANNERS, SPECIAL CONSULTANTS,** and **PROJECT MANAGERS**

# Overview

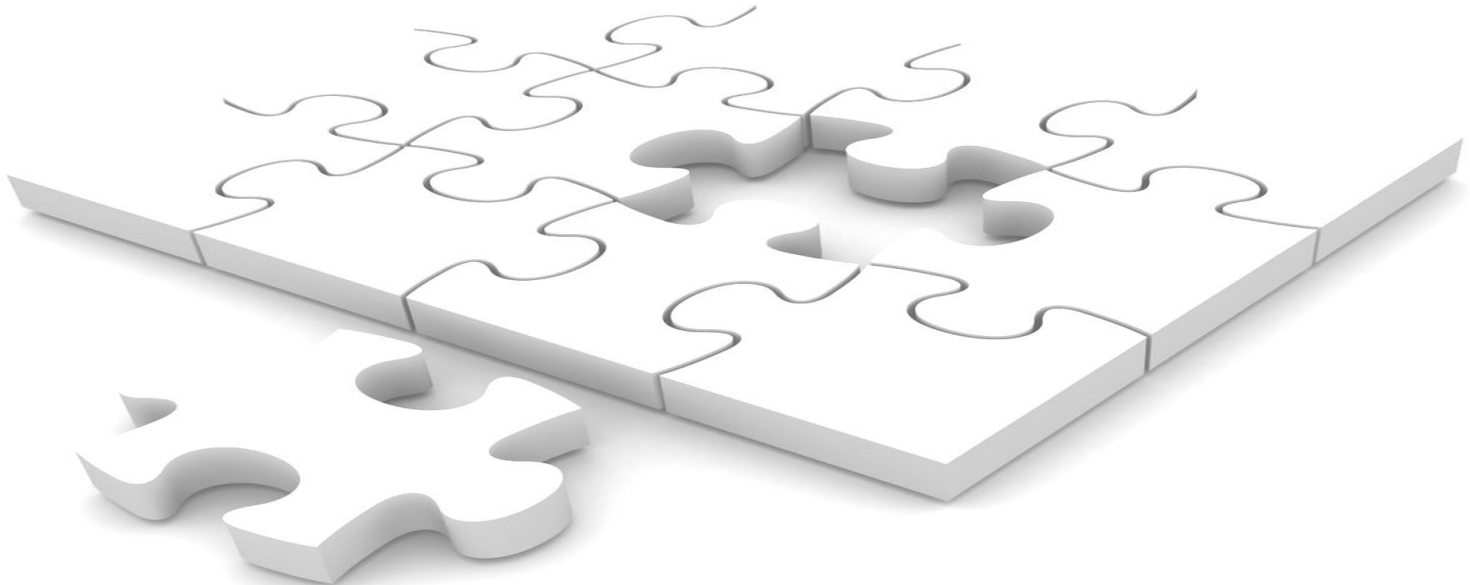
Six of the leading Greek Engineering & Planning Firms:

**BOBOTIS+BOBOTIS ARCHITECTS, JEP A, NAMA, TRITON, TTA and MHXME,**

have decided to join their combined experience and expertise to form **SIBRAXIS EEiG**, a European Economic Interest Group of **ARCHITECTS, ENGINEERS, PLANNERS, SPECIAL CONSULTANTS, and PROJECT MANAGERS.**

The group companies have been servicing the design, planning and construction sectors for over 32 years and, **SIBRAXIS today comprises more than 250 talented highly skilled professionals.**

Our group collaborates with industry specific expertise consultants to deliver multi-disciplinary holistic advice, tailor-made solutions at each stage of a project as well as business development.

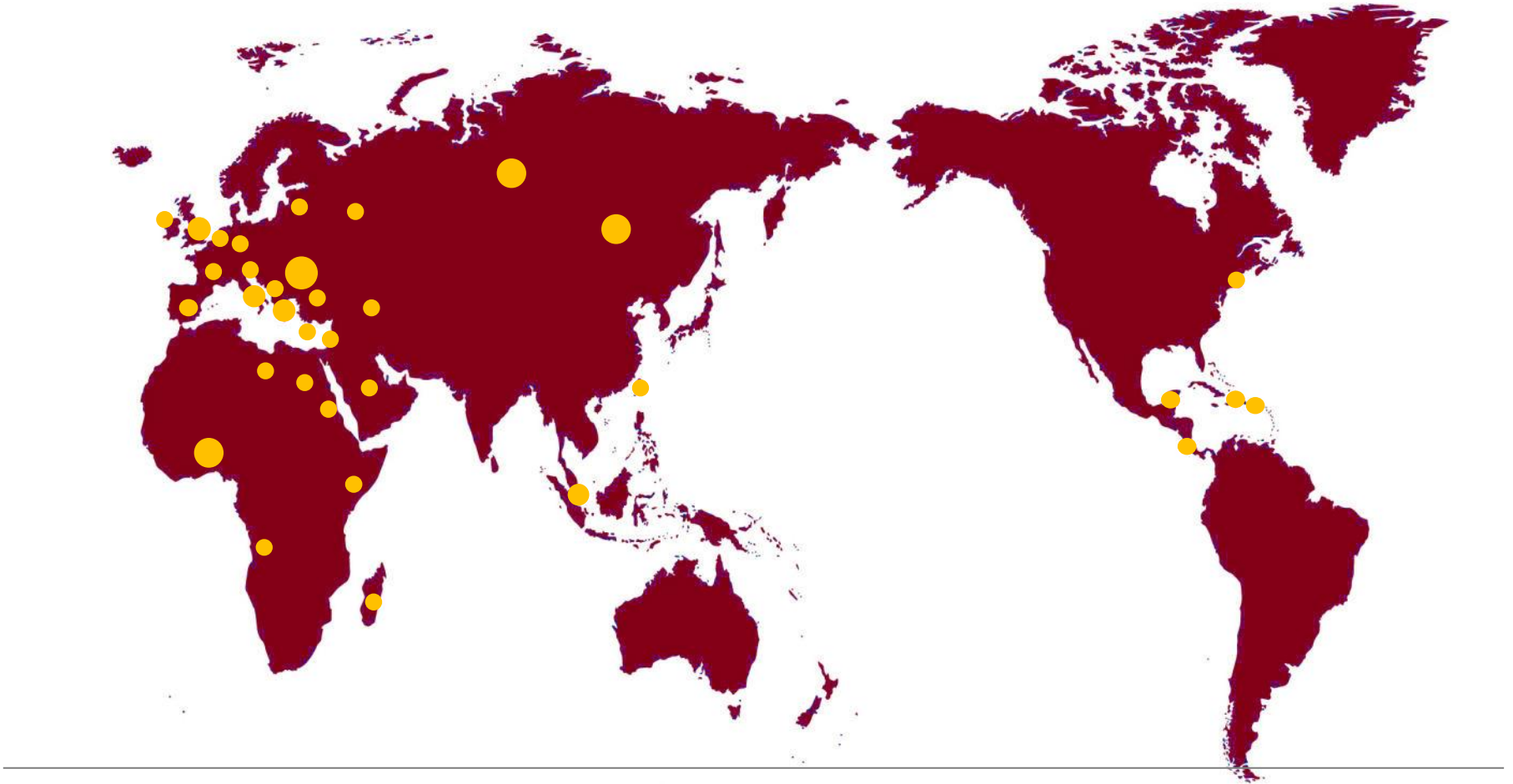




# Worldwide

Relevant Projects have been implemented in:

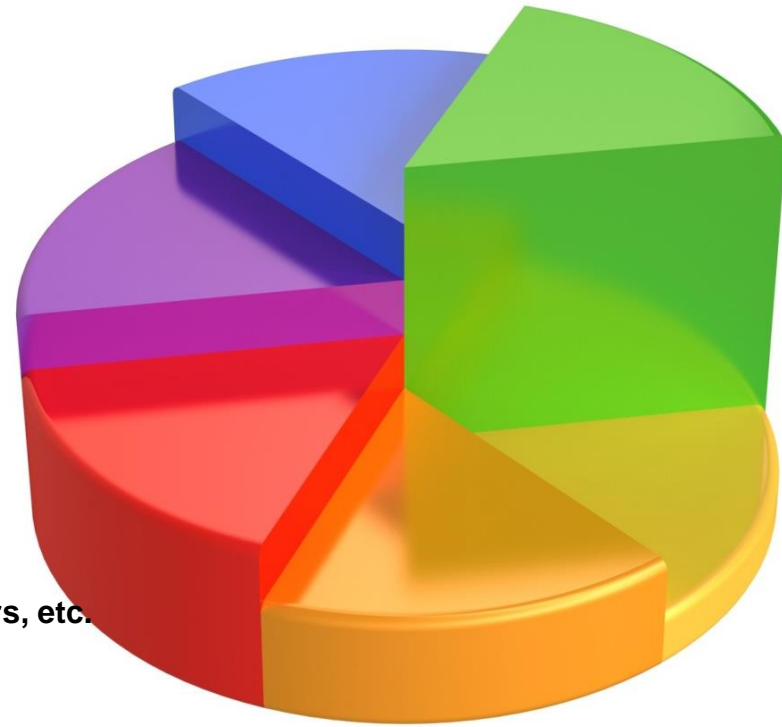
**Greece, Lebanon, Saudi Arabia, the United Arab Emirates, Ghana, Libya, Egypt, Botswana, Eritrea, Albania, Italy, Germany, Georgia, Ireland, UK, Latvia, Moldavia, Romania, Russian Federation, Somalia, San Marino, Singapore, Montenegro, the Netherlands, Taiwan, Cyprus, China, Ukraine etc.**



# Main Sectors

Our fields of expertise include:

- 1. Urban Design**
- 2. Civic Design / Banks, etc.**
- 3. CULTURAL institutions / Museums, mixed use, etc.**
- 4. The Health Sector**
- 5. The Shopping Sector**
- 6. Transportation / Airports, ports, motorways, railways, Freight Centers, etc.**
- 7. Education Facilities**
- 8. Hotel & Leisure Design**
- 9. Sport centers, stadiums, swimming pools and related facilities**
- 10. Office & Mixed use office with retail Facilities**
- 11. Industry & Manufacturing**
- 12. Mixed use Compounds**
- 13. Residential**
- 14. Interior Design / General, Corporate Identity**
- 15. Infrastructure / Datacenters, Water management & supply, Sewage, Waste treatment, Oil & Gas**
- 16. Energy consultancy - sustainability& Renewable**



# Why SIBRAXIS

**S**ervicing specific needs of clients for over 30 years in various sectors

**I**n-depth knowledge of the region, the culture and clients' priorities

**B**lending the capabilities of 5 leading consultancies

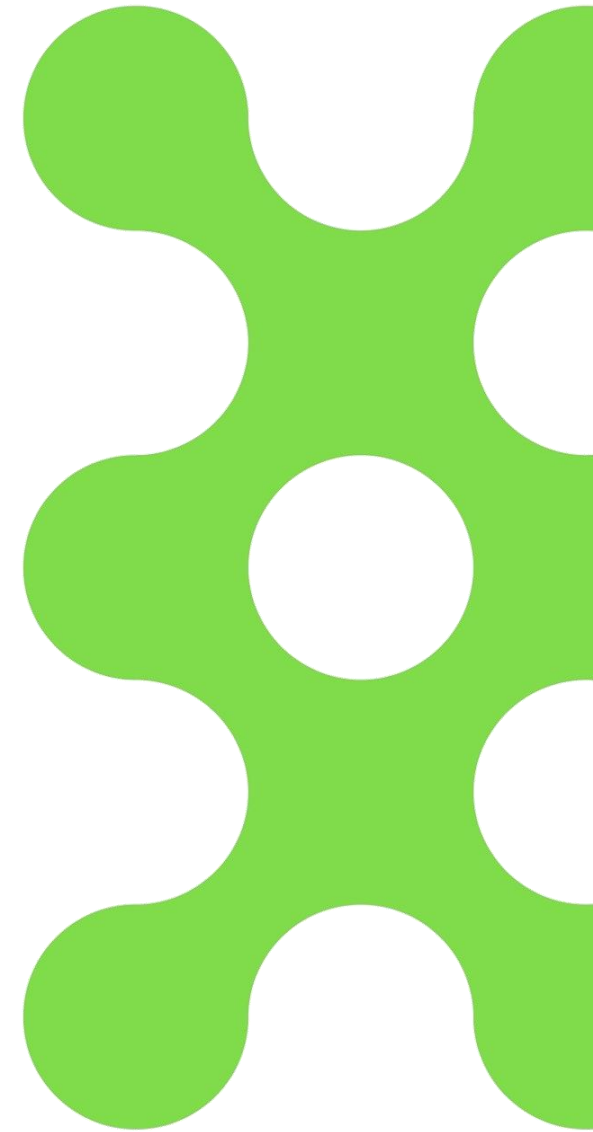
**R**eference in any field of engineering

**A**dding value to your projects through our expertise

**X**perience in servicing the design, planning and construction sector

**I**nsisting in top quality services

**S**pecialization and efficient performance at competitive fees



# 1. URBAN DESIGN

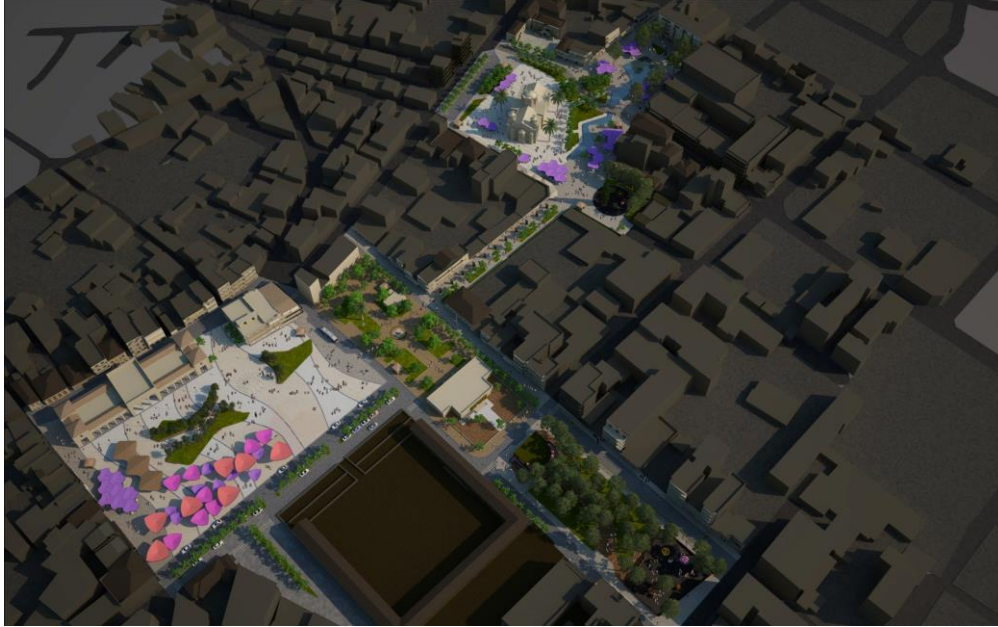
---



SIBRAXIS believes that it's not just buildings but urban design also that affects our well-being.

**We have successfully implemented more than 15 urban design related projects.**





**Urban Development of the city center of Argos,  
Greece**  
Architectural Services

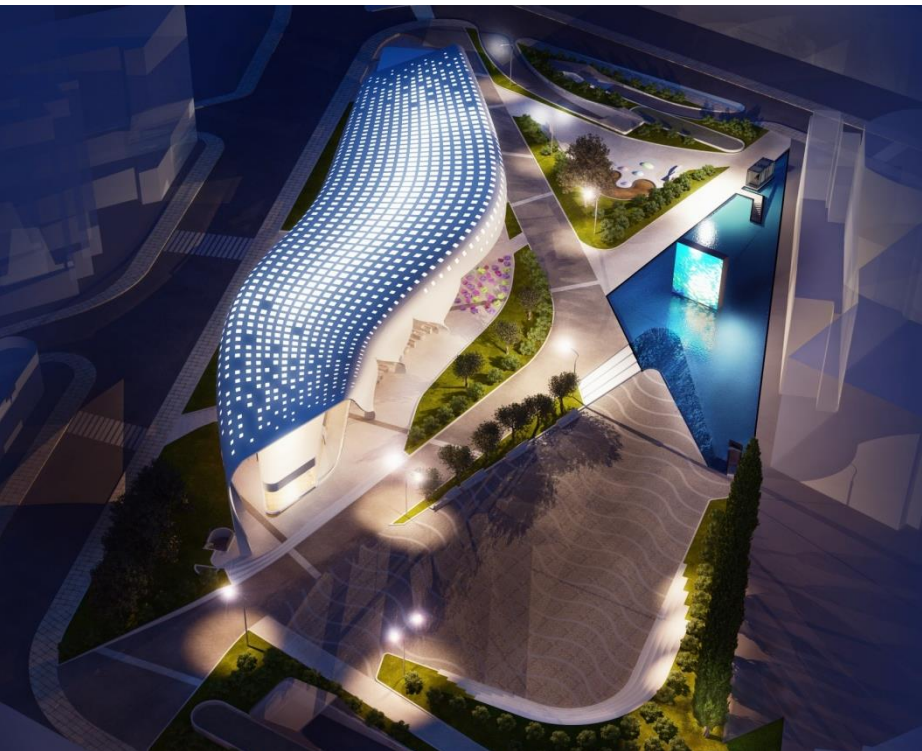


**G. Haritou Square, Rhodes, Greece**  
Architectural Competition - Architectural Services



## Hellenikon Metropolitan Park, Greece

### Architectural Competition - Architectural Services



## Redesign of the Old GSP Area, Nicosia – Cyprus

### Architectural Competition - Architectural Services

## Revamping of Monastiraki Square, Greece

Electromechanical Services



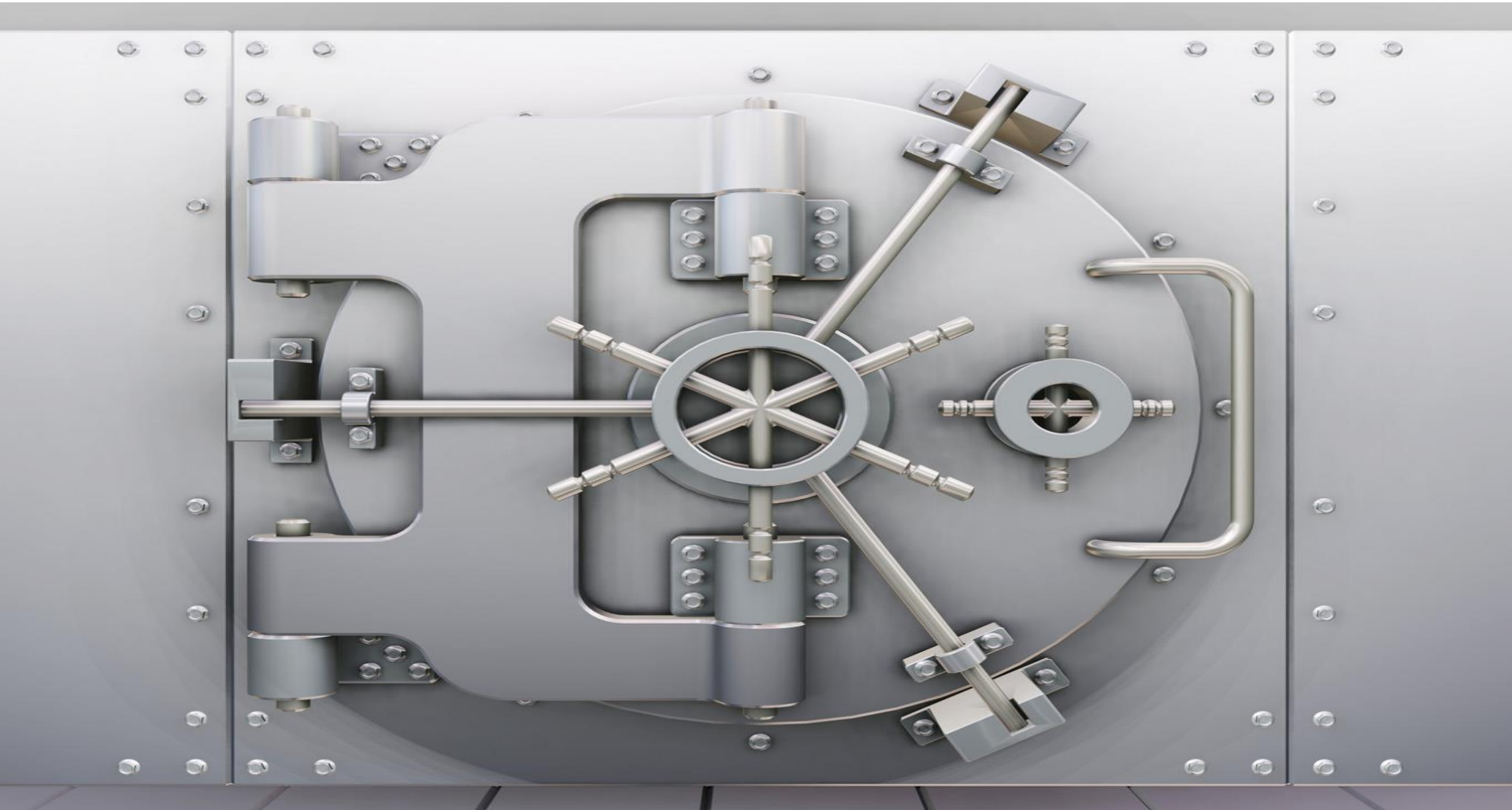
**Re-think Athens** (Redevelopment of Panepistimiou Street and Tramway Extension with Related Traffic Measures in the Framework of Revitalizing the Center of Athens along the Axis of Panepistimiou Street), **Greece**  
Transport, Structural, Hydraulic, Geotechnical Services



# 2. CIVIC-PUBLIC DESIGN

---

## 1. BANKS







**National Bank of Greece**  
Architectural Competition - Architectural Services

SIBRAXIS has a wide experience in Banks.

**We have worked closely with the majority of Greek Banks especially Eurobank with over 130 buildings and 480 branches. We have also worked with International Banks such as Bank of America, Bank of Cyprus, EFG Luxemburg, EFG Beograd etc.**

BANKING & FINANCIAL INSTITUTIONS



# Eurobank EFG



**EUROBANK**  
over 130 buildings and 480 branches

Electromechanical Services





**Commercial Bank - Greece**  
Architectural Services



**Societe Generale - Greece**  
Electromechanical Services



**Bank of America - Greece**  
Electromechanical Services

**Eurobank Headquarters & New Data Center,  
Athens-Greece**  
Electromechanical Services



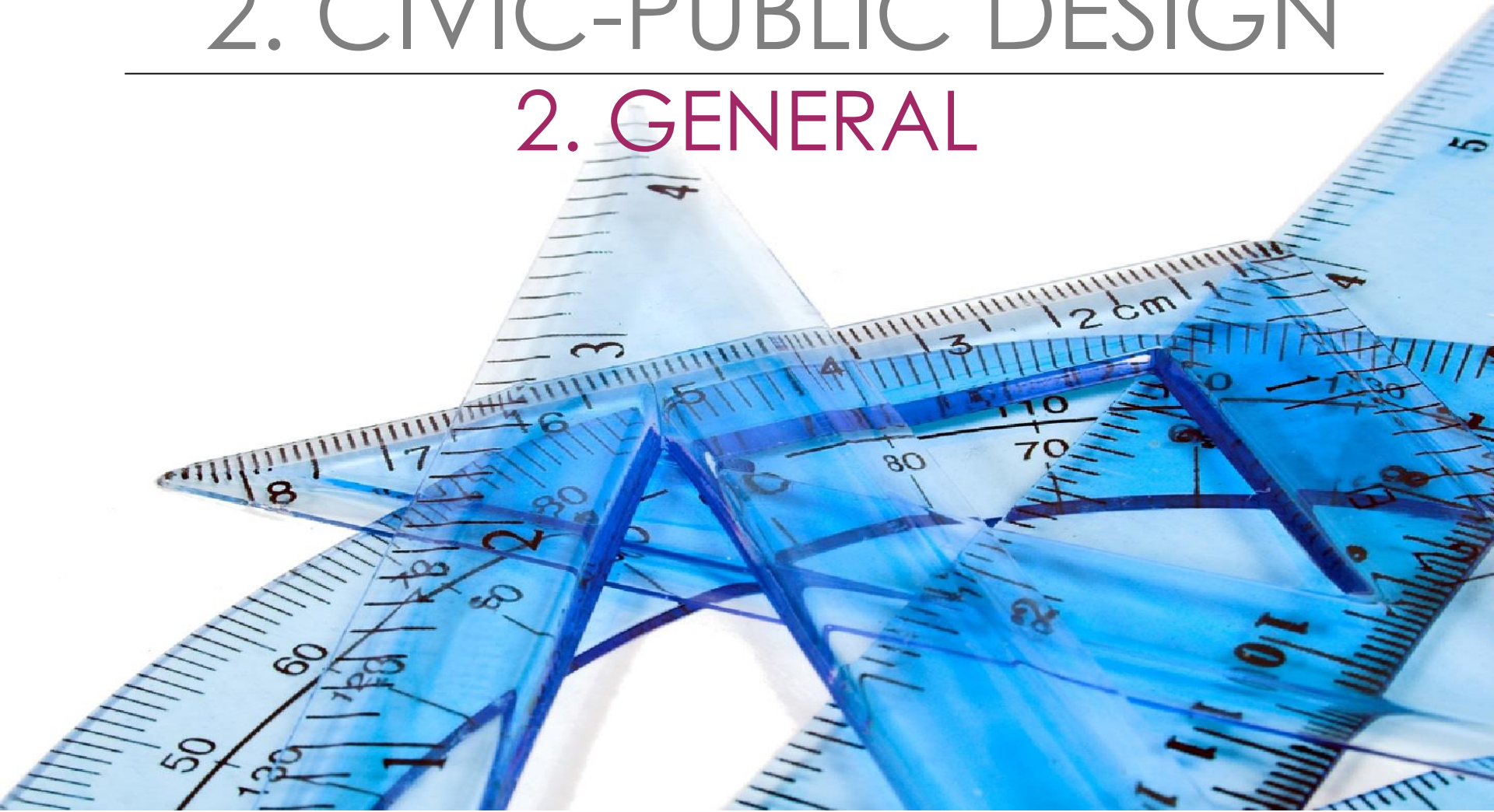
**National Bank of Greece – Office Building,  
Athens-Greece**  
Electromechanical Services



# 2. CIVIC-PUBLIC DESIGN

---

## 2. GENERAL



SIBRAXIS has a remarkable experience in designing public – civic projects like Town Halls, Religion buildings, Community Centres etc.

**More than 30 civic projects have been implemented.**

**Building Complex at  
Panepistimiou 23,  
Greece  
Architectural Services**







**Monastery of St. John the Theologian  
In Patmos, Greece**  
Electromechanical Services



**Church in Romania**  
Architectural Services



**Soufari Serai  
Restoration at  
Ioannina, Greece**  
Electromechanical  
Services



**Thessaloniki Town Hall & Underground Parking Area, Greece**  
Electromechanical Services



**Thessaloniki Town Hall, Greece**  
Electromechanical Services

**Engineers & Public Works Contractors Fund  
(T.M.E.D.E.) Office Building, Athens - Greece**  
Electromechanical Services







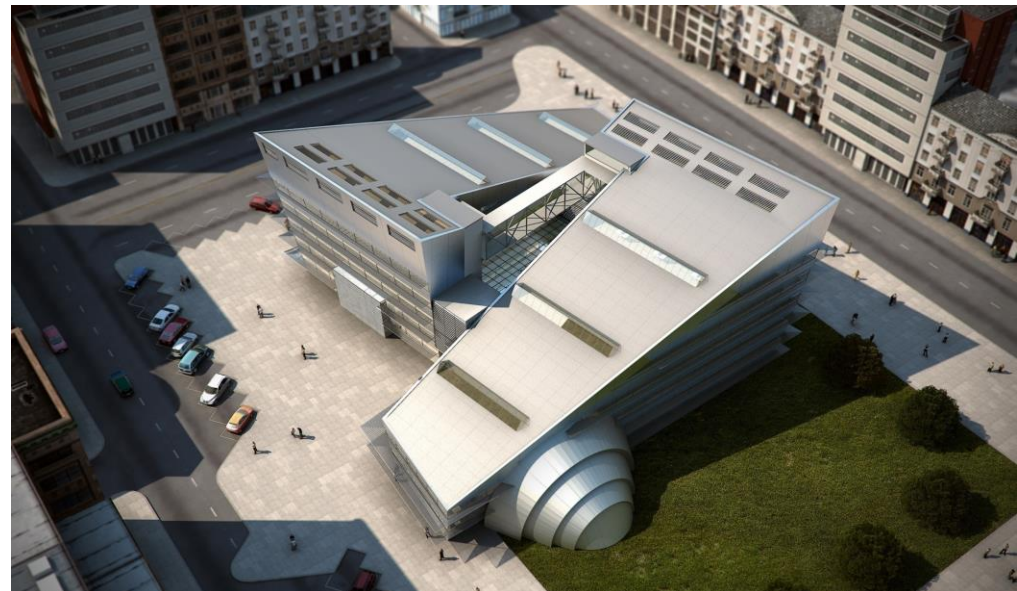
**OAK Conference Centre in Crete, Greece**  
Architectural Services



**Pentagon Conference Room, Athens - Greece**  
Architectural Services



**New Town Hall at Glyfada, Greece**  
Structural Services



**Municipality of Karditsa, Greece**  
Architectural Competition - Architectural Services





**New National Environmental Center of Athens,  
Greece**  
Electromechanical Services



**Town Hall of Palaio Faliro, Greece**  
Structural Services

**Cultural & Congress Center,  
Heraklion / Crete - Greece**  
Electromechanical Services



# 3. CULTURAL DESIGN

---

## 1. MUSEUMS



The firm along with its special consultants, has the ability and the experience to carry out a full design study for a perfectly organized museum..





**Multifunctional Museum Facility, St. Petersburg - Russia**  
World Bank Competition **1<sup>st</sup> PRIZE** - All Services





## Museum of Acropolis, Greece

Electromechanical Services





## Museum of Acropolis, Greece

Electromechanical Services







## New Museum of Patras, Greece

Shortlisted for the International FX Awards under the category MUSEUMS.  
Architectural Competition **1<sup>st</sup> PRIZE** - Architectural Services





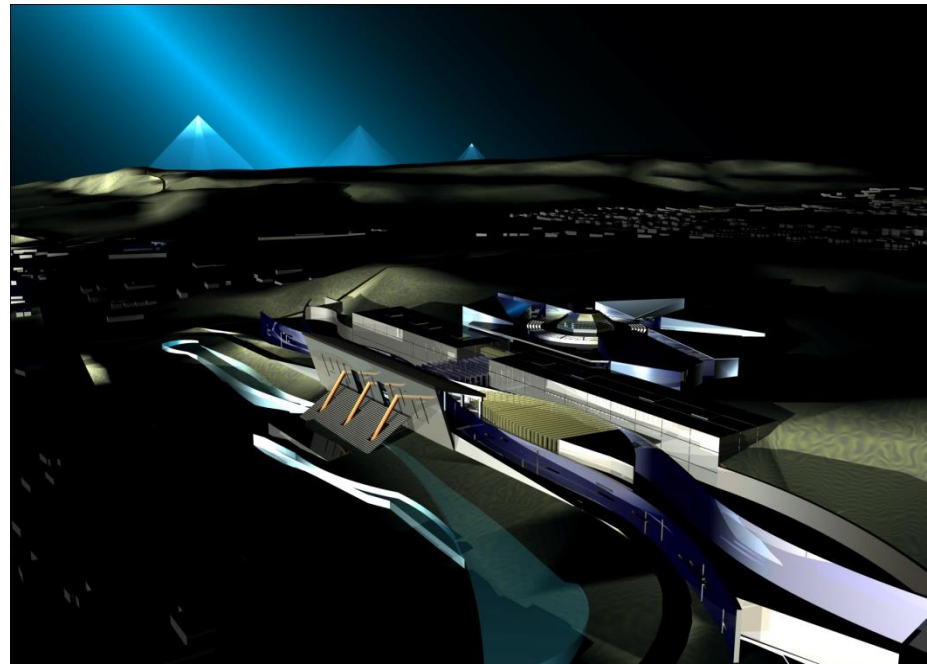
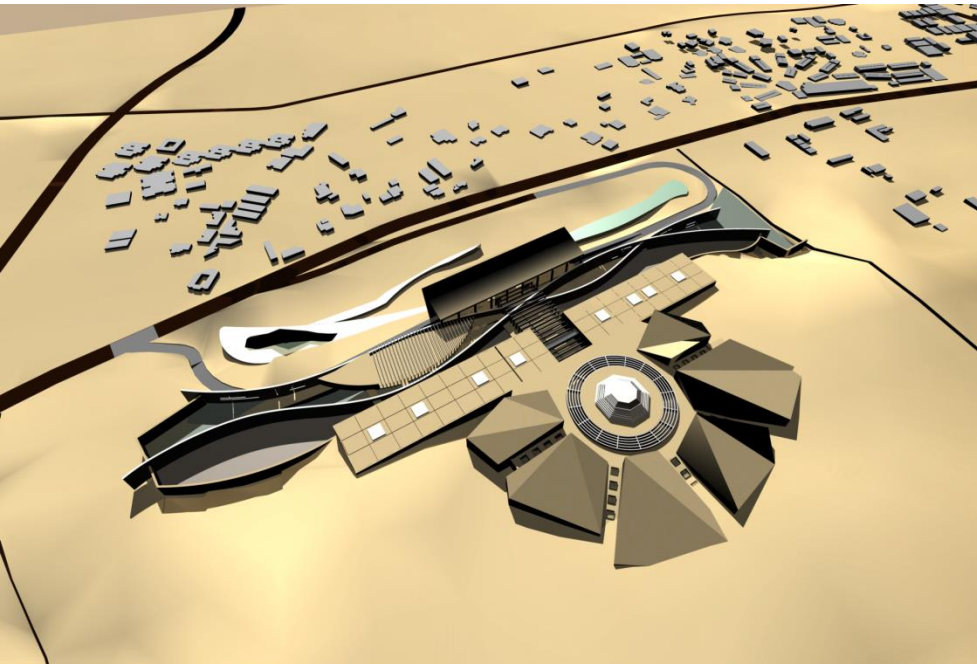
## New Museum of Patras, Greece

Shortlisted for the International FX Awards under the category MUSEUMS.

Architectural Competition **1<sup>st</sup> PRIZE** - Architectural Services





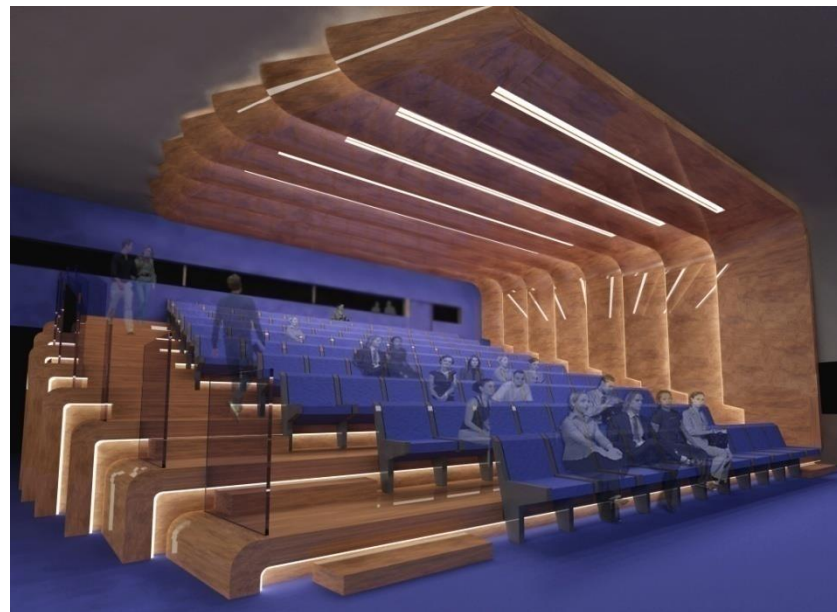
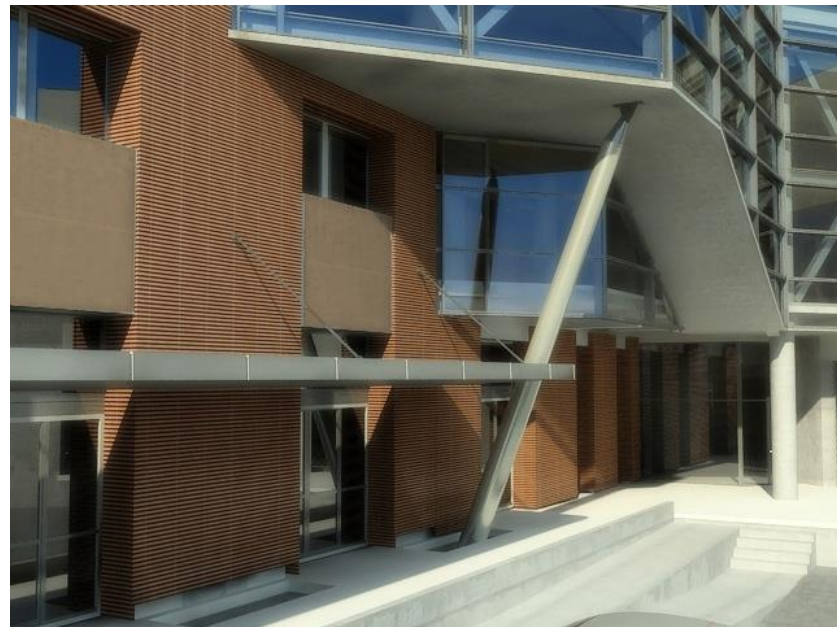


**Grand Egyptian Museum of Egypt**  
International Competition - Architectural Services



## New Archaeological Museum of Chania, Greece

Architectural Competition **1<sup>st</sup> PRIZE** - Architectural Services







## Museum of Vergina, Greece

Architectural Competition **2<sup>nd</sup> PRIZE**

Architectural Services







**NEW CYPRUS MUSEUM**  
Architectural Competition - Architectural Services





**Archaeological Museum of Nikopolis, Greece**  
Electromechanical Services



**Archaeological Museum of Ilida, Greece**  
Electromechanical Services



**Museum of Contemporary Art of Athens, Greece**  
Electromechanical Services



**Jewish Museum of Greece**  
Electromechanical Services





**Renovation of Thessaloniki Archaeological  
Museum, Greece**  
Structural Services



**Museum of Alexandroupolis, Greece**  
Structural Services



**Museum of Vergina, Greece**  
Structural Services



**Thessaloniki Technological Museum – “Noesis”**  
Structural Services



# 3. CULTURAL DESIGN

---

## 2. MIXED USE







## Cultural Archives of PIRAEUS BANK GROUP

Architectural Services

CULTURAL / MIXED USE





**Fivos Cinema, Athens - Greece**  
Architectural Services



**Thessaloniki Concert Hall – Building M2 – Greece**  
Structural Services



**National Opera Rehearsal Building & Ballet School**  
Electromechanical Services

CULTURAL / MIXED USE



# 4. HEALTHCARE

---



SIBRAXIS specializes in designing Greenfield healthcare facilities such as hospitals, medical laboratories and primary healthcare clinics.

**More than 28 grand hospitals** have been realized in Greece and Saudi Arabia.



**The Cyprus Institute of Neurology and Genetics (CING), Cyprus**  
Architectural Competition - Architectural Services





**“Latsio” Burn Hospital, Greece**  
(Donation of the Latsis family)  
Electromechanical Services



**Children's Hospital Aghia Sofia, Greece**  
State Hospital  
Electromechanical Services



**“Onassio” Cardiac Surgery Hospital**  
(Donation of the Onassis family)  
Electromechanical Services







**IKA**  
 (Social Security Organisation's HQ  
 in various towns), Greece  
 State Buildings  
 Electromechanical Services







**KAT, State Hospital, Athens - Greece**  
 Electromechanical Services



**“Sotiria” Hospital, Athens - Greece**  
 Electromechanical Services



**“Evangelismos”, State Hospital, Athens - Greece**  
 Electromechanical Services



**Dr. Suleiman Fakeeh Hospital Jeddah, Saudi Arabia**  
 Electromechanical Services





**Chalkidiki General Hospital ,Poligiros- Greece**  
Structural Services



**Social Security Branch of Ano Liossia, Greece**  
Structural Services



**Social Security Branch of Heraklion - Crete, Greece**  
Structural Services



**Social Security Branch of Ano Liossia, Greece**  
Structural Services





**LATSIO Burn Center, Elefsina - Greece**  
Electromechanical Services



**Agia Sophia Kids General Hospital,  
Athens - Greece**  
Electromechanical Services



**General Hospital of Lefkada,  
Greece**  
Structural Services



The design team, apart from planners, architects and engineers, comprises of **specialized doctors, hospital operators and medical equipment specialists.**

It is a team effort to design modern health care units and SIBRAXIS has the expertise to combine all specific knowledge and skills required to achieve a **“state of the art” design, always in accordance to the client needs.**



# 5. TRANSPORT DESIGN

---

## 1. AIRPORTS





SIBRAXIS is powerfully active in the field of **Airport Design**.

We have been involved in 6 international airport projects to include

- the International airport of Abu Dhabi,
- the British Heathrow airport extension,
- 7 Regional Airports of Greece,
- the Hellenic International Airport El. Venizelos and
- the International Airport in Libya.



**Thessaloniki Airport**



**Kavala Airport**



**Kerkira (Corfu) Airport**



**Zakinthos Airport**



**Chania Airport**



**Aktio Airport**



**Upgrade, Maintenance, Management & Operation of Cretan, Continental Greece & Ionian Sea Regional Airports, Greece**

All Services



## SKG “Makedonia” Airport



**Upgrade, Maintenance, Management & Operation of Cretan, Continental Greece & Ionian Sea Regional Airports, Greece**

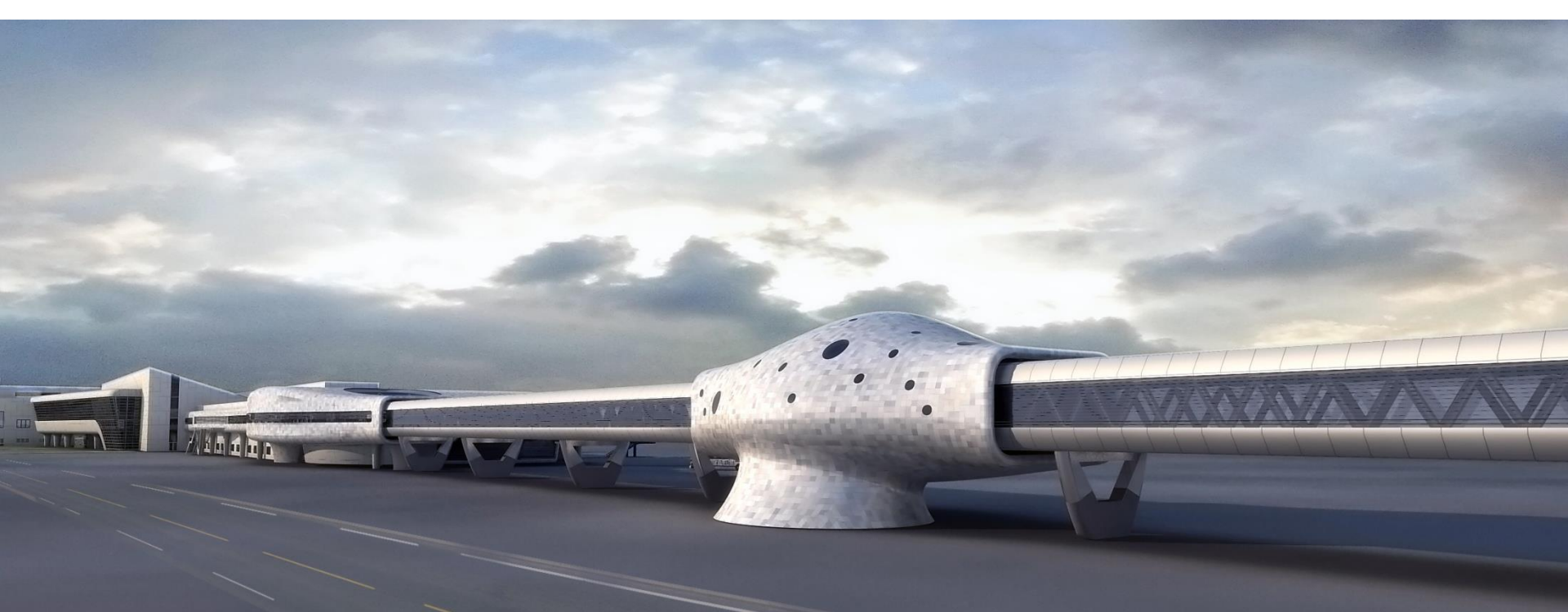
All Services

TRANSPORT/ AIRPORTS

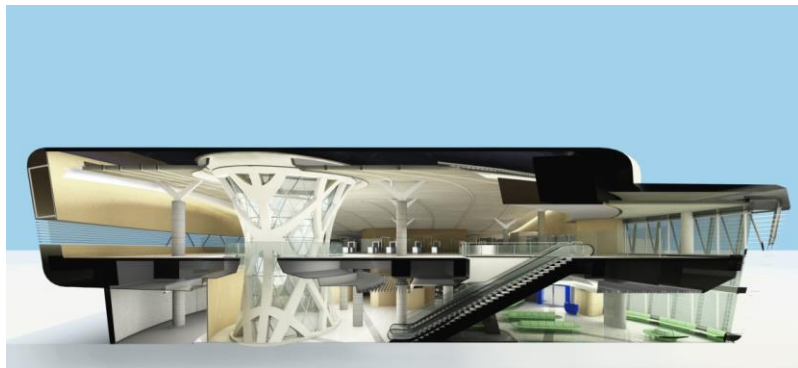


**British Heathrow airport extension, UK**  
BEMS design in association with Siemens International

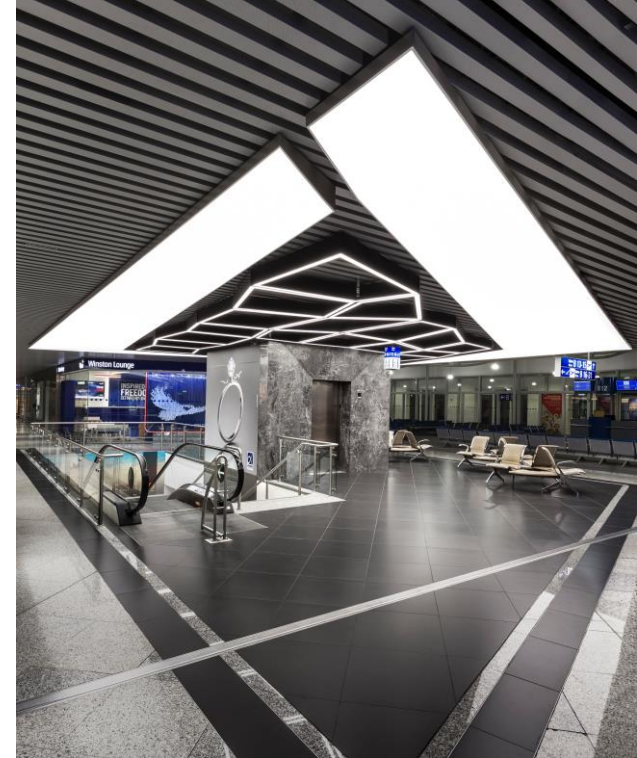




**International Airport El. Venizelos, Athens, Greece**  
Architectural Competition **1<sup>st</sup> PRIZE**  
Architectural & Electromechanical Services







**International Airport El. Venizelos, Athens, Greece**  
 Architectural Competition **1<sup>st</sup> PRIZE**  
 Architectural Services







**International Airport El. Venizelos – Transfer Baggage Facility (TBF) , Athens, Greece**  
 Architectural Services



**Tripoli International Airport, Libya**  
 Electromechanical Services

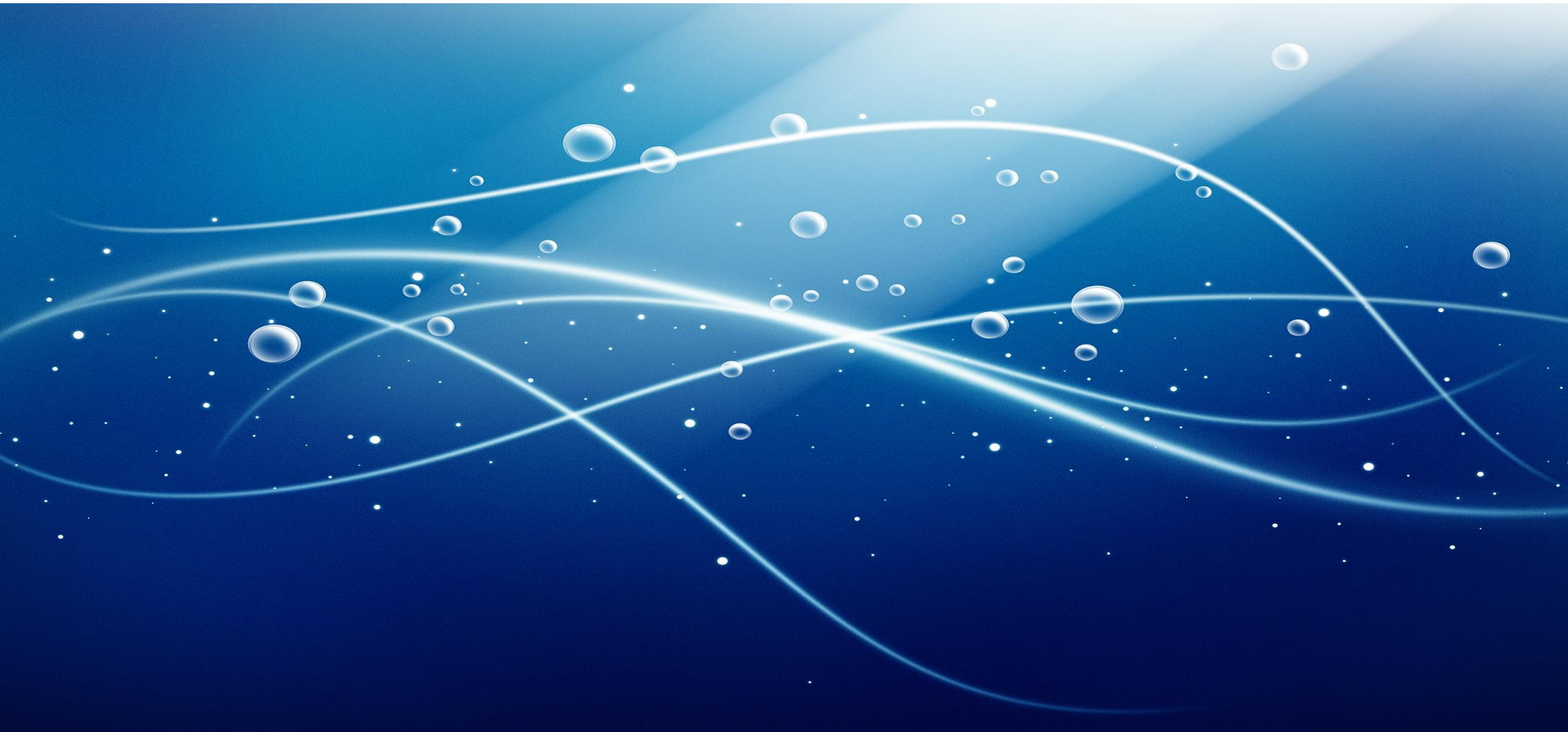


**International Airport El. Venizelos - Ramp Service Station Bldg & Sewage Disposal Bldg, Athens, Greece**  
 Architectural Services

# 5. TRANSPORT DESIGN

---

## 2. PORTS / MARINAS / LOADING & OFFSHORE TERMINALS







**New Port & Marina, Mykonos, Greece**



**Design of the New Kavallas Port, Greece**



**New Port of Patras, Greece**

SIBRAXIS is engaged in the **design of harbors, marinas and related coastal development works, shipyards and ship scrap yards, loading and unloading terminals, underwater tunnels, mooring structures, design of floating structures, fendering and anchoring systems, pollution control facilities, analysis of coastal processes, design of coastal and shoreline defence structures, artificial nourishment studies, scour control measures, design, construction supervision and post-auditing of underwater pipelines for oil, gas water and effluent transportation, power and telecommunications cables installation and protection studies.**



**NEW TANKER TERMINAL AT  
KING FAHD INDUSTRIAL PORT,  
JUBAIL, SAUDI ARABIA**



**REHABILITATION OF THE BERBERA OIL  
JETTY COMMISSION OF THE  
EUROPEAN COMMUNITY SOMALIA UNIT**



**DESIGN AND CONSTRUCTION  
OF A RAIL - FERRY FACILITY  
(RA-RA) IN THE PORT OF POTI GEORGIA**



**CHIOS PORT, GREECE**

**Such projects have been undertaken in Saudi Arabia, the United Arab Emirates, Libya, Egypt, Lebanon, Cyprus, Albania, Angola, Eritrea, Georgia, Ireland, Latvia, Moldavia, Romania, Russia, Somalia, Singapore, Serbia, Montenegro, the Netherlands, Taiwan and Ukraine.**





**Offshore Cooling Water Pipeline  
Systems, Java – Indonesia**  
Technical Consulting Services



**New Fishing Port at Dila, Libya**  
Technical Consulting Services



**Paralimni Marina, Cyprus**  
Engineering Services



**New Marina at Ayia Napa, Cyprus**  
Engineering Services





**New Tripoli Port at Tajura, Libya**  
Engineering Services



**Masterplan of Volos Port, Greece**  
Engineering Services



**Rhodes Marina, Greece**  
Technical Consulting and Engineering Services



**Completion Maritime Works of Dock V of Heraklion Harbor, Greece**  
Engineering Services

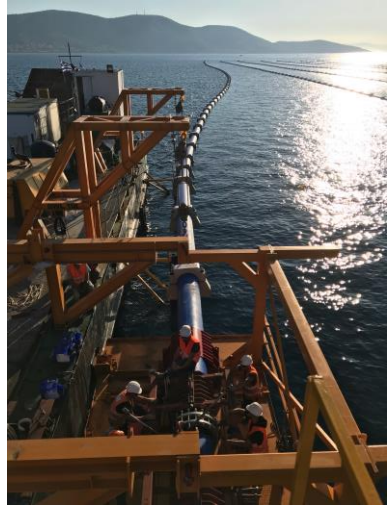




**Extension of the 10-28 Runway of SKG Airport**  
Consulting Services



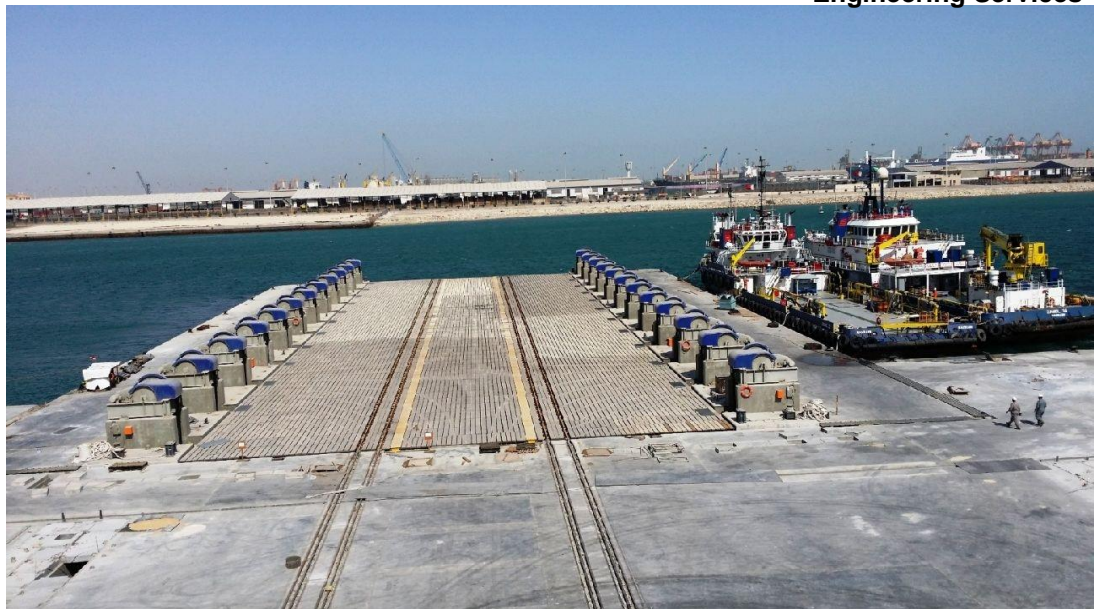
**Limassol Port Container Terminal, Cyprus**  
Technical Consulting and Engineering Services



**Aigina Salamina Aqueaduct, Greece**  
Technical Consulting and Engineering Services



**New Port of Igoumenitsa, Greece**  
Technical Consulting and Engineering Services



**Zamil New Shipyard – Damman Port, Saudi Arabia**  
Engineering Services





**Berth 20 at Yanbu Industrial Port,  
Saudi Arabia**  
Engineering Services



**Marine Works For Shoaiba, Saudi Arabia**  
Engineering & Technical Consulting Services



**Rabigh S070 Marine Loading,  
Saudi Arabia**  
Technical Consulting and Engineering



**YANBU 3 - JETTY RFQ, Saudi Arabia**  
Engineering Services



**EPC JETTY, Saudi Arabia**  
Engineering Services





**NEW V.I.P. MARINA AT DARNAH, DARNAH, LIBYA**  
**Architectural Services**  
**Maritime Design**



**Marina Ermionis SA, Porto Cheli - Greece**  
**Electromechanical Services**

Upgrading of the existing General Cargo Port of Darnah, Libya to a V.I.P. marina for a total of 350 super yachts and mega yachts.

A cruiser ship berth on piles is also provided as well a recreation isle to host an Indonesian Restaurant.

The building program includes the construction of a recreational / commercial complex, a passenger terminal and the yacht repair yard.

Extensive landscaping is foreseen and the next stage will include an open theater and a five star hotel.



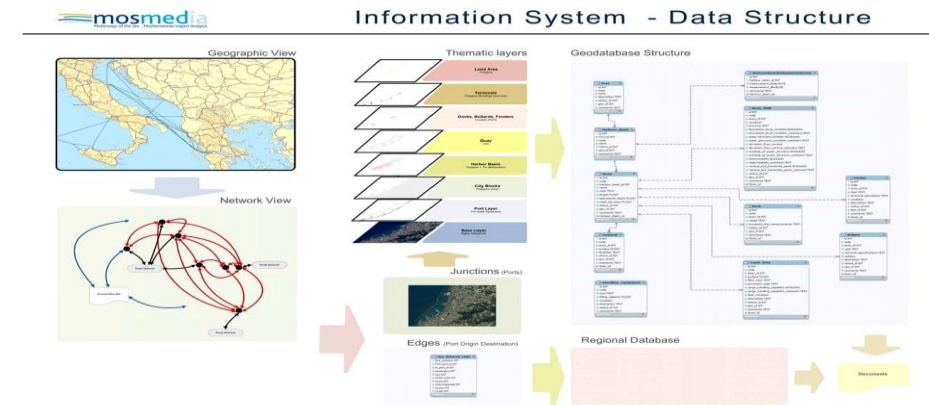
SEF- Athens - Greece

Porto Carras - Greece

Port of Igoumenitsa- Greece



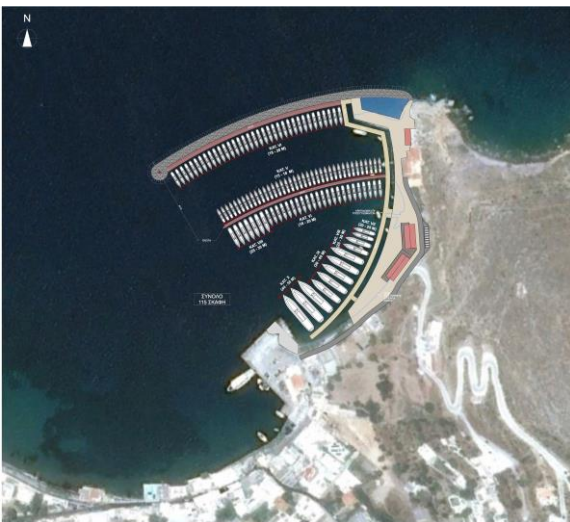
Port of Zakynthos- Greece



The Mediterranean Observatory on the Motorways of the Sea,  
Mediterranean Impact Analysis, Igoumenitsa, Greece

**With respect to Greece** during the last thirty years the company has undertaken, on behalf of the Ministries of Public Works and Mercantile Marine as well as for various Port Authorities, **the design of nearly all the major passenger and goods Port facilities connecting Greece to the European Union** such as the Ports of Patras and Igoumenitsa, as well the new extension and upgrading of Salonica Container Terminal which are nowadays established as the main gateways from and to the European Union mostly via Italy and the Balkan States.





**Leros- Greece**



**Paros- Greece**



**Sifnos - Greece**



**Symi- Greece**



**Thirasia- Greece**

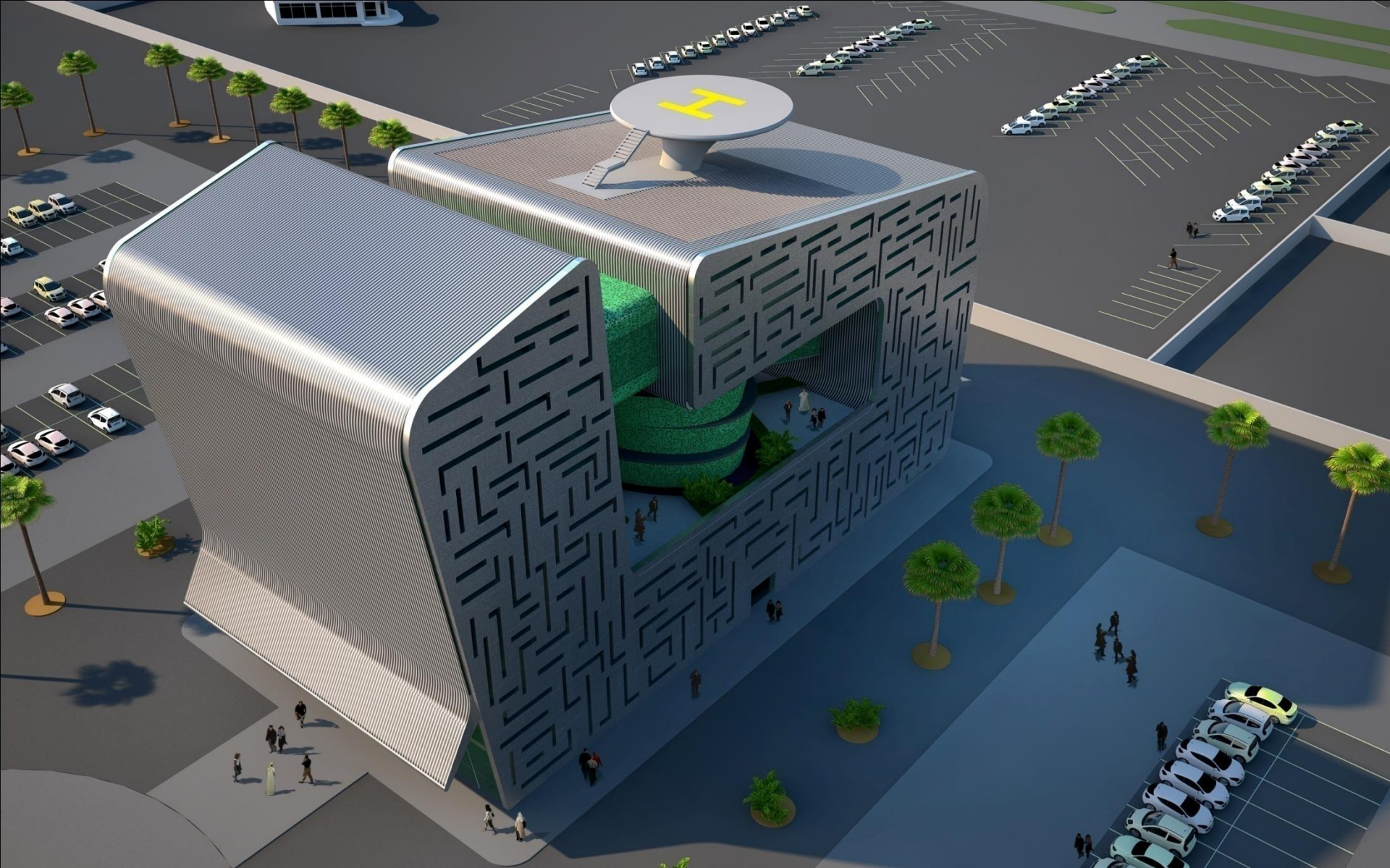


**Vourkari - Greece**



**New Doha Port Project, Qatar  
Control Tower**  
International Competition





**New Doha Port Project, Qatar**  
**Customs & Port Authority Administration**  
International Competition

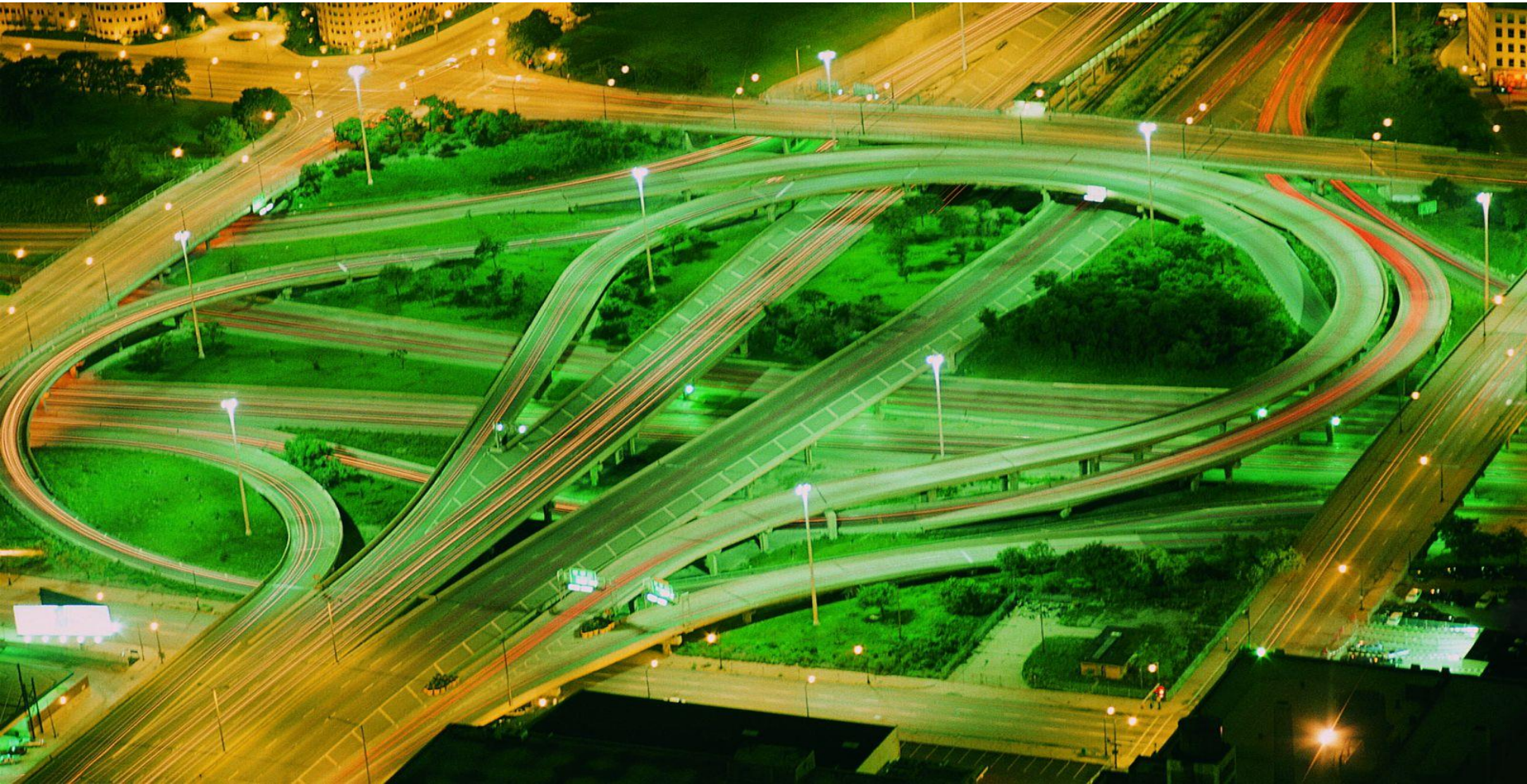
TRANSPORT / MARITIME DESIGN



# 5. TRANSPORT DESIGN

---

## 3. MOTORWAYS, TRAMWAYS, ETC.







**Athens - Lamia Motorway / Kastro Interchange**



**Athens - Korinthos Motorway / Interchange N. Peramos**

We have **significant experience** in many major **infrastructure projects** in the field of **transportation**, under different funding structures. Specializing in all respective fields, we support our clients throughout all stages of implementing large scale projects for the development of motorways, airports, and other transportation infrastructure (public roads, railways, tramways, etc).





## NEW ATHENS LIGHT RAIL TRANSIT - A DESIGN-BUILT PROJECT

Transportation, Structural, Hydraulics, Geotechnical Services



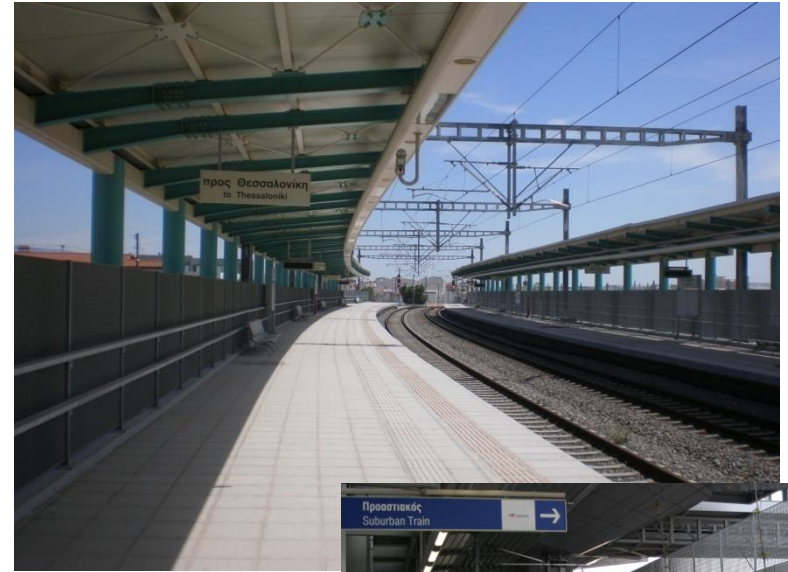
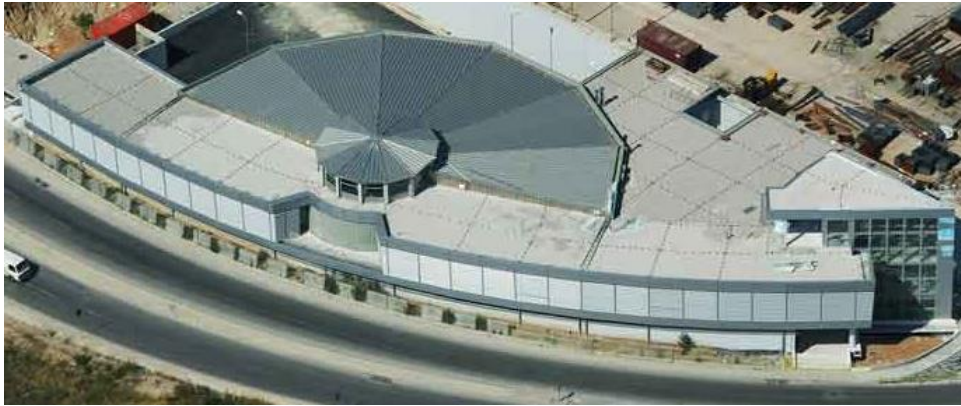


**Athens TRAM - Extension to Voula**  
 Transportation, Traffic Arrangements, Signage, Structural, Hydraulics,  
 Geotechnical Services



**Athens TRAM - Extension to Piraeus**  
 Traffic, Topo-survey, Structural, Hydraulic Services

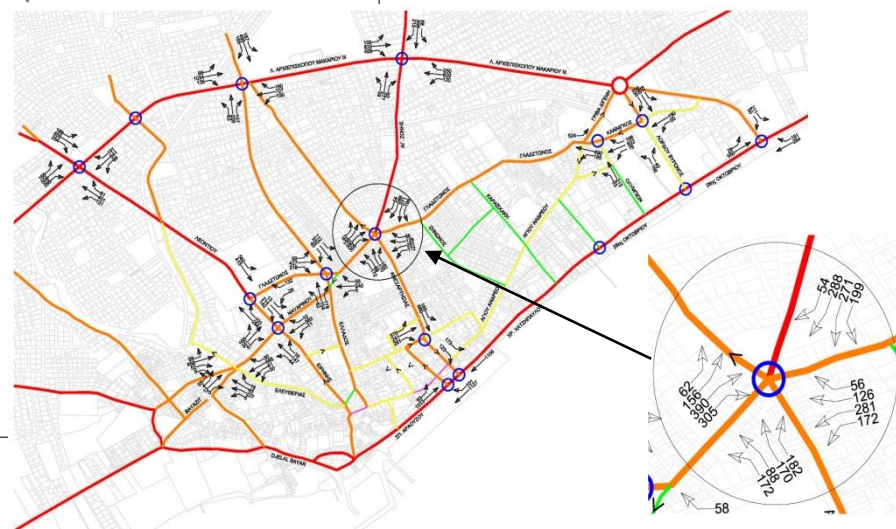
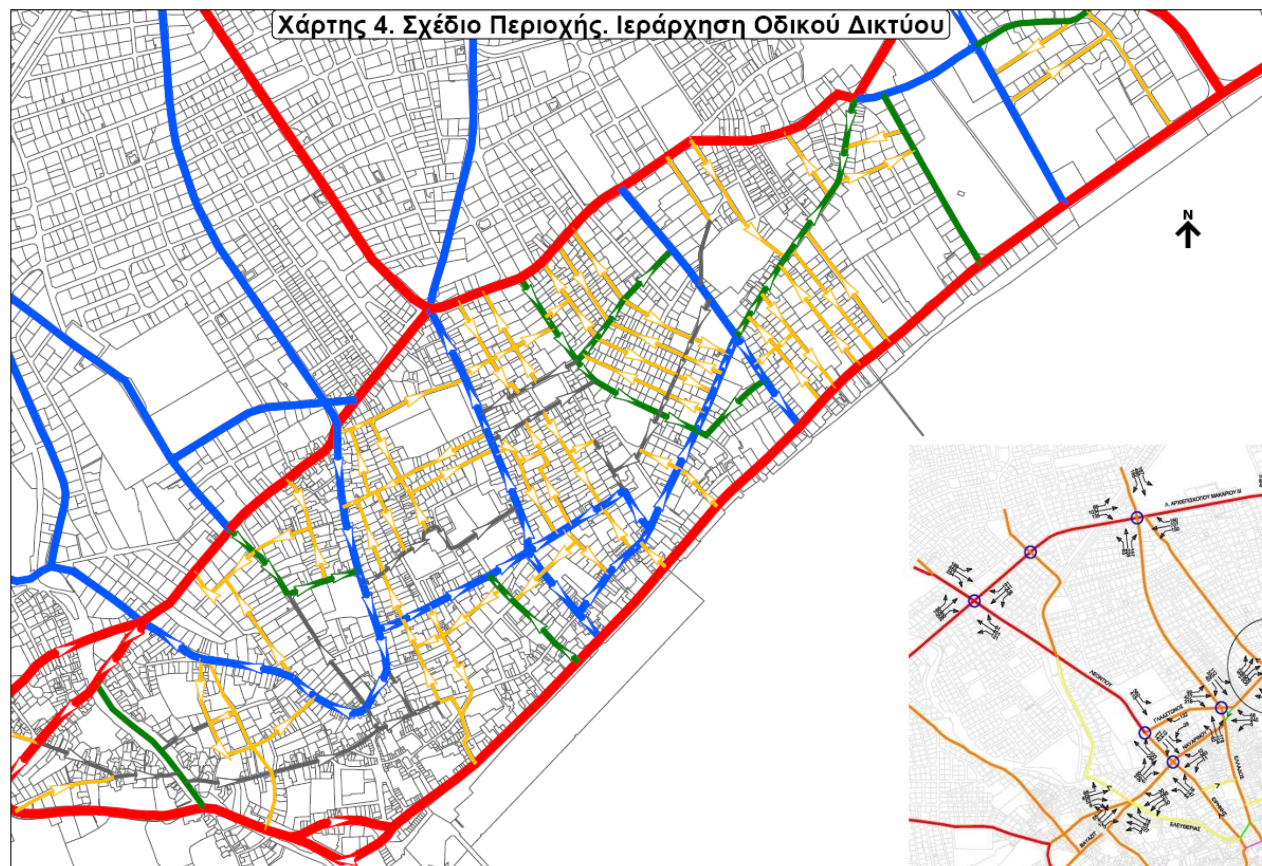




Design and Build infrastructure works of the four-line corridor at the section between the Three Bridges and the Acharnes Railway Centre (ARC)  
**NEW ATHENS SUBURBAN RAILWAY**

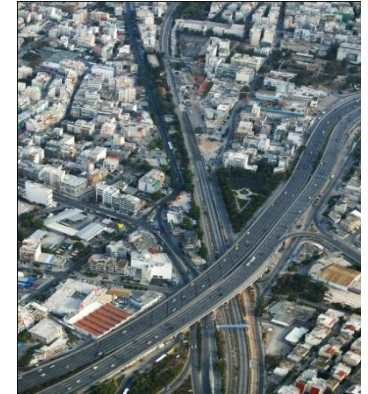
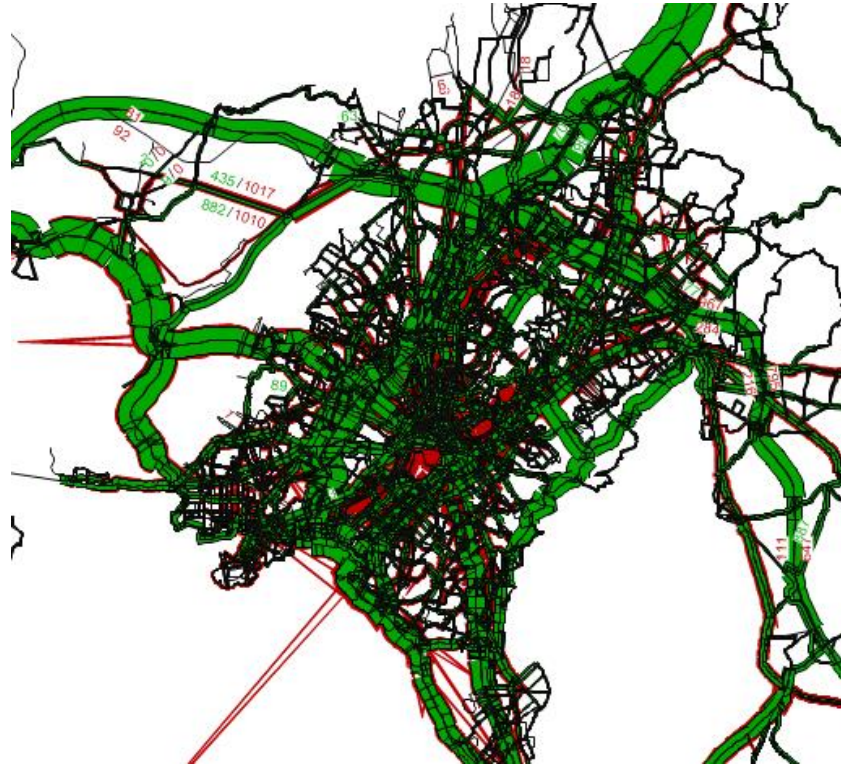
Transportation, Structural, Hydraulics, Geotechnical Services





## Traffic Study of Limassol Central Area in View of the Opening of the Technological University of Cyprus

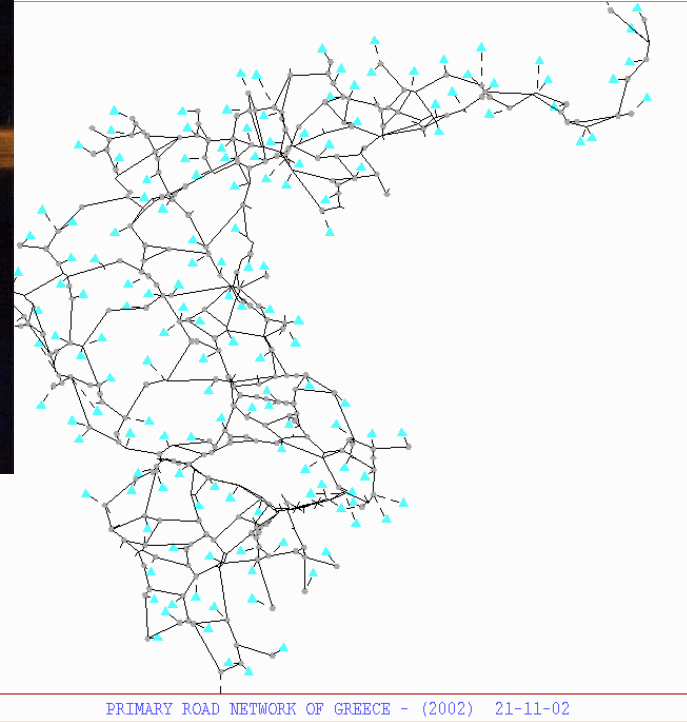
Traffic Analysis Services



## Attica Public Transport Master Plan

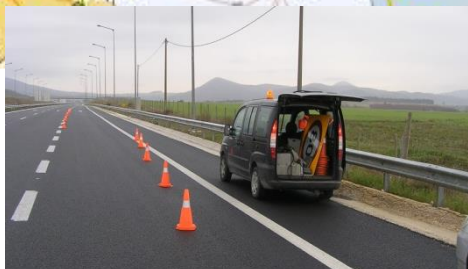
Transportation Planning/Modelling, Public Consultation, Development of Transport Plans





## **Traffic Advisor for the Greek State for the Implementation of the Concession Motorways Programme**

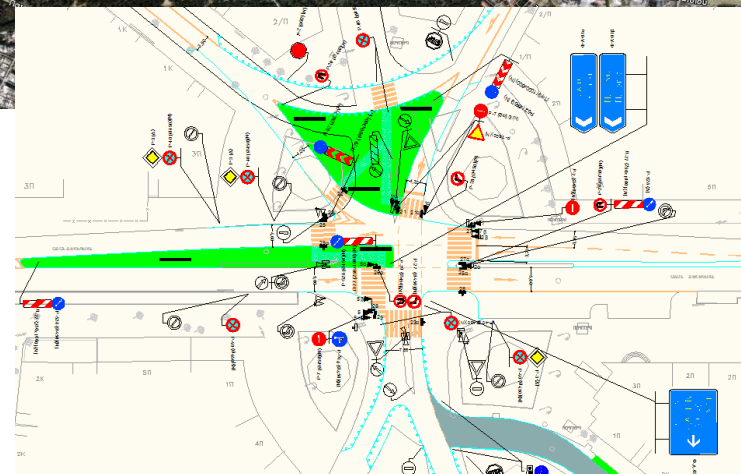
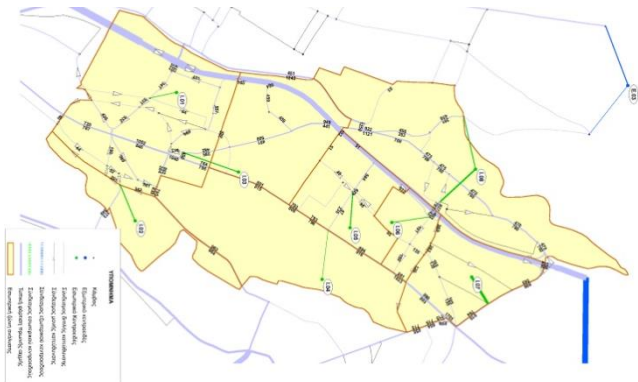
Transportation Planning/Modelling, Revenue Forecasting, Toll Strategy



## Development of freight, transborder, intermodal and alternative transport Indices for Egnatia Motorway Observatory

Transportation Services





## Traffic and Parking Management Study for the Municipality of N. Filadelfeia

Traffic and Parking Services



**Management of the Peak Traffic in the Motorway  
and National Road at Section Kinetta – Dafni**



**Traffic Management Systems of Greek Motorways –**  
Design of a New Traffic Data Collection & Monitoring System



**Motorway PATHE**  
**Section Ag.Theodoroi – Diylistiria**  
Traffic, Transportation, Structural Services





## Traffic studies for interchanges at Gaborone of Botswana

Transport, Technical Consultant Services



## Railway Line Athens-Thessaloniki - Section Tithorea-Domokos

Transport, Structural, Hydraulic & Geotechnical Services





**Arahtos, Egnatia Highway**

Structural Services



**“Greveniotikos” Valley Bridge, Egnatia Highway**

Structural Services



**“Megalorema”, Egnatia Highway**

Structural Services



**“G4” Valley Bridge, Egnatia Highway**

Structural Services





**Demir Kapija- Smokvica Bridges, North Macedonia**  
Structural Services





**Cable-Stayed Footbridge, Piraeus - Greece**  
Structural Services

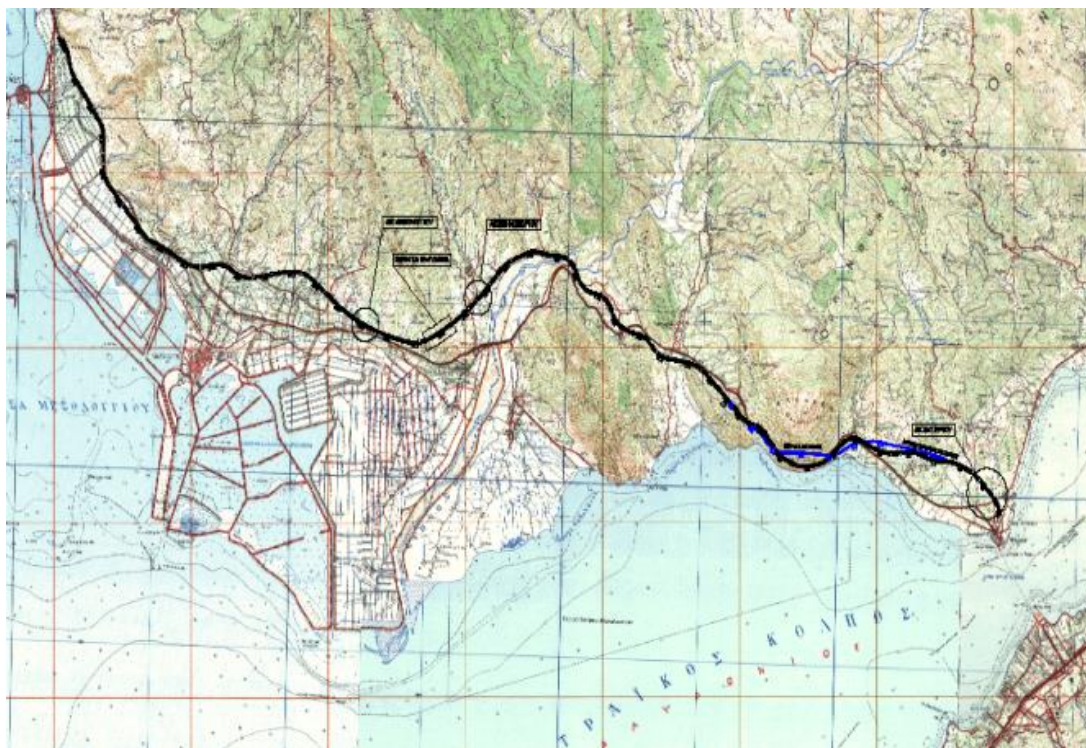


**FootBridge B1, Thessaloniki - Greece**  
Structural Services



**G3 Railway Bridge, Korinthos-Patra**  
Structural Services





**Preliminary design of Klokova's Bridge**  
CH. 7+379.00 – CH. 8+622.84  
(Ionia Odos Motorway)

## **Preparation of Designs for the Western Axis North-South Highway (Ionia Odos)- Section Antirrio- Kefalovryssso (42 km)**

Highway Design, Toposurveying, Structural, Environmental, Hydraulics, Geotechnical Services



**Toll Station & Motorway Operation,  
Aegean Motorway, Maliakos – Leptokaria**  
Structural Servives



**Toll Station & Motorway Operation,  
Aegean Motorway, Maliakos – Pirgetos**  
Structural Servives



**Toll Station & Motorway Operation,  
Moreas Motorway, Korinthos – Tripoli – Kalamata – Sparti**  
Structural Servives



# 5. TRANSPORT DESIGN

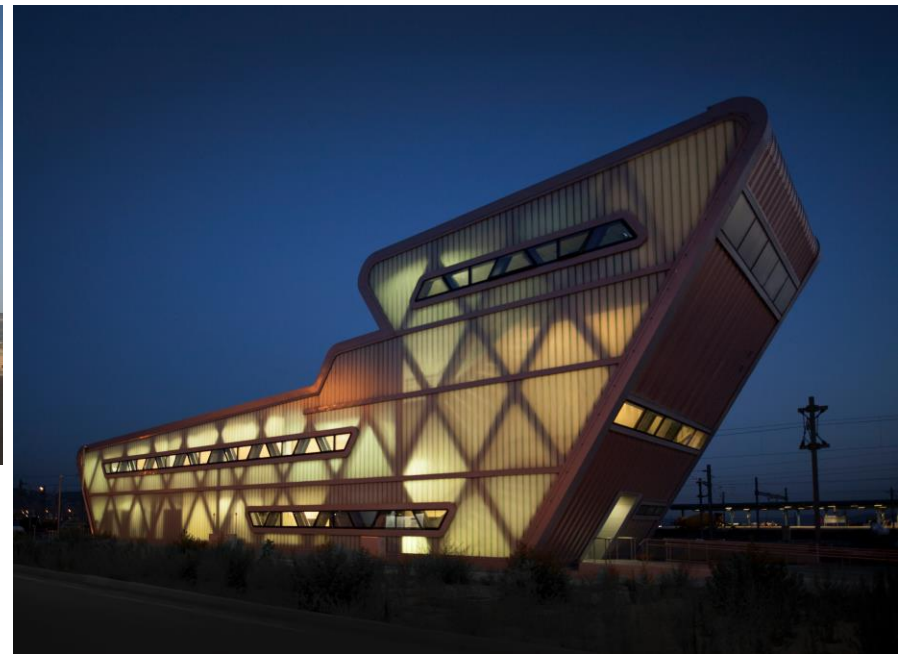
---

## 4. FREIGHT & PASSENGER CENTERS





**THRIASIO – Freight Center – Elefsina**  
**3,500 x 500 m Greenfield site**  
**33 buildings // total area: 304.494 m<sup>2</sup>**  
**Architectural Services**







**Interporto logistic Centre, Trento, Italy**  
**348.000 m<sup>2</sup>**  
**& SURROUNDING AREA 41.000 m<sup>2</sup>**  
Architectural Services







**ATESINA ITALY**  
Architectural Competition **1<sup>st</sup> PRIZE**  
Architectural Services





**KAT METRO STATION**  
Architectural Services

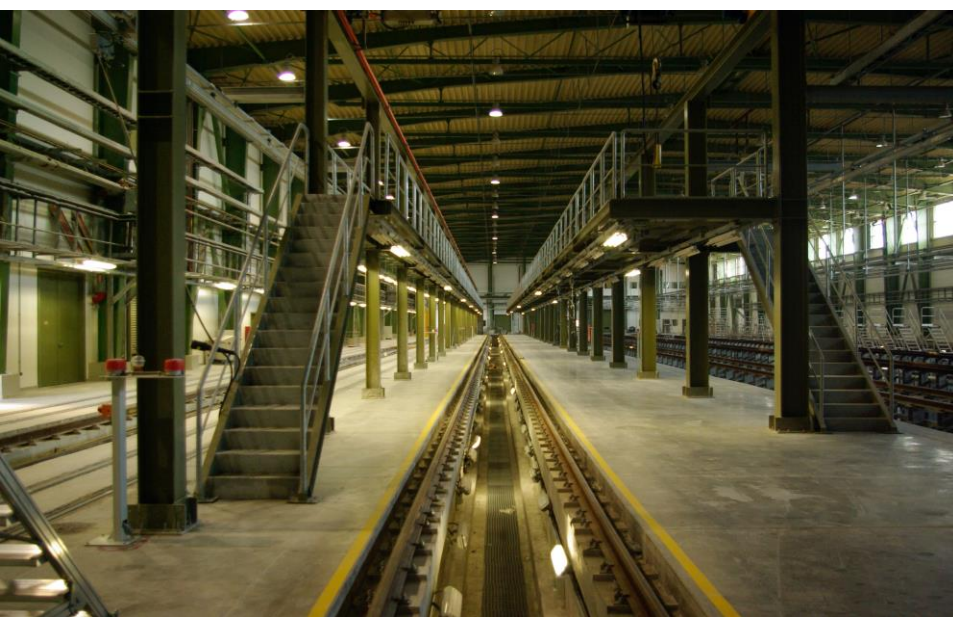


**TAVROS METROSTATION**  
Architectural Services

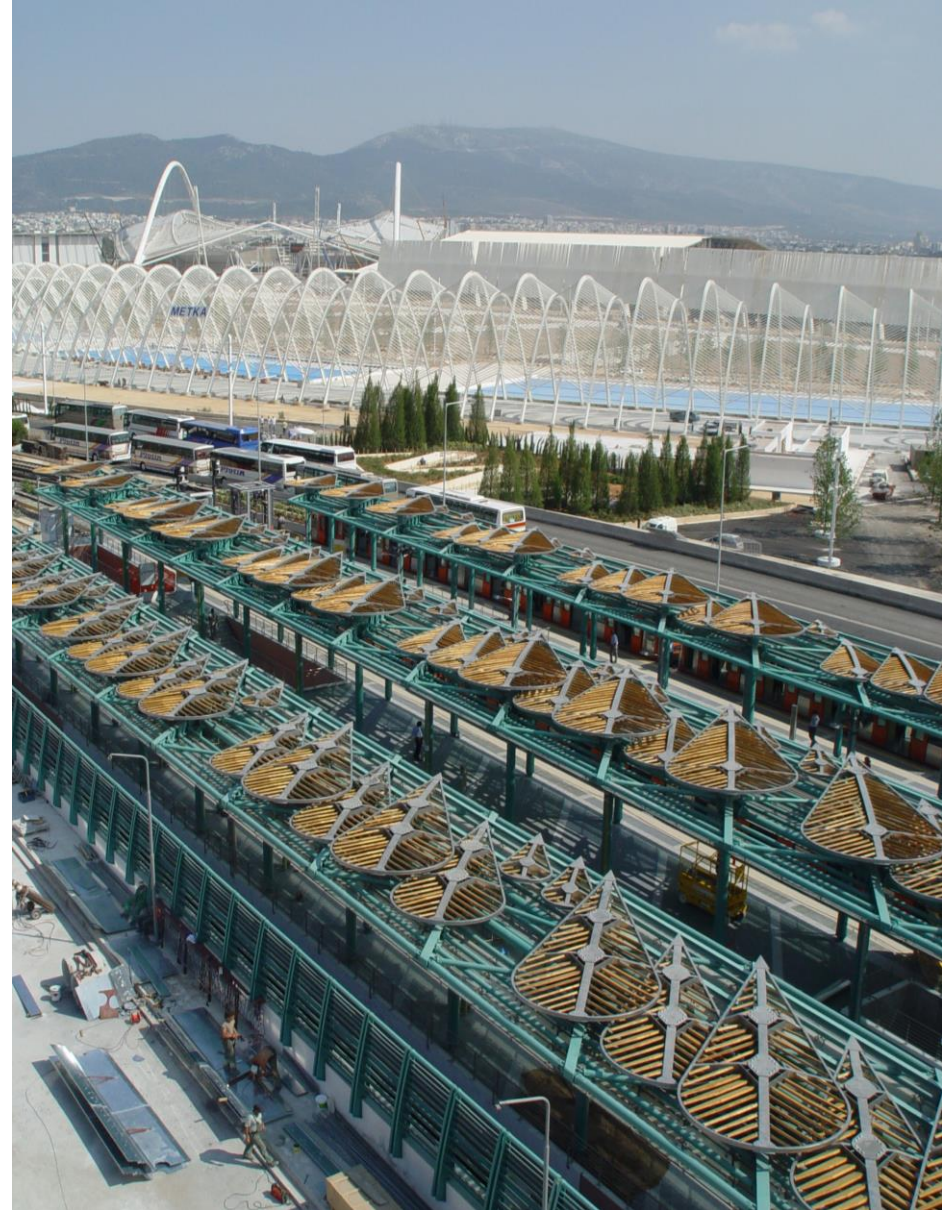




**Railway Station "NERAZIOTISA", Athens Greece**  
 Structural Services



**Metro Depot, Athens Greece**  
 Structural Services



**Railway Station "ERENE", Athens Greece**  
 Structural Services



# 6. RETAIL

---



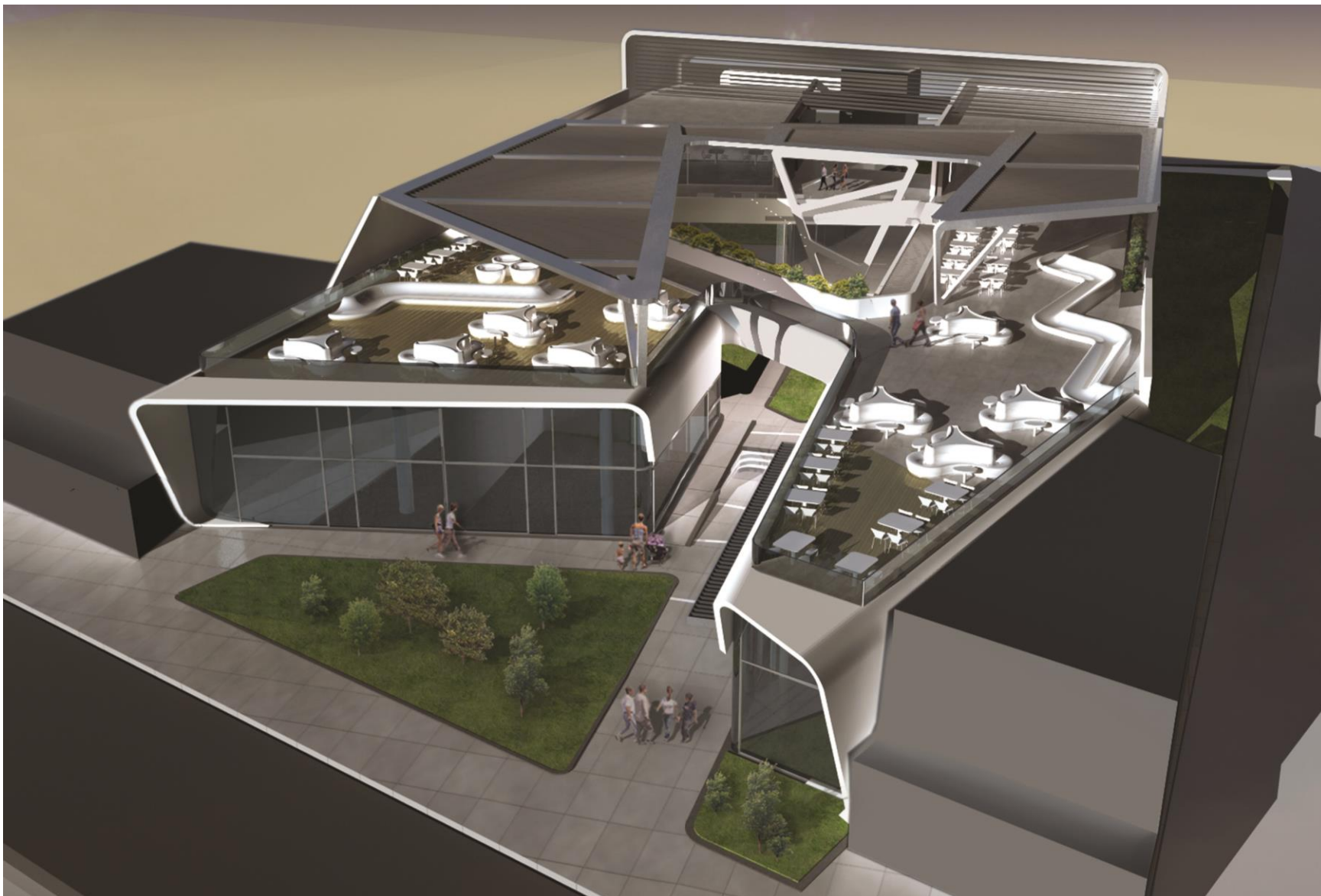
**We have successfully implemented more than 40 big retail chain projects including telecommunication shops for OTE (300 shops & 150 shops), Fashion retail shops etc.**



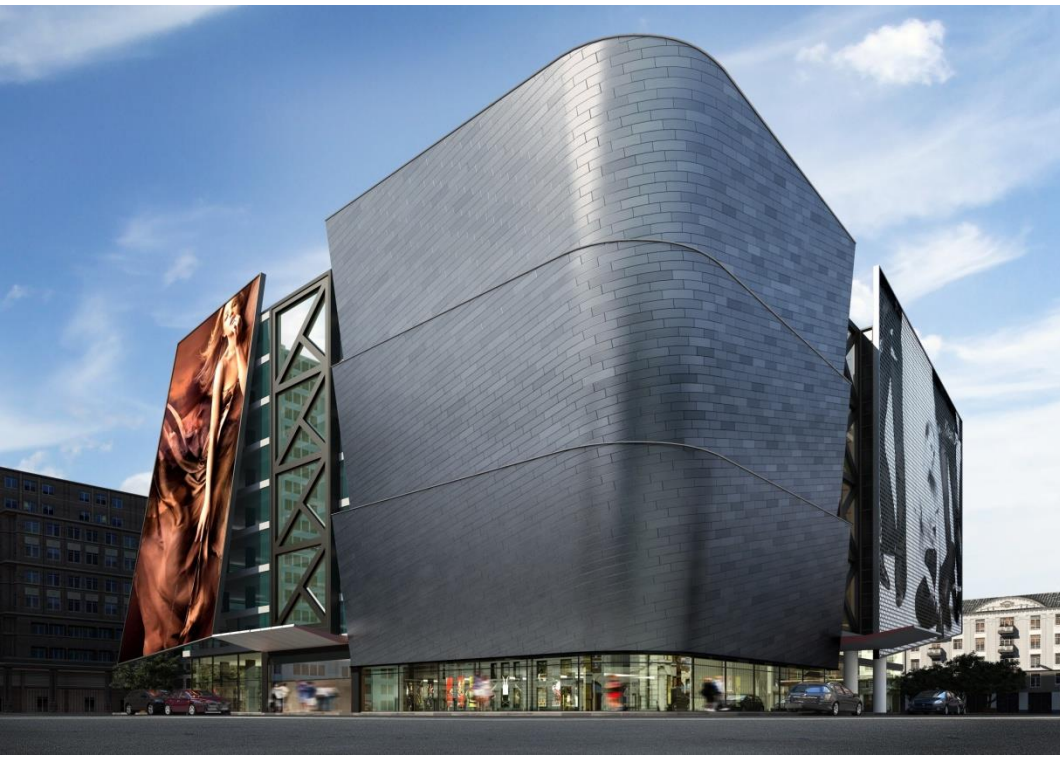
**Observatory Concept Store**  
Shortlisted for the FX International Awards 2007  
Architectural & Electromechanical Services

SHOPPING

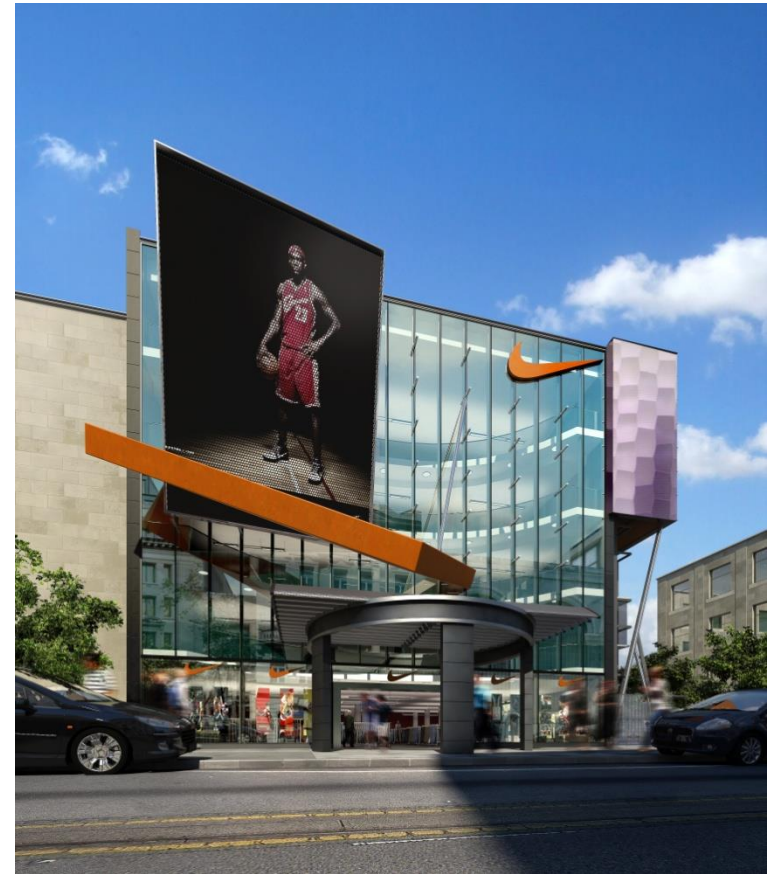




**New Shopping Center at Platanias of Chania, Greece**  
Architectural Competition - Architectural Services



**Minion Shopping Mall, Greece**  
Architectural Competition - Architectural Services



**MIKE Showroom, Greece**  
Architectural Services





**Factory Outlet at El. Venizelos, Greece**  
Electromechanical Services



**Mexx Shopping Center, Greece**  
Electromechanical Services



**"Mediterranean Cosmos", Thessaloniki - Greece**  
Electromechanical Services



**ARINI S.A., Psychico - Greece**  
Electromechanical Services





**Golden Hall, Marousi - Greece**  
Structural Services





# 7. EDUCATION

---





## Educational Facilities in Romania Architectural Services

Sibraxis is involved in numerous projects related to educational facilities, ranging from nursery schools to universities.

We have taken part in the design of more than 20 educational facilities in Greece and Romania.





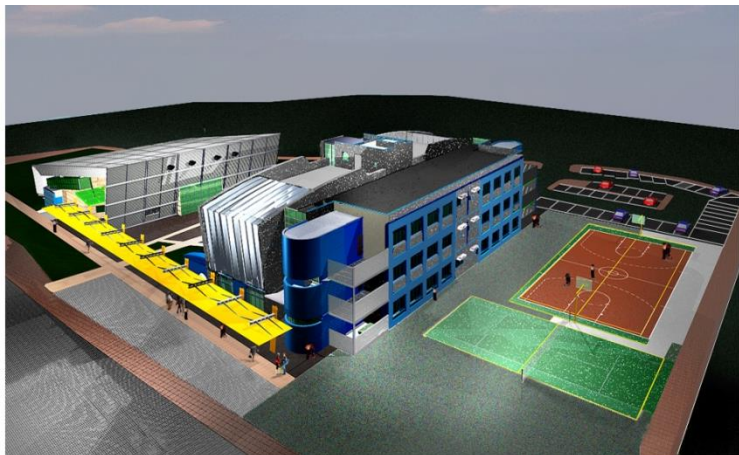
**Department of Biological Sciences & Common  
Teaching Facilities in Cyprus**  
Architectural Services





**Greek School in Munich- Germany**  
Structural, Geotechnical Services





**Technological Educational  
Institutes in Greece**  
Architectural Services



**European Centre for the Development of  
Vocational Training, Thermi, Thessaloniki**  
Architectural Services





**5<sup>th</sup> Ano Liossia Primary School, Panorama - Greece**  
Structural Services

**Galatsi Nursery School - Greece**  
Structural Services







**Athens School of Fine Arts, Greece**  
Electromechanical Services



**University of Aegean, Rhodes - Greece**  
Electromechanical Services



**Moraitis Nursery School, Athens - Greece**  
Electromechanical Services

# 8. HOTEL & LEISURE

---



SIBRAXIS has been part of the design schemes of  
**more than 85 Tourism projects and Hotel complexes throughout Greece.**





**TWO WELLNESS RESORTS 5\* & 5\*plus, Rhodes - Greece**  
Architectural Services





HOTEL & LEISURE

**TWO WELLNESS RESORTS 5\* & 5\*plus, Rhodes - Greece**  
Architectural Services

 **SIBRAXIS**





**PETER's and PAUL's WELLNESS & LIFESTYLE VILLAGE, Laconia - Greece**  
Architectural Services

HOTEL & LEISURE





HOTEL & LEISURE

**LUXURY 6\* RESORT, Rhodes - Greece**  
Architectural Services

 **SIBRAXIS**





**HOTEL ATHENS IMPERIAL, Athens - Greece**  
Architectural Project Management

HOTEL & LEISURE

Project Manager: Kiara Sebesta in collaboration with the architectural office of Mr. P. Liakos

 **SIBRAXIS**



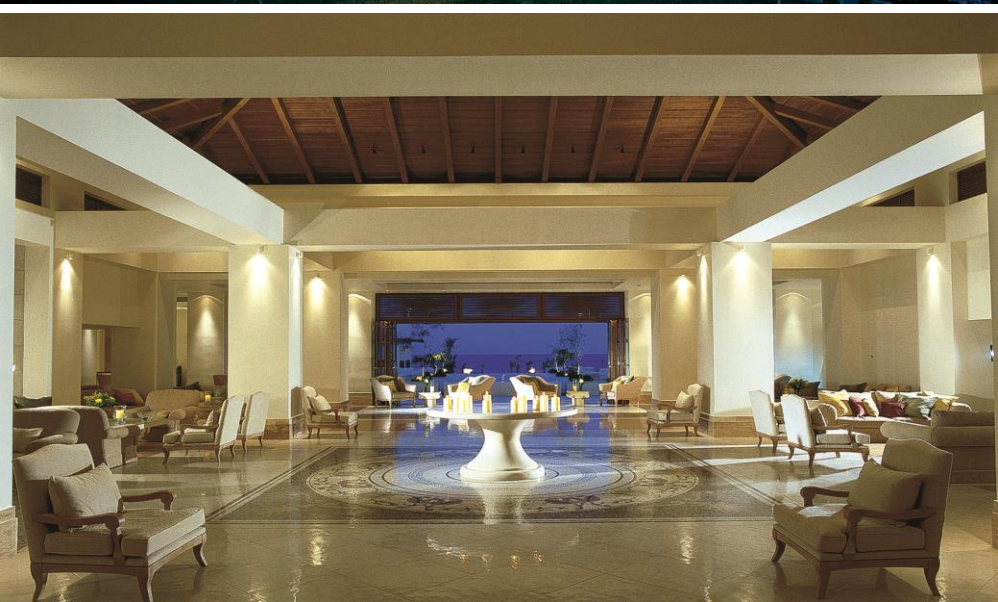


**HOTEL ATHENS IMPERIAL, Athens - Greece**  
Architectural Project Management

HOTEL & LEISURE

Project Manager: Kiara Sebesta in collaboration with the architectural office of Mr. P. Liakos





**HOTEL KOS IMPERIAL THALASSO, Kos - Greece**  
Architectural Project Management

HOTEL & LEISURE

Project Manager: Kiara Sebesta in collaboration with the architectural office of Mr. P. Liakos





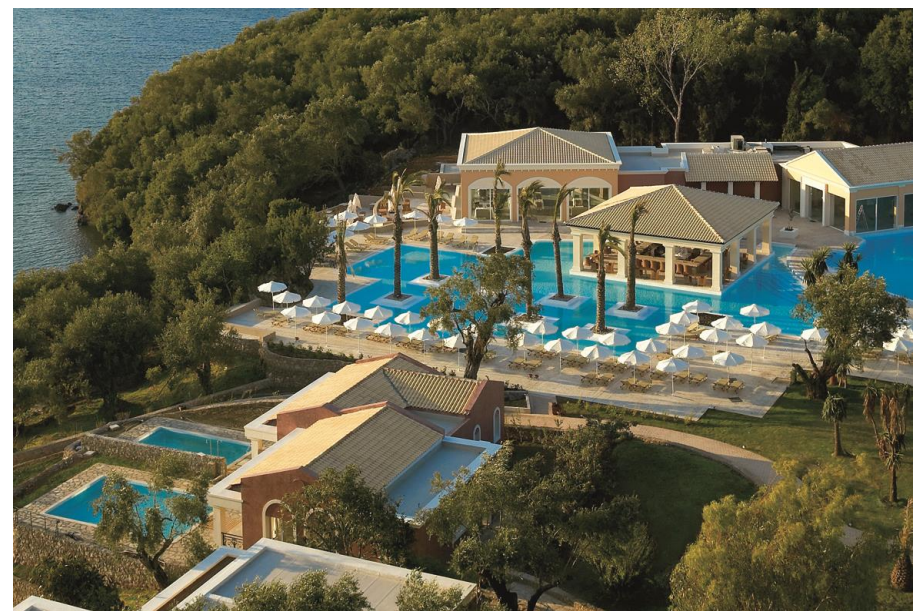
HOTEL & LEISURE

**AQUA BLUE BOUTIQUE HOTEL & SPA, Kos - Greece**  
Architectural Project Management

 **SIBRAXIS**

Project Manager: Kiara Sebesta in collaboration with the architectural office of Mr. P. Liakos





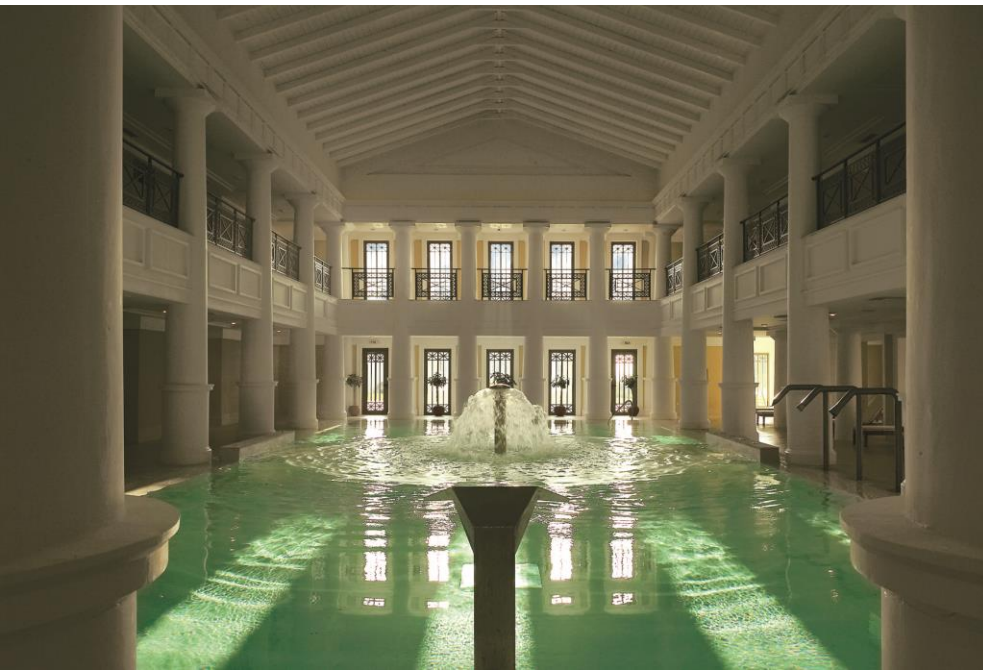
## HOTEL & LEISURE

**EVA PALACE, Corfu - Greece**  
Architectural Project Management



Project Manager: Kiara Sebesta in collaboration with the architectural office of Mr. P. Liakos





HOTEL & LEISURE

**OLYMPIA RIVIERA RESORT, Peloponissos - Greece**  
Architectural Project Management

 **SIBRAXIS**

Project Manager: Kiara Sebesta in collaboration with the architectural office of Mr. P. Liakos





**IXIAN GRAND, Rodos - Greece**  
Architectural Project Management

## HOTEL & LEISURE

Project Manager: Kiara Sebesta in collaboration with the architectural office of Mr. P. Liakos





**HOTEL PELAGOS, Kos - Greece**  
 Architectural Project Management



**SAHARA RESORT & RESINDENCES, Libya**  
 Architectural Project Management



**HOTEL DAMASCUS, Syria**  
 Architectural Project Management



# HOTEL & LEISURE

Project Manager: Kiara Sebesta in collaboration with the architectural office of Mr. P. Liakos





**HOTEL AKTI DORETA, Rhodes - Greece**  
 Architectural Services



**HOTEL LINDIAN VILLAGE, Rhodes - Greece**  
 Architectural Services

HOTEL & LEISURE





**San Stefano Hotel Complex, Corfu - Greece**  
Electromechanical Services



**DU LAC Hotel & Congress Center,  
Ioannina - Greece**  
Electromechanical Services



**Oxia Art Island  
Oxia, Greece**  
Electromechanical Services





**Casino Hôtel Delle Roses, Rhodes - Greece**  
Electromechanical Services



**SOFITEL, Athens - Greece**  
Electromechanical Services



**Hotel Montana**  
**Karpenissi, Greece**  
Electromechanical Services





**FRESH Hotel , Athens - Greece**  
Electromechanical Services



**“The MET” Hotel, Thessaloniki – Greece**  
Electromechanical Services



**Elefsina Hotel, Greece**  
Electromechanical Services

**75 Cabanas at Astir Palace  
Vouliagmeni, Greece**  
Electromechanical Services







**“W ATHENS” at Astir Palace Vouliagmeni, Greece**  
Electromechanical Services



**“ARION” at Astir Palace Vouliagmeni, Greece**  
Electromechanical Services



**“MATSUHISA” at Astir Palace Vouliagmeni, Greece**  
Electromechanical Services



**Astir Palace Beach Vouliagmeni, Greece**  
Electromechanical Services





**«PLEIADON GI» Hotel Complex at Trikala Korynthias,  
Greece**  
Electromechanical Services



**Astir Hotel & Congress Centre at Alexandroupoli, Greece**  
Electromechanical Services

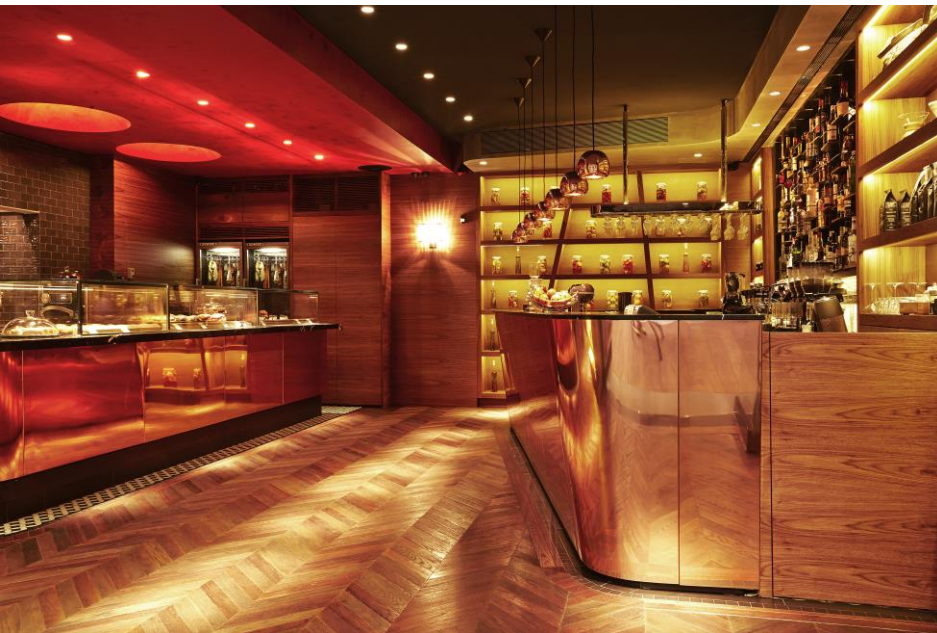


**4 Star Hotel Complex at  
Lakopetra, Greece**  
Electromechanical Services



**Antrina 5 Star Hotel  
Complex in Skopelos,  
Greece**  
Electromechanical Services





**City Restaurant & Bar in Athens, Greece**  
Architectural Services





**Multiplex Cinema Complex , Qatar**  
Architectural Services





**New Messhall, Bakery & Ancillary Buildings in Marsa  
El Brega, Libya  
Architectural Services**



**Zonars Bistro, Athens - Greece  
Architectural Services**

**Astir Matsuhitsa Restaurant, Vouliagmeni – Greece**  
Electromechanical Services



**Ombria Wine Bar Café & Restaurant, Athens - Greece**  
Electromechanical Services

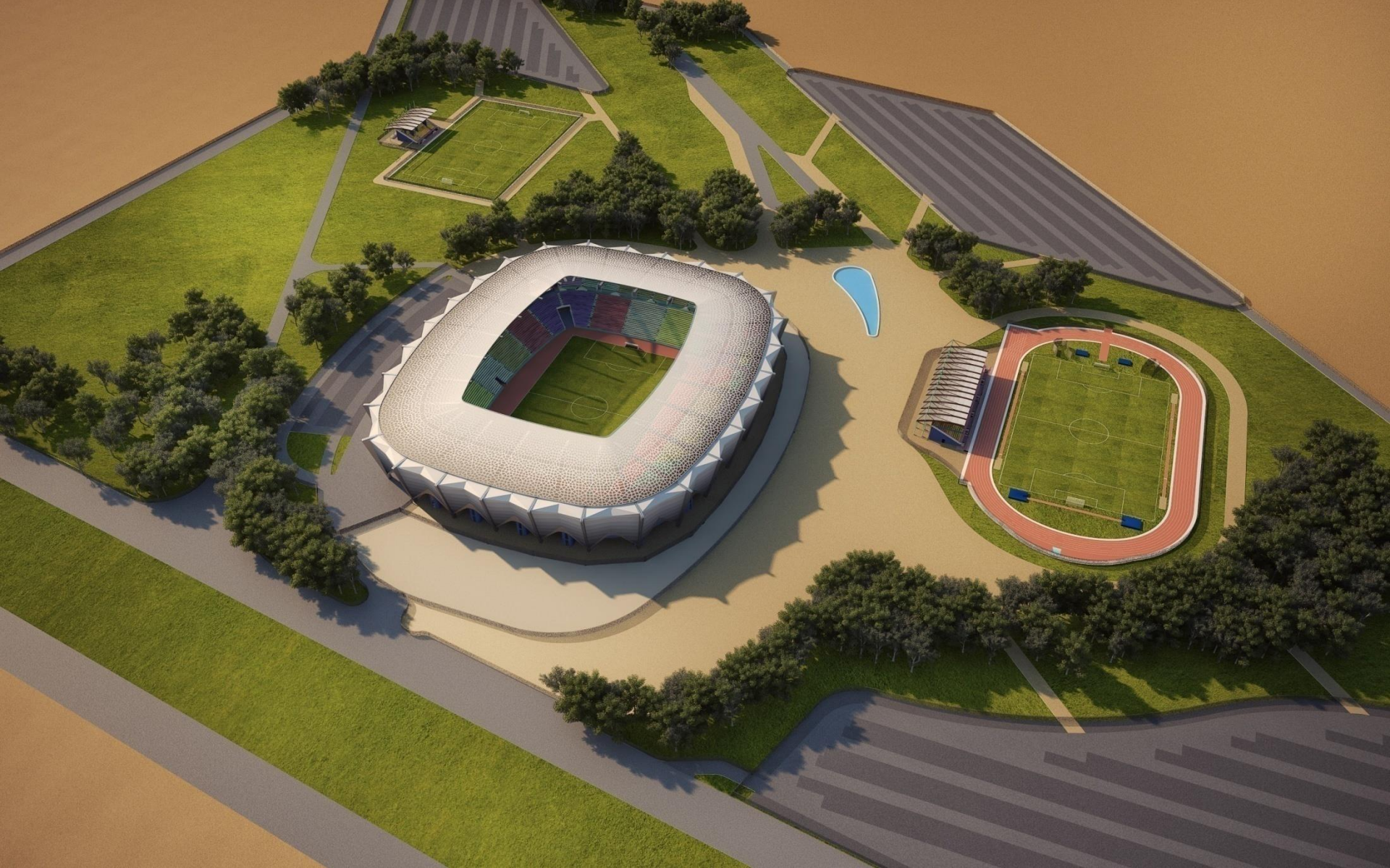


# 9. SPORT FACILITIES

---

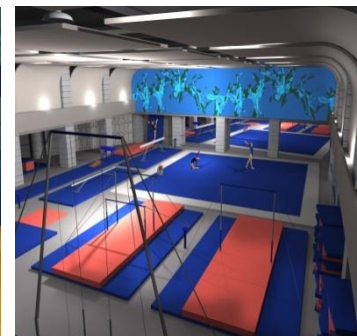
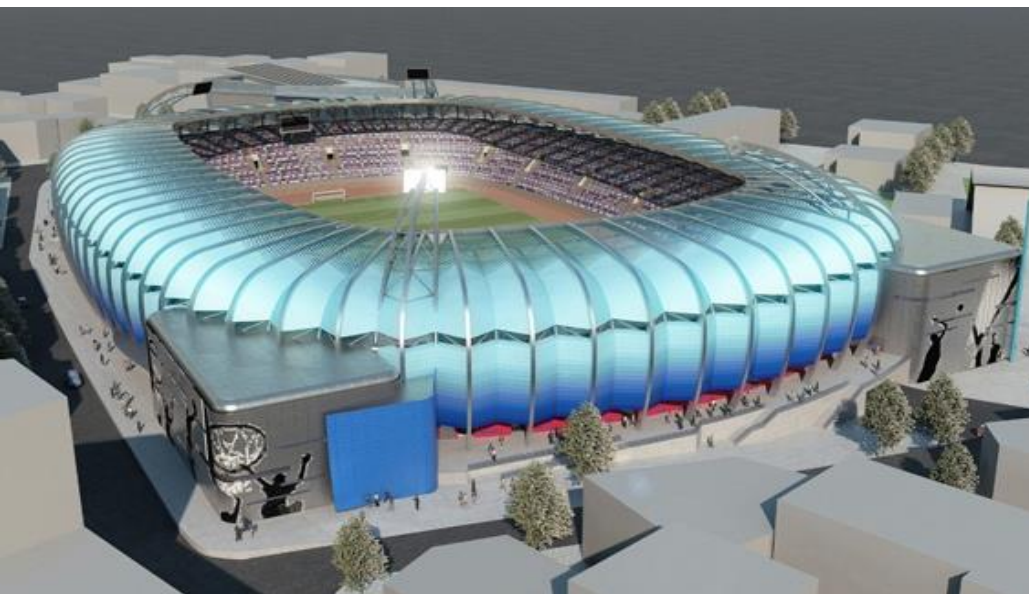


**SIBRAXIS has a significant experience in the field of SPORT FACILITIES design.**



**Stadium in Al-Rusafa, Iraq**  
**30.000 – 2.000 – 500 spectators**  
**International Competition - Architectural - E/M - Structural Services**





**New Stadium for Panionios GSS**  
**13.000 spectators**  
**Architectural Services**





**Covered Stadium in Karditsa, 3000 seats**  
Architectural Services





**Domed Stadium of T.E.I. Heraklion**  
1835 seats & 350 mobile seats  
+ multipurpose room and 250-seat cafeteria  
**Architectural Services**







**Indoor Basketball Court, Athens - Greece**  
Architectural Services





**New Sport Center in Pantelleria, Italy**  
Architectural Services



**Olympic Aquatic Center in the Olympic Athletic  
Center of Athens "Spiros Louis", Greece**  
Electromechanical Services





**New PAS GIANNINA Stadium, Ioannina - Greece**  
Structural Services



**New Panathinaikos FC Stadium, Athens - Greece**  
Structural Services



**Ano Liossia Swimming Pool Center, Athens- Greece**  
Structural Services



**Ano Liossia Zofria Indoor Basketball Arena, Greece**  
Structural Services





**Olympic Indoor Sports Center, OAKA - Greece**  
Electromechanical Services



**'KARAIKAKI' Olympiakos FC Stadium, Athens - Greece**  
Structural Services



**"AEK" New FC Stadium, Athens- Greece**  
Structural Services



**"AEL" New FC Stadium, Larissa - Greece**  
Structural Services





## Olympic Equestrian Center and New Horse Racetrack of Athens

The study concerns the construction of a complex project, which covers the needs of the Olympic Games (Olympic Equestrian Centre) and the needs of the New Horse Racetrack of Athens. It is developed in an area of 2,150 stremma and it is designed to serve 17,250 persons (visitors and permanent staff) and 2,328 horses. Roadworks, Urban road network of 13 km length and horse-roads of 5km length, Parking area of 162,000 sqm, Signage study, Tracing of the horse racetrack of a length 2.7 km Water Supply Network, Irrigation and Fire Extinguisher Network. Sewerage, Wastewater collection transmission treatment and disposal works. Wastewater Treatment Plant comprising preliminary treatment biological treatment. Storm water management system. Drainage systems for a total area of 250,000 m<sup>2</sup>.





## Olympic Sailing Center of Agios Kosmas

The intergraded study of the Olympic Sailing Center, as indispensable part of the Olympic Facilities so that the yacht races to take place within the frame of the Olympic Games, was a multifarious design objective with particular technical and functional requirements and important time engagements.

The project included the study for the reformation of the existing jetty, the implementation of the necessary harbor works for its arming and protection from the waves, the construction of the basic infrastructure and buildings (over 13,500 m<sup>2</sup>). The area of the Olympic Sailing Center is about 450,000 sqm and the land space includes a coastal zone of about 800 m.

The design objectives covered were:

**Environmental Impact Assessment Study**

**Access and internal road design**

**Design of parking areas**

**Lighting and signaling study**

**Water supply and irrigation study**

**Sewerage study**

**Topo-survey study**



# 10. OFFICE DESIGN

---



SIBRAXIS has significant experience in the design of office buildings. We have successfully implemented more than **100 office buildings** around the world.





**ATENE Office Building, Greece**  
Architectural Services



**Astoria Office Building, Larissa - Greece**  
Architectural Services





**Bobotis+Bobotis Architects Office, Greece**  
Architectural Services





**DOL Office Building, Greece**  
Architectural Services



**Arena S.A. & Marena S.A. Office Building, Greece**  
Electromechanical Services



**Mesaoria S.A. Office Building, Greece**  
Electromechanical Services



**P & K S.A. Athens, Greece**  
Electromechanical Services





**Office Building at Marousi – Dionyssou Str., Greece**  
Structural Services



**Office Building at Marousi, Greece**  
Structural Services



**Olympic Tower, New York, USA**  
Electromechanical Services



**Anangel Shipping S.A., Greece**  
Electromechanical Services





**Aggemar Shipping, Athens - Greece**  
Electromechanical Services



**Olayan Shipping, Athens - Greece**  
Electromechanical Services



**OPAP gaming company, Athens - Greece**  
Electromechanical Services



**Onassis Foundation, Athens - Greece**  
Electromechanical Services





**Costa Mare Shipping, Athens - Greece**  
Electromechanical Services



**Exclusive Fashion Design Firm HQ, Athens - Greece**  
Structural Services



**Telecommunications company HQ, Athens - Greece**  
Structural Services



**NAMA Offices, Athens - Greece**  
Structural Services





**Botifin Piraeus Offices & Shops, Greece**  
Architectural Services





**Bank Data Processing Center, Athens**  
Structural Services



**Sarantopoulos Offices & Shops, Greece**  
Architectural Services

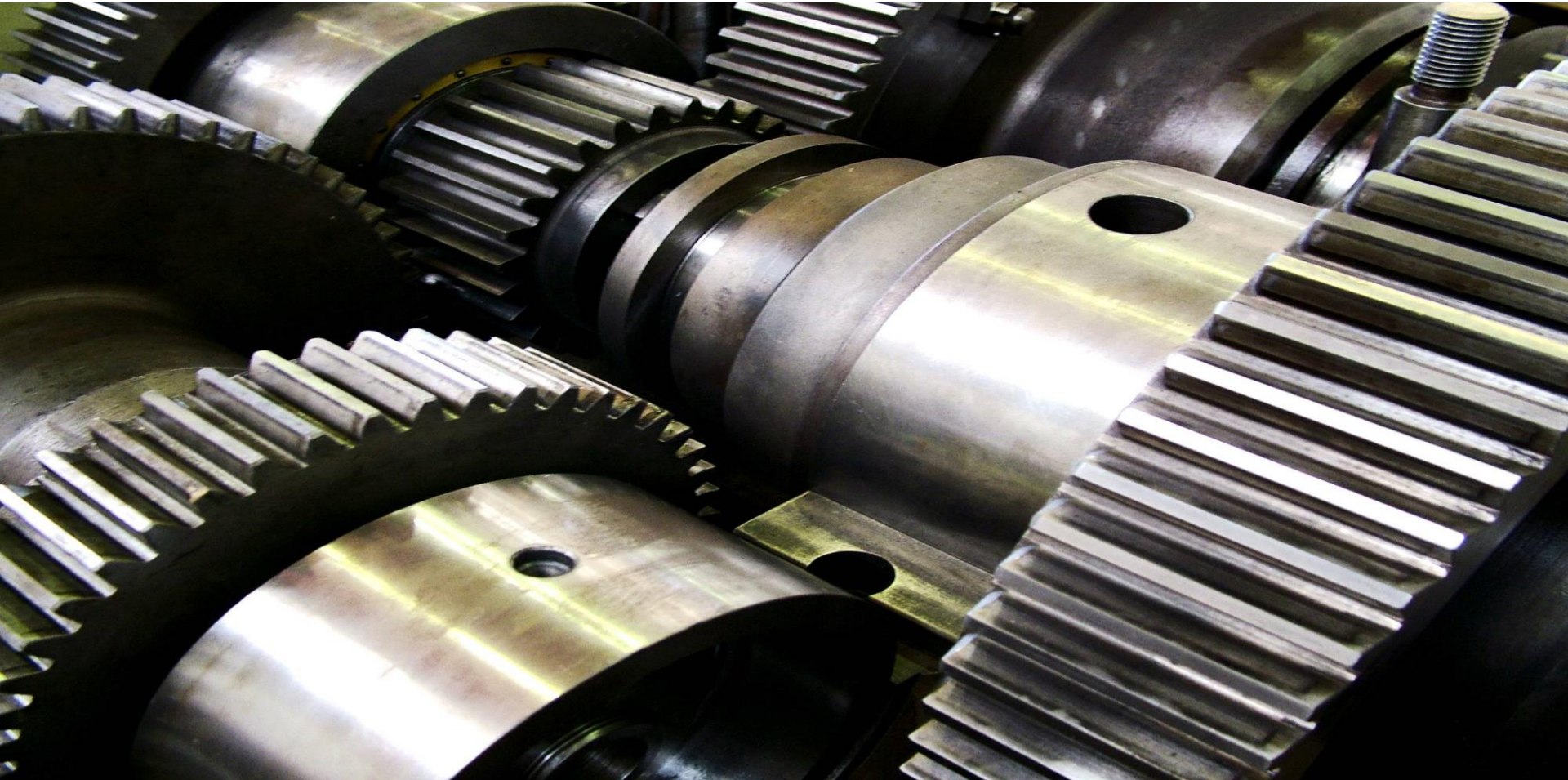


**SONY Music, Greece**  
Architectural Services



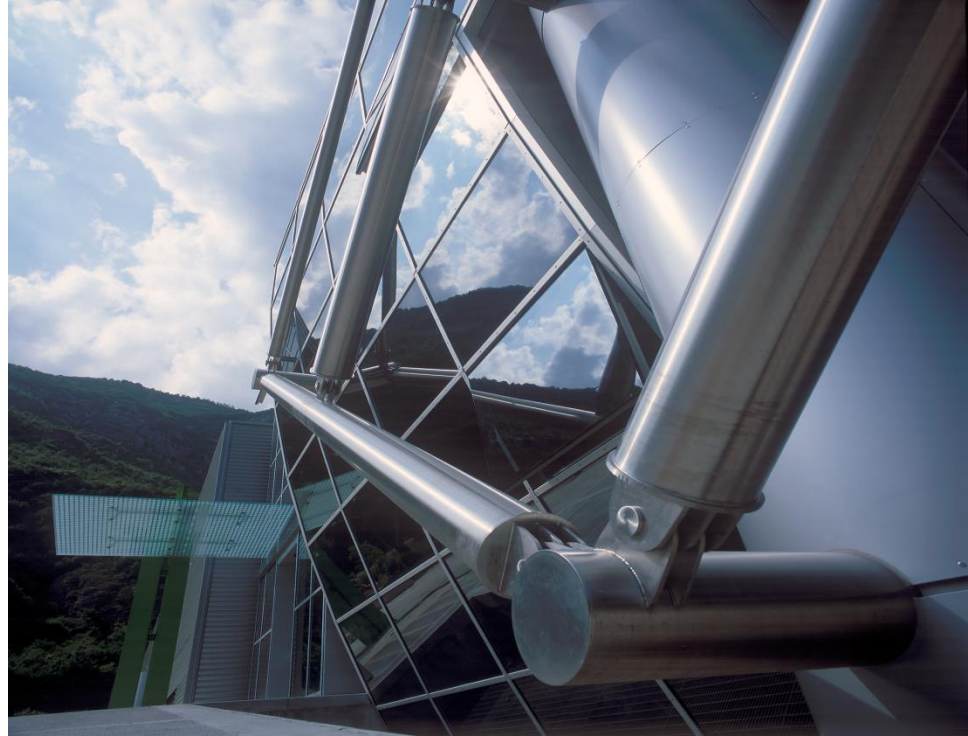
# 11.INDUSTRY & MANUFACTURE

---



We have successfully implemented **more than 80 projects regarding** the field of Industrial facilities in Greece, Italy, France, Libya, Tunis, Romania and Bulgaria.





**IGF**  
**Bookbinding Facilities in Trento,**  
**Italy**  
**Architectural Services**







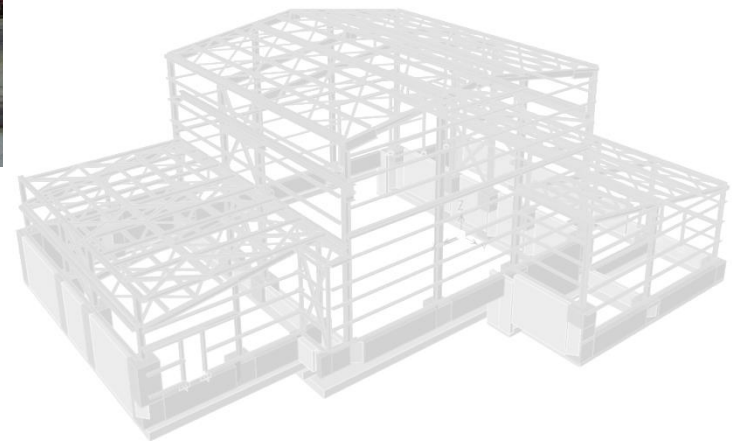
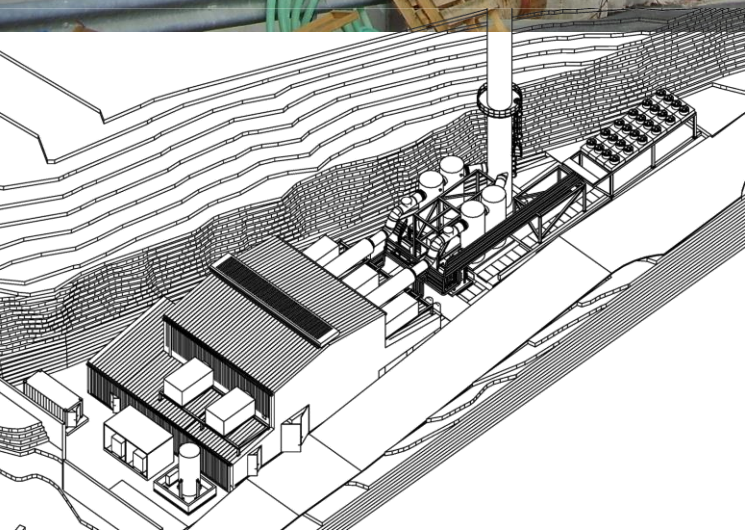
**WURTH HELLAS**  
Architectural Services

---

INDUSTRY & MANUFACTURING

 **SIBRAXIS**





**Combined heat and power station 15.5 MW at Revithousa Island**

**Structural – Geotechnical Services**

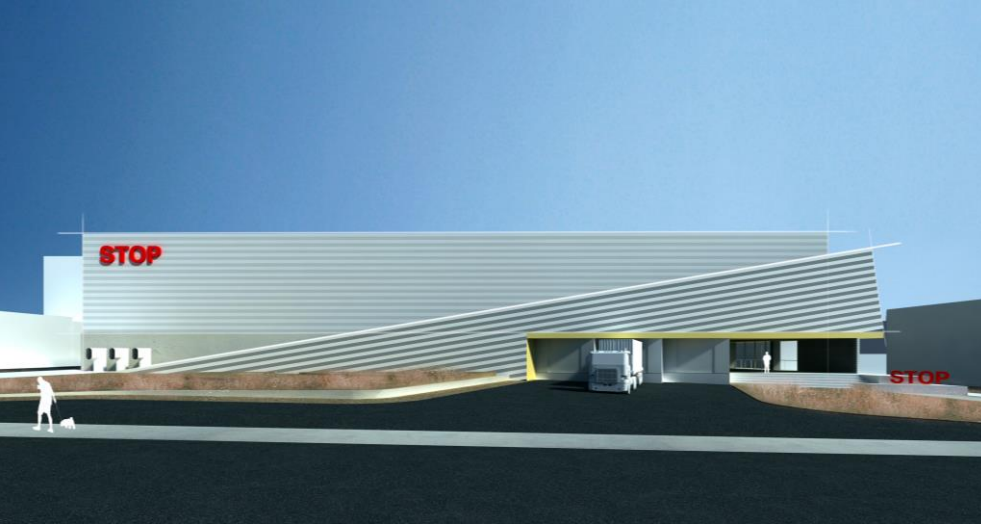


**Bottling Factory, Cave “Atalanti –  
Hatzimichali”, Greece**  
Electromechanical Services



**Wurth IT, Bolzano, Italy**  
Architectural Services





**STOP S.A. Building Complex(Warehouse, Factory,  
Offices & Residences), Piraeus - Greece**  
Electromechanical Services



**Violex BIC Industrial Complex, Attica - Greece**  
Electromechanical Services



**Eviop Packing Factory, Halkida - Greece**  
Electromechanical Services



**Iris Printing Facilities, Koropi - Greece**  
Electromechanical Services





**Solid Waste Treatment Plant at Serres (150.000 t/year incoming waste), Greece**  
Topographic, Geotechnical, Environmental, Structural, Transport, Hydraulic, E/M Services



**South Rhodes Power Station (120MW), Rhodes - Greece**  
Structural, Transport, Hydraulic Services

**5th Energy Station in Ptolemaida, Greece**  
Topographical Surveys, Mapping Services







**Mercedes Benz Hellas - Logistics, Markopoulo - Greece**  
Structural Services



**EVOBUS – Office & Service Centre, Koropi - Greece**  
Structural Services



**Warehouse & Show Room - Papapolitis, Markopoulo -Greece**  
Structural Services





**NKHP Grain Terminal in Mykolayiv Port, Ukraine**  
Technical Consulting Services



**Novotech's Grain Development Project in Odessa Port, Ukraine**  
Technical Consulting Services



**Bulqiza and the Barrel Ferrochrome Furnaces, Albania**  
Technical Consulting Services



# 12. MIXED USE COMPOUNDS

---



SIBRAXIS has been involved with some very interesting mixed use compounds projects. We have carried out around **10 compounds** in Greece and Romania.





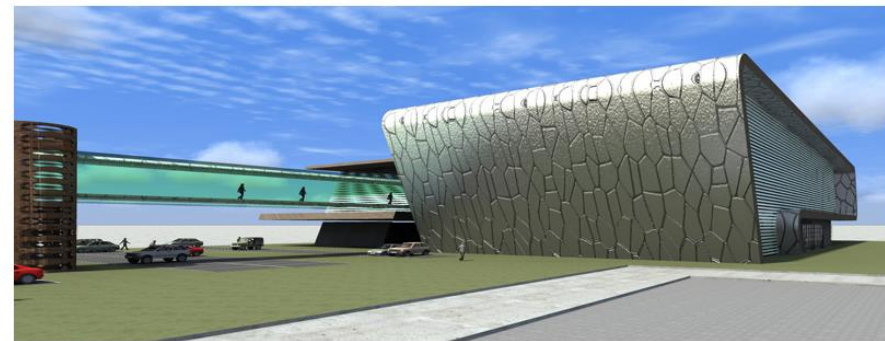
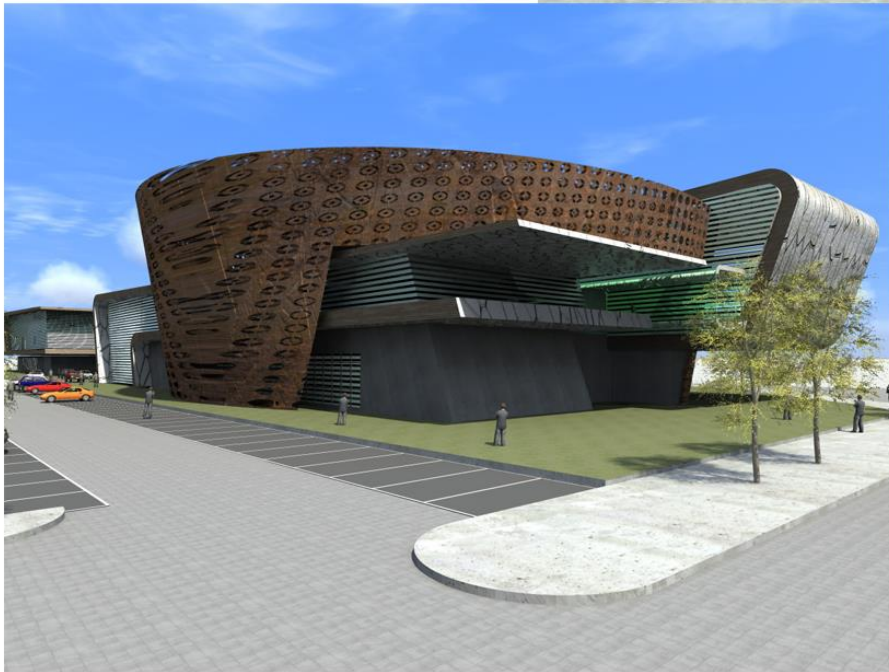
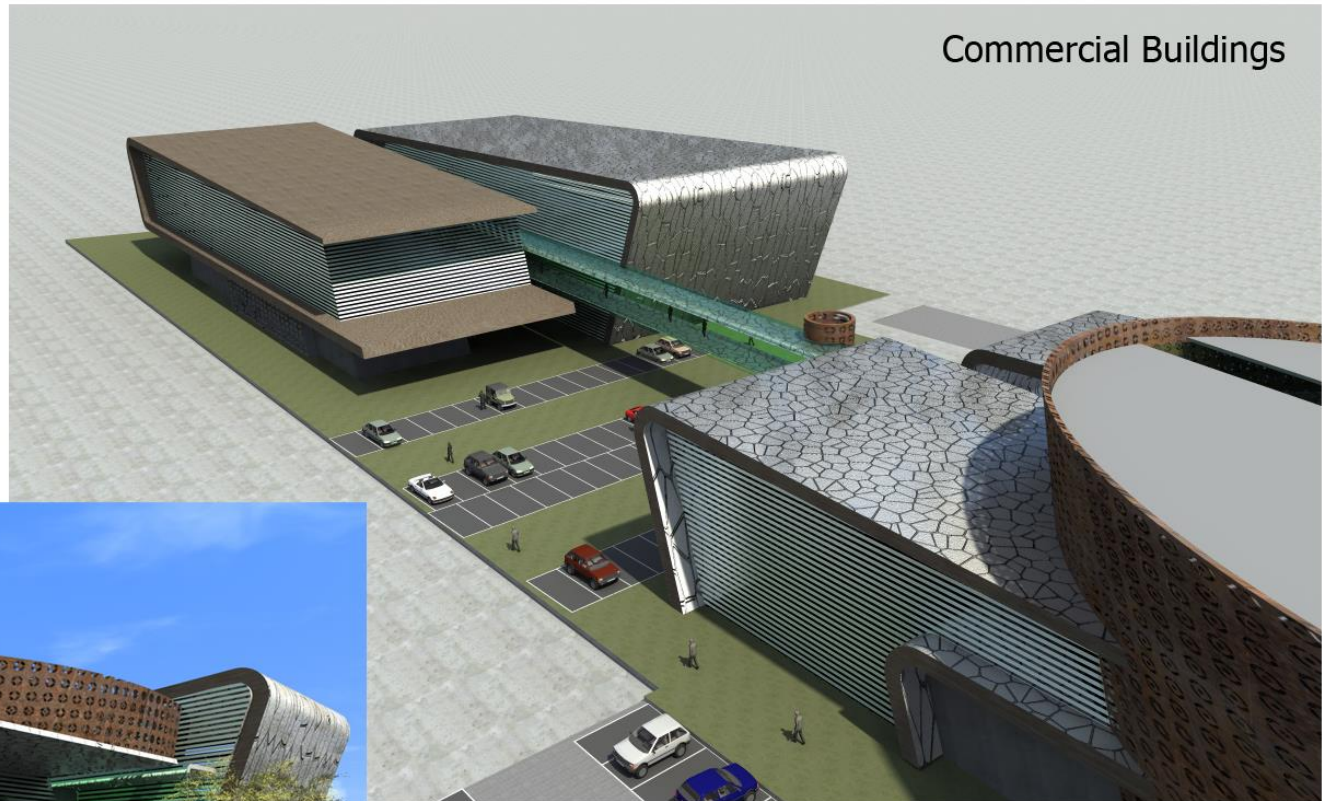
**“Crevedia” Residential Compound in ROMANIA**  
Architectural Services



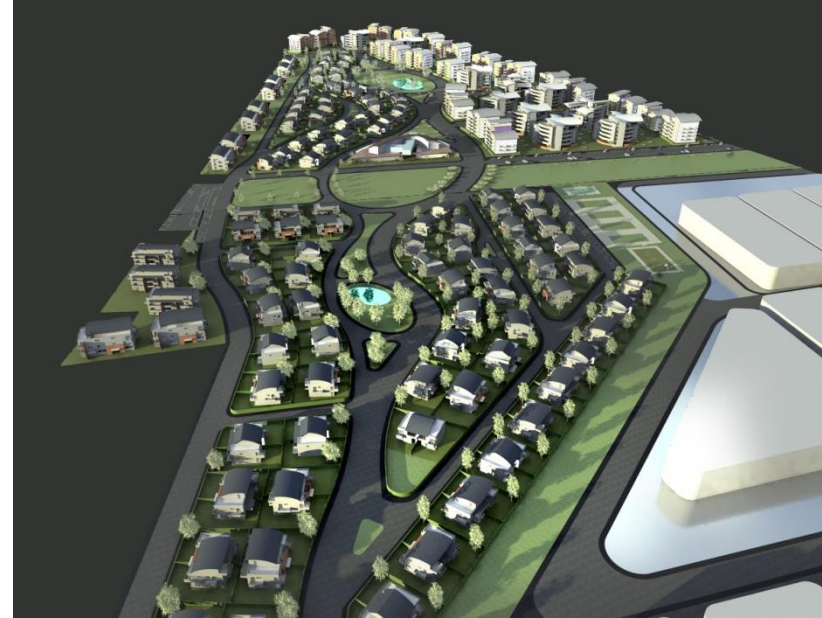
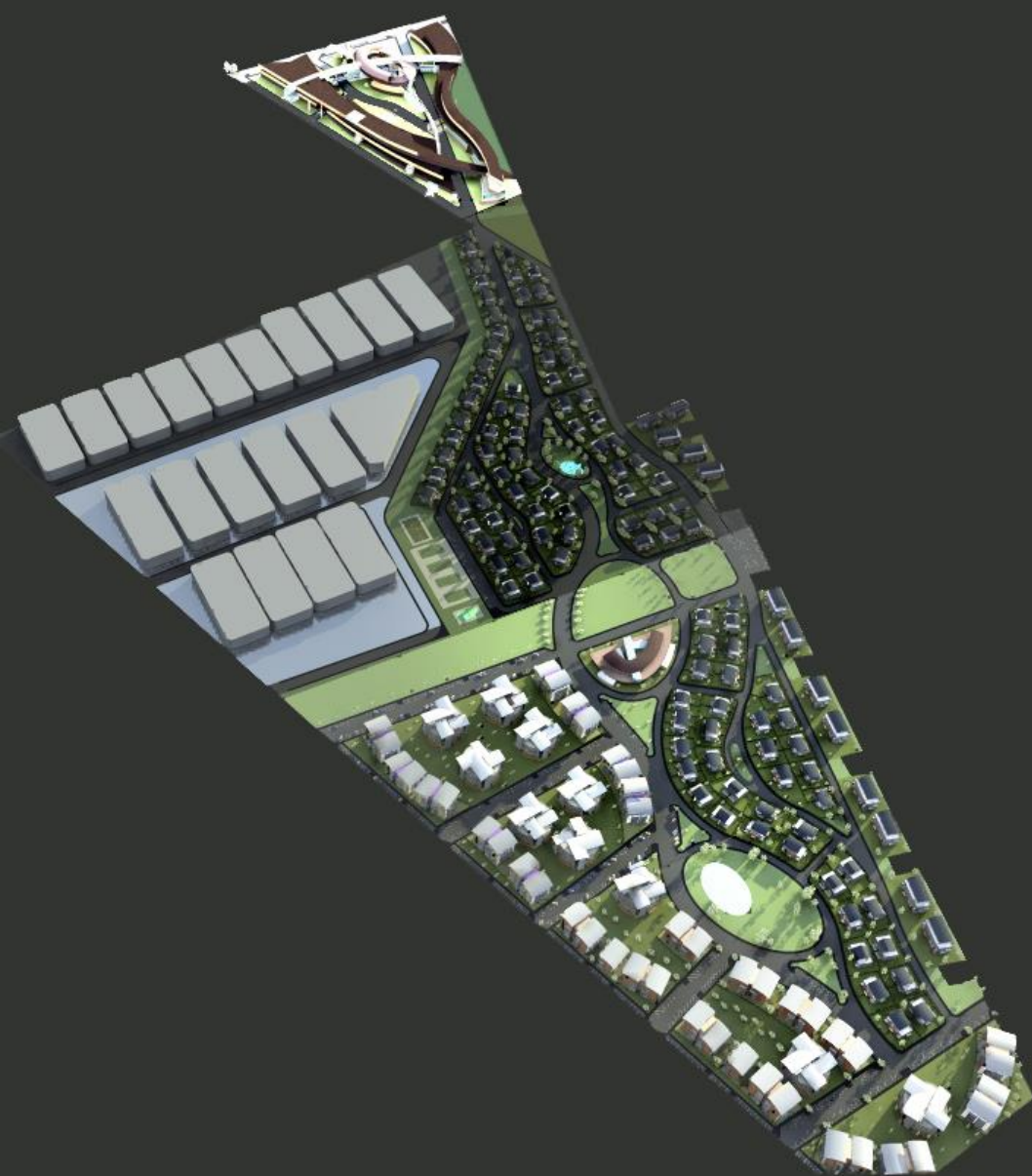


**“Crevedia” Residential  
Compound in ROMANIA**  
Architectural Services

Commercial Buildings

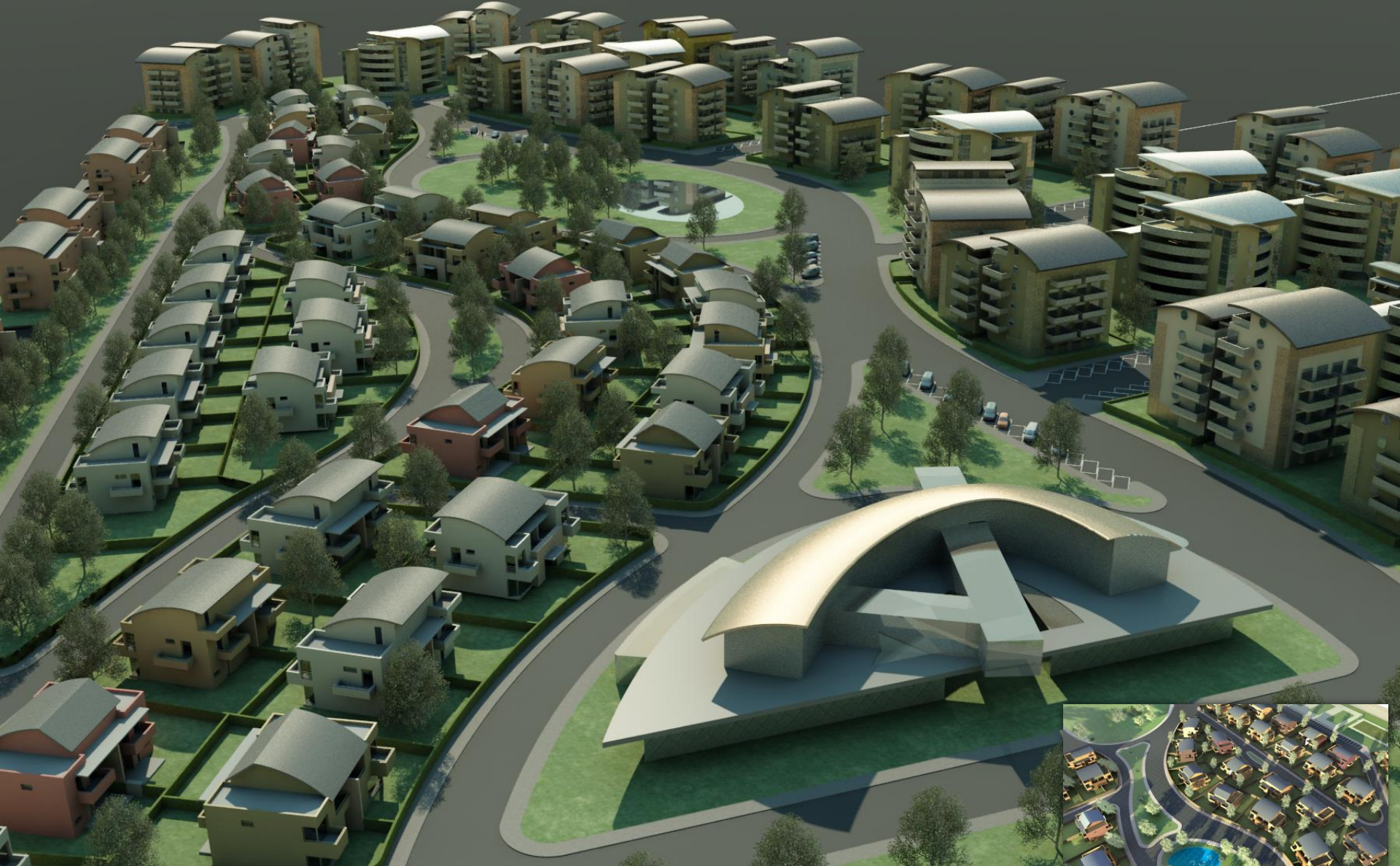






**“Dream City” Residential Compound in ROMANIA**  
Architectural Services





**“Dream City” Residential Compound in ROMANIA**  
Architectural Services





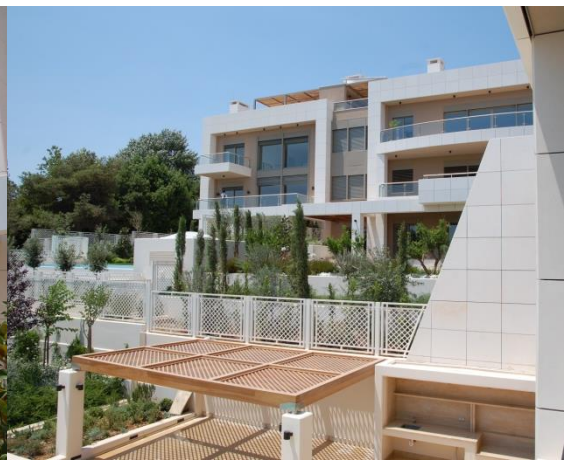
**MELFA Residential Compound in GREECE**  
 Electromechanical Services



**Reporters Residential Compound at Lofos Pallinis, Greece**  
 Structural Services



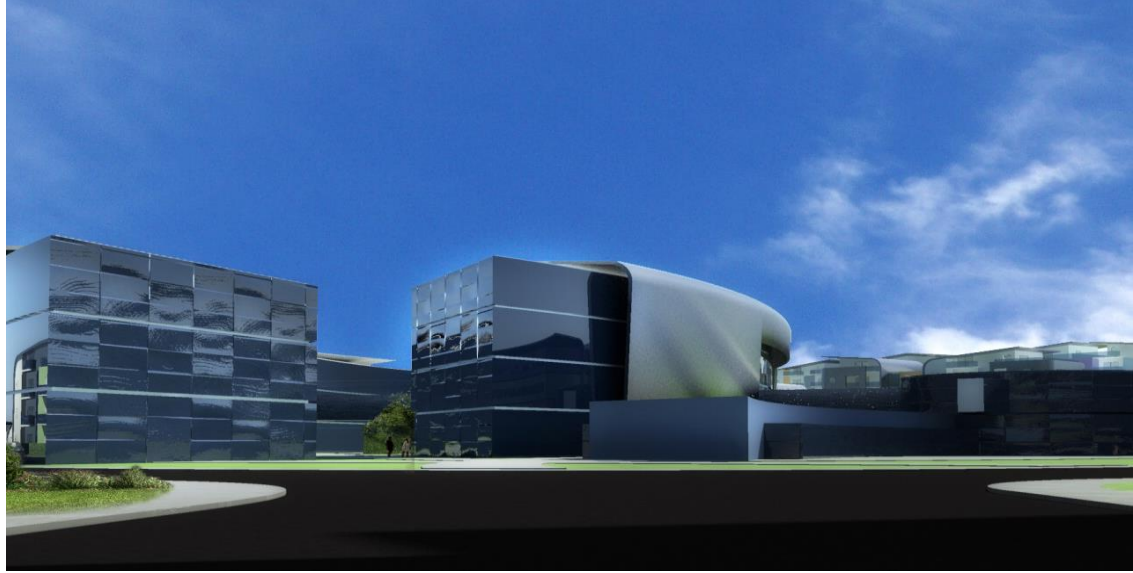
**Residential Compound at Filothei, Greece**  
 Structural Services







**FELIX in ROMANIA - Architectural Services**



**BLUE CITY, Muscat / Sultanate of OMAN**  
Structural Services





# 13. RESIDENTIAL

---



We have a remarkable experience in designing housing projects by combining modern construction methods and materials together with functional design and form, to achieve the highest possible quality, always in accordance to the client's interests and scope of work.

**We have successfully designed more than 600 private residents.**





**One Lake District in Bucharest, Romania**  
Architectural Services





**One Floreasca City Towers in Bucharest, Romania**  
Architectural Services





**One Peninsula Housing Complex in Bucharest, Romania**  
Architectural Services





**Private Mansion, Lebanon**  
Architectural Services

RESIDENTIAL DESIGN





**Private House at Folegandros, Greece**  
Architectural Services







**Private Villa at Kea, Greece**  
Architectural Services







**Four houses in Lindo, Rhodes**  
Architectural Services





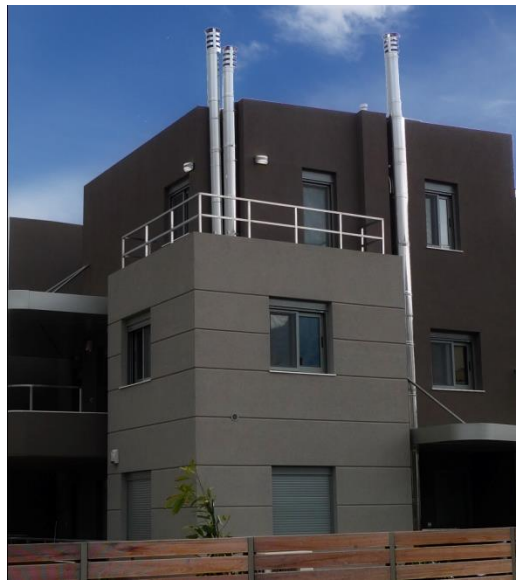
**Private House, Corfu - Greece**  
Architectural Services



**Private house, Spetses - Greece**  
Architectural Services



**Private House, Argolida - Greece**  
Electromechanical Services



**Private house, Gliko Nera - Greece**  
Architectural Services



**Restoration of "Sofoliou Residence" in  
Patmos, Greece**  
Electromechanical Services



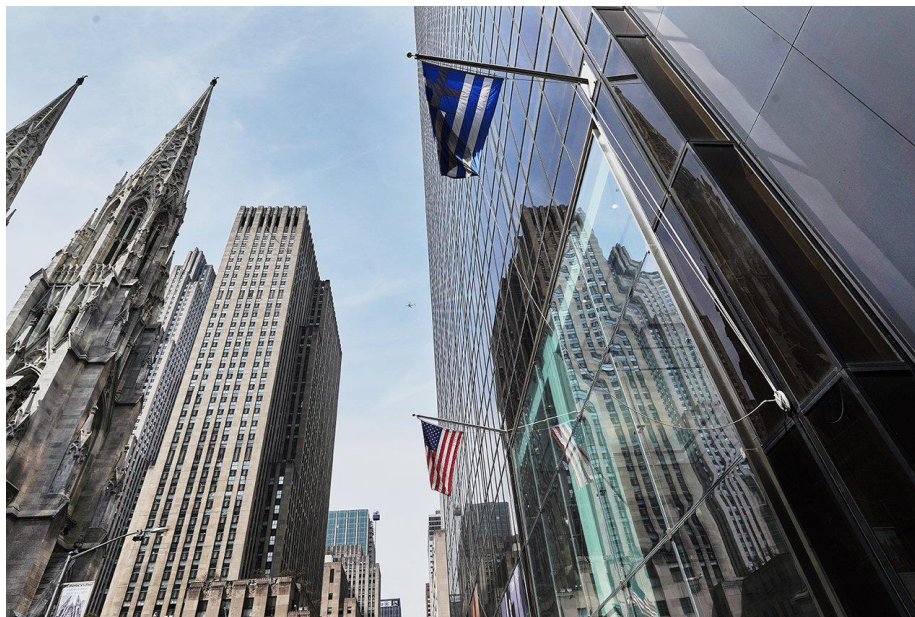


**Napier Gateway Residential Project, London - UK**  
Electromechanical Services



**Jemstock 2 – 18storey Residential Building, London - UK**  
Electromechanical Services

**Olympic Tower, New York - USA**  
Electromechanical Services

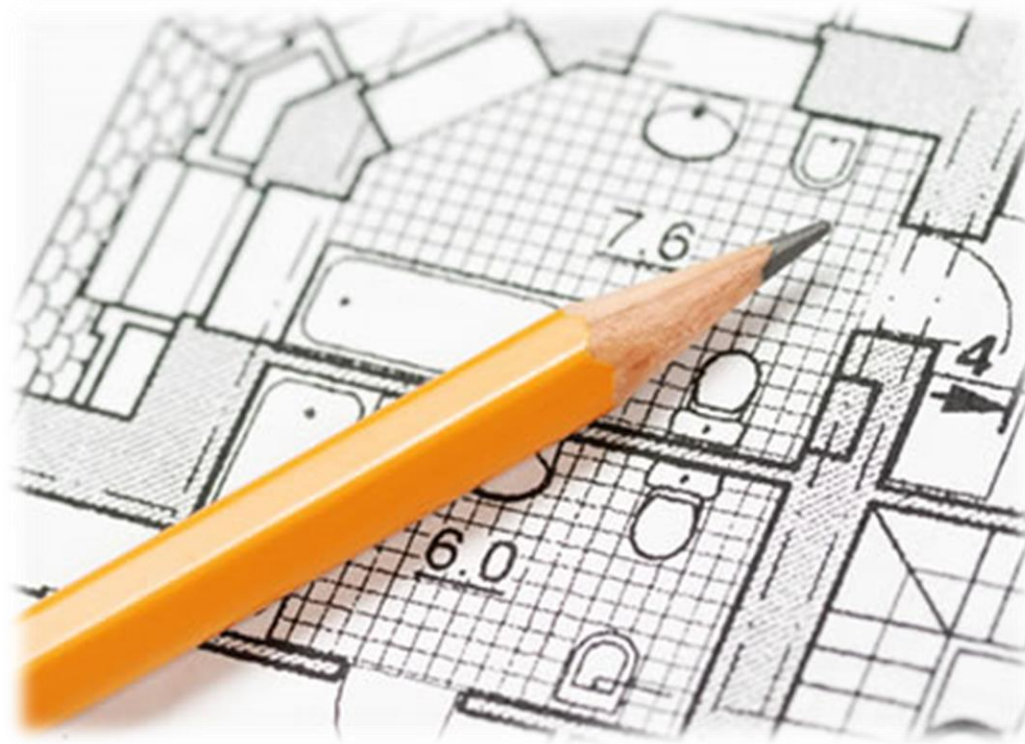




# 14. INTERIOR DESIGN

---

## 1. GENERAL



SIBRAXIS specializes in interior design for all kind of buildings, either residential or commercial. Our areas of specialisation include museum and exhibition design, interior yacht design, corporate identity etc.

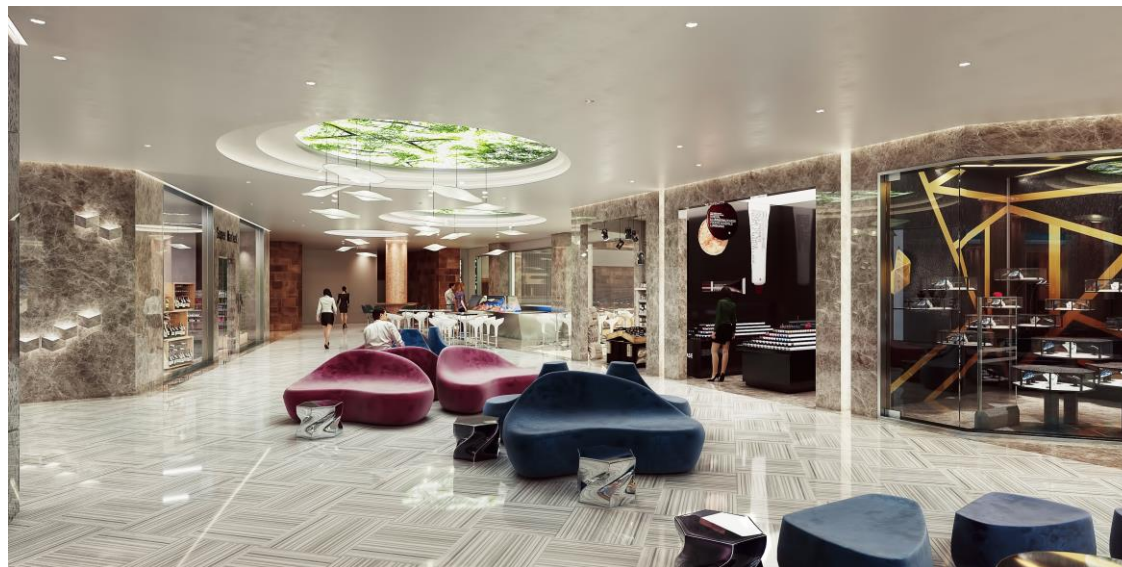




**Village Cinema Café at Ag. Dimitrios Mall, Greece**

INTERIOR DESIGN

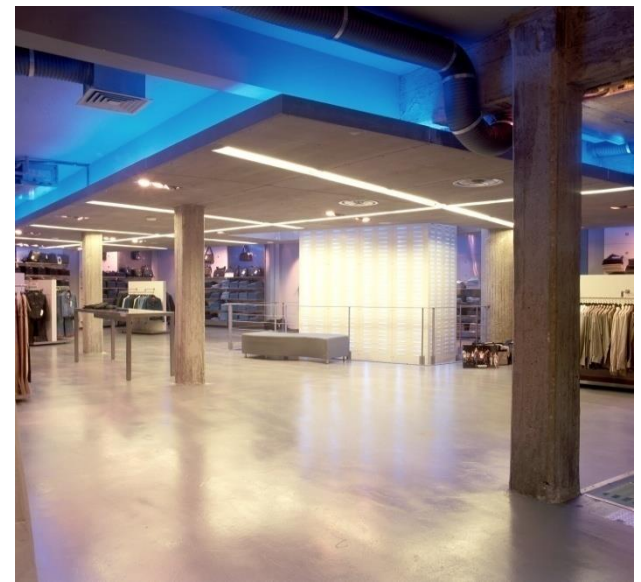








**The CONNECTION Group – Retail Shop**  
Architectural Services



**UNITED SALES chain (45 shops)**  
Architectural Services



**WATERMOTION Showroom**  
Architectural Services



**01 CONNECTIBLE chain (25 shops)**  
Architectural Services



**02 CONNECTIBLE chain (10 shops)**  
Architectural Services





**Yacht Interior Design**



# 14. INTERIOR DESIGN

---

## 2. CORPORATE IDENTITY



SIBRAXIS specializes in creating corporate identity for companies.





**CONCEPT, DESIGN BOOK, DETAIL DESIGN, SITE SUPERVISION**  
**300 OTESHOP (Telecommunication shops) throughout GREECE**  
**Architectural Competition 1<sup>st</sup> PRIZE - Architectural Services**



**PIRAEUS BANK - GREEN BANKING BRANCHES**  
**Architectural Services**



**CORPORATE IDENTITY**







**Forthnet Shops Refurbishment, Greece**  
Architectural Services



**Toyota Hellas retail chain – Construction of a pilot showroom, Greece**  
Architectural Services



# 15. INFRASTRUCTURE

---

## 1. DATACENTERS







**EUROBANK - Greece**  
Electromechanical Services



**Data Center in Romania Fire Protection**  
Electromechanical Services

**SIBRAXIS is specialized in Data Centre and telecom rooms design.**

Such designs need a very thorough risk analysis throughout all disciplines of engineering and necessitate very high expertise.

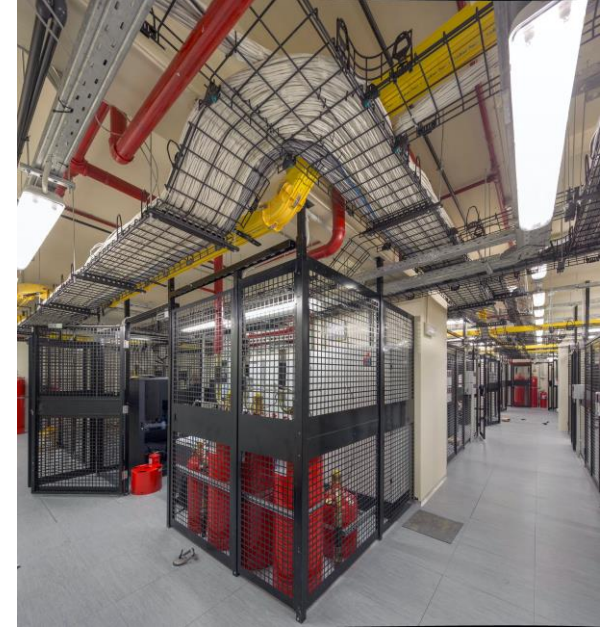
We provide all services needed, from the conceptual design to the commissioning of the project, at the highest possible quality level to ensure the maximum reliability needed in such applications.





**Data Center in Romania Mechanical Room**  
Electromechanical Services

**Interbanking Systems  
(DIAS) SA Data Center,  
Athens - Greece**  
Electromechanical Services



**Eurobank New Data Center & Offices**  
Electromechanical Services



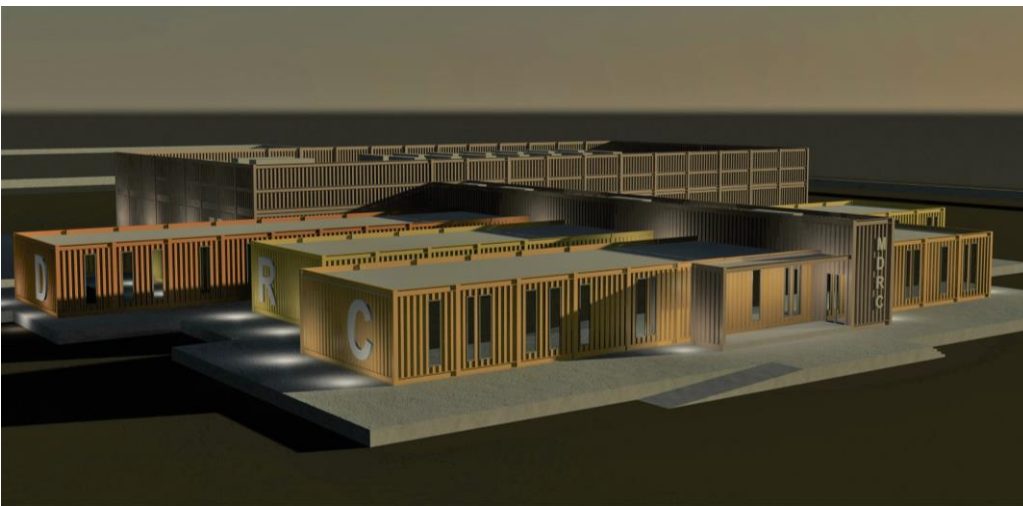




**New Data Centre on behalf of ICS SA and TCC for MOI, Qatar**  
Electromechanical Services



**Silvershadow Data Center**  
Electromechanical Services



**Modular Disaster Recovery Center, Doha - Qatar**  
Electromechanical Services



**Project Integration Centre, Doha - Qatar**  
Electromechanical Services





**New Data Center in Chisinau, Moldova**  
International Competition  
Architectural & Electromechanical Services





**CONSULTING SERVICES FOR THE CONSTRUCTION OF THE DISASTER CENTER OF THE NATIONAL BANK OF KAZAKHSTAN IN ASTANA CITY**  
**International Competition - Architectural, Electromechanical & Structural Services**

**We have successfully carried out around 60 Data Centers and Communication Rooms.**

DATA CENTRES & COMMUNICATION ROOMS



# 15. INFRASTRUCTURE

---

## **2. WATER MANAGEMENT & SUPPLY, SEWAGE, WASTE TREATMENT**







**Research studies and design of the  
environmental infrastructure projects for the protection  
and enhancement of aquatic ecosystems of SW  
Aitolokarnania Upgrading of  
Low Acheloos Water Ecosystem**

SIBRAXIS is used to work alongside its clients and partners, trying to understand their real needs and mobilise their expertise. This model leads to viable and sustainable solutions. The company has great experience in multidisciplinary technological projects including detail engineering design projects in domestic wastewater treatment plants, industrial wastewater treatment plants, sludge treatment plants, water treatment plants etc. The company has developed considerable expertise in many aspects of the water and environment sector such as **Water management, Water Supply, Sewerage Networks, Water & Waste Water Treatment Plants.**





**Management system: net water intake transport and improvement of water from Mornos**  
Hydraulic services





## Water management of Erymanthos River for supplying the Municipalities and Communities of Ilias Prefecture

Design of water supply systems - Tender Documents – Toposurveying- Planning permission and environmental impact study - Geotechnical works - Geological study - Water flow measurements and water quality monitoring - Technical and economic study for financing of works from Cohesion Fund of E.U. – Software development (Database – modelling)





## DESIGN AND BUILD OF KANNAVIOU WATER TREATMENT PLANT

Technical consultant and supervision during construction  
 Water treatment plant of surface water for Paphos  
 Municipalities, capacity 20.000m<sup>3</sup>/d



### A. Aradippou Water Supply System Expansion –Improvements

### B. Alternative Management Options for Aradippou Sewerage System

Master Plan – Feasibility Study – Cost Benefit Analysis - Preparation of Tender Documents - Staff training





Rehabilitation / Renovation of the Athens Water Treatment Plants

**Polydendri Water Treatment Plant** (300.000 m<sup>3</sup>/day)

Hydraulic, Structural, Electromechanical Services





Rehabilitation / Renovation of the Athens Water Treatment Plant

**Galatsi Water Treatment Plant** (600.000 m<sup>3</sup>/day)

Hydraulic, Structural, Electromechanical Services





Rehabilitation / Renovation of the Athens Water Treatment Plants

**Aharnai Water Treatment Plant (850.000 m<sup>3</sup>/day)**

Hydraulic, Structural, Electromechanical Services





**Psyttalia - Athens waste water treatment plant**  
Hydraulic. Structural, Toposurveying Services





**Wastewater Treatment Plant Municipality of Patras (360.000 P.E.)**

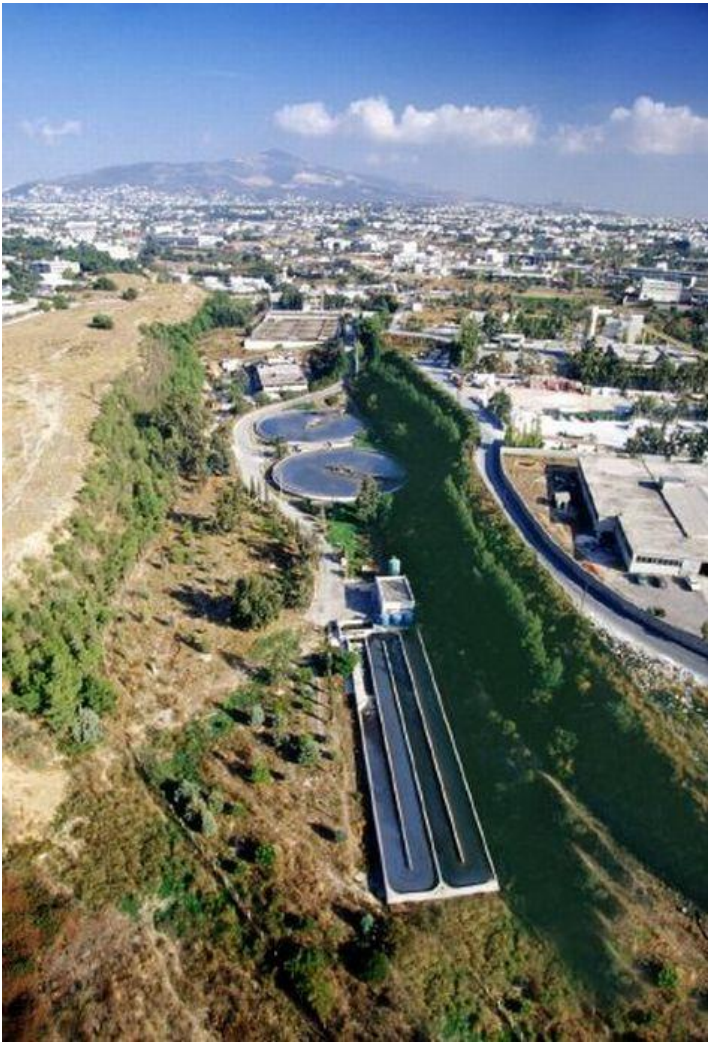
Hydraulic, Structural, Electromechanical Services





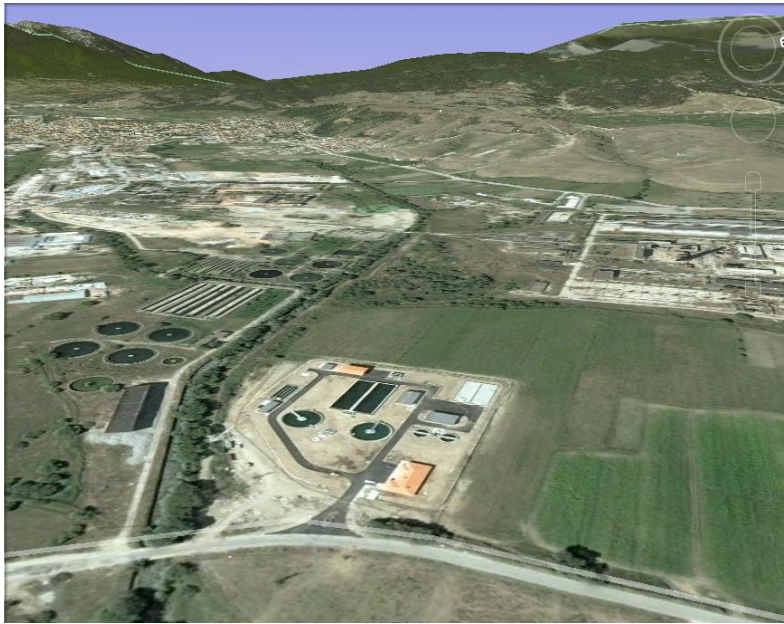
**Extension and completion of the Wastewater Treatment Plant in the city of Salonica (1.300.000 P.E.)**  
Hydraulic, Structural, Electromechanical Services





**Design and Tender Documents for the extension of Athens Sewage Center in Metamorphosis (440.000 P.E.)**  
Hydraulic, Structural, Electromechanical Services





## Construction of the Wastewater Treatment Plant in Razlog Bulgaria

Hydraulic, Structural, Electromechanical, Geotechnical Services



## Construction of the Wastewater Treatment Plant in CONSTANTA Romania

Structural Services



## Technical Assistance for supervision during implementation of the ISPA works contracts in Sibiu (ISPA Measure 2002/RO/16/P/PE/022-02)

## Rehabilitation of the Wastewater Treatment Plant (260.000 PE)

Hydraulic, Electromechanical Services



# 15. INFRASTRUCTURE

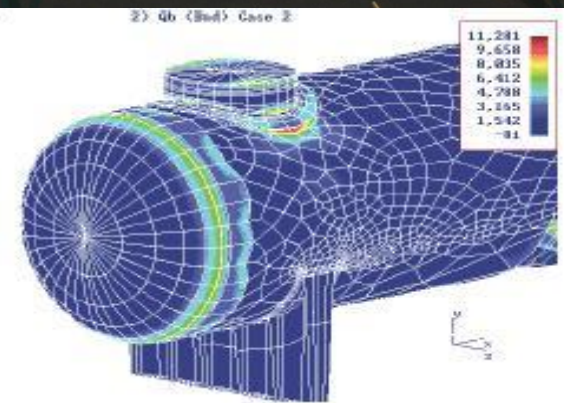
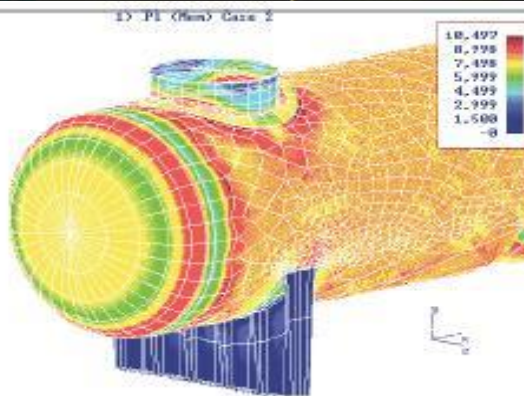
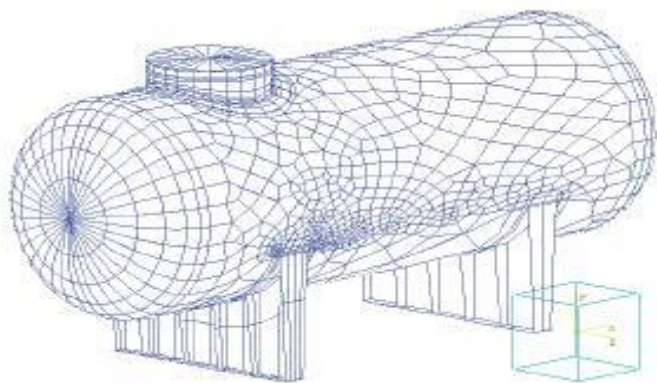
---

## 3. OIL, GAS



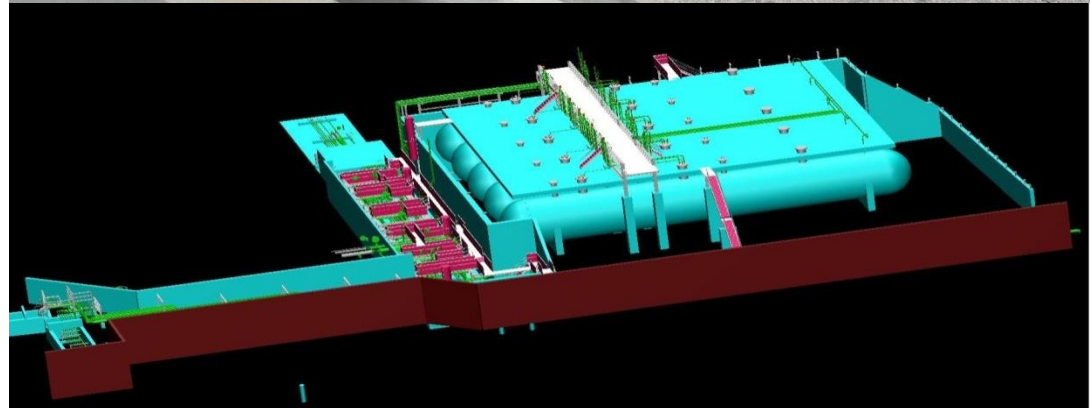
SIBRAXIS is working closely with TECHNIPETROL HELLAS S.A. and thus is able to provide to its Clients a high level of **Multidiscipline Engineering, Procurement and Construction Supervision Services** (E, EP, EPCm) in the Oil & Gas and Energy sectors. We cover projects from grass-root Plants (Refining, Power) to revamping of Installations as well as Utilities & Offsites (Packaged Units, Tank Farms, Loading Stations etc)





By using the latest industry proven software and 3-D design tools, the well trained personnel, supported by the huge TECHNIP GROUP knowledge base and experience, perform projects on-time and at the optimum cost for our Clients. We are able to offer 3-D Modeling even in relevant small projects. Our Models may cover needs from Concept to Detail Design to Construction to Operations & Maintenance. Design Review may be done from any place in the World.





**“Encouraging a fair return for all  
Profitability, Sustainability, Performance, Sharing benefits of achievements”**





**BORDER STATION at Feres Alexndroupolis, Greece**  
Structural Services



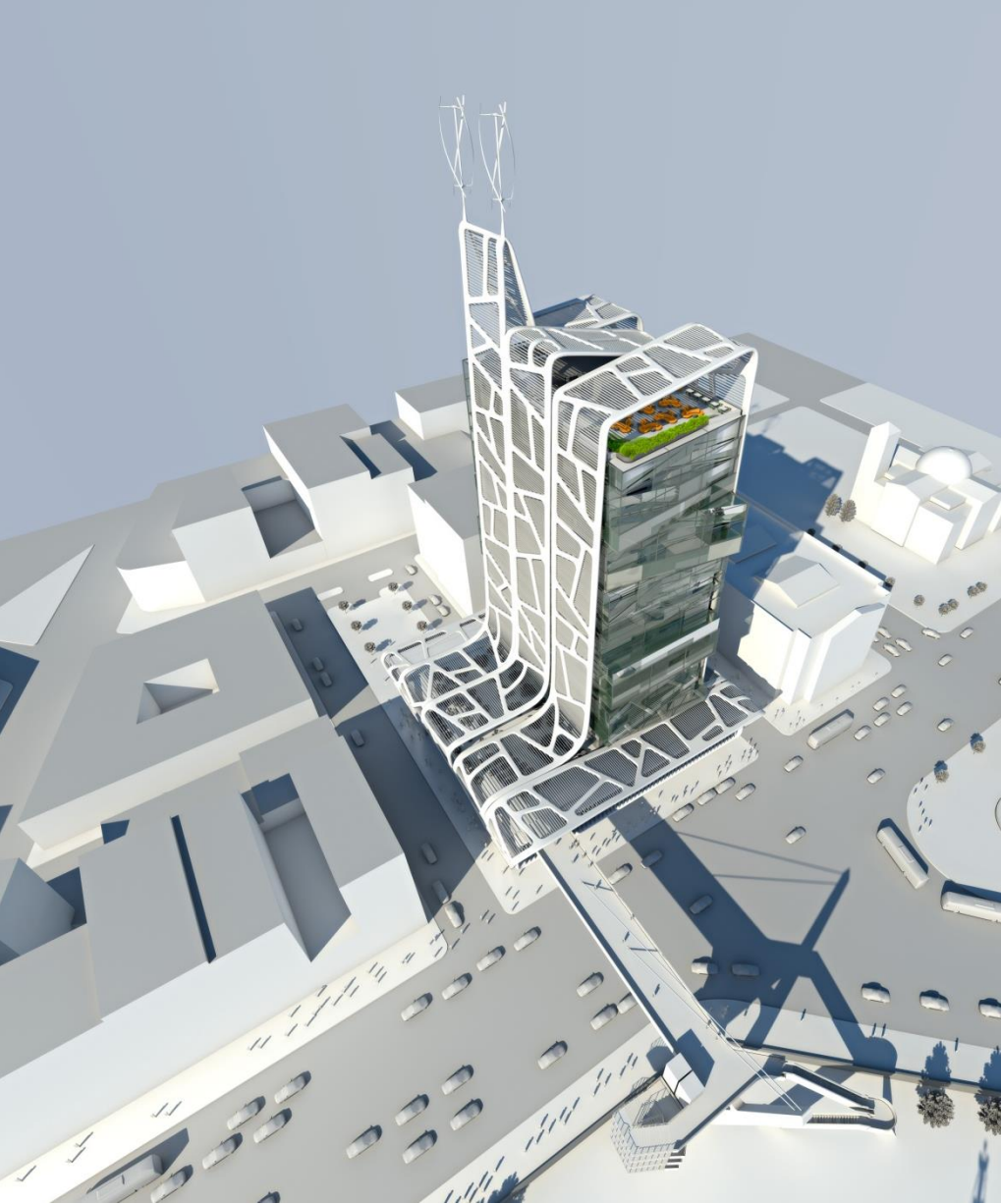
# 16. SUSTAINABILITY & RENEWABLES

---



SIBRAXIS with GPC UK can deliver multidisciplinary integrated services providing energy surveys and audits, energy certification including BREAM, KENAK and LEED, whole lifecycle cost analysis, green building design etc.





**The Piraeus Tower, Greece**  
**Sustainable Design**

SUSTAINABILITY





**The MET Hotel, Greece**  
Sustainable Design



**Green modular zero energy house for Infacoma  
exhibition 2016, Thessaloniki – Greece**  
Electromechanical Services



**BEMS System for Heathrow East  
Terminal, UK**





**SIEMENS Hellas S.A., High Voltage Substations,  
Greece - Albania**  
Structural Services



**Thisvi 421,6 MW Combined Cycle Power Plant, Viotia - Greece**  
Structural Services





**Wind Park, Greece**



**Solar Park, Greece**



**Robinson Club Daidalos, Greece  
Geothermal Energy**

SIBRAXIS is highly involved in design, evaluation, as well as permit procedures for photovoltaic projects, wind energy, biomass and hybrid projects as well as hydroelectric and cogeneration projects. Geothermal energy is also well implemented.

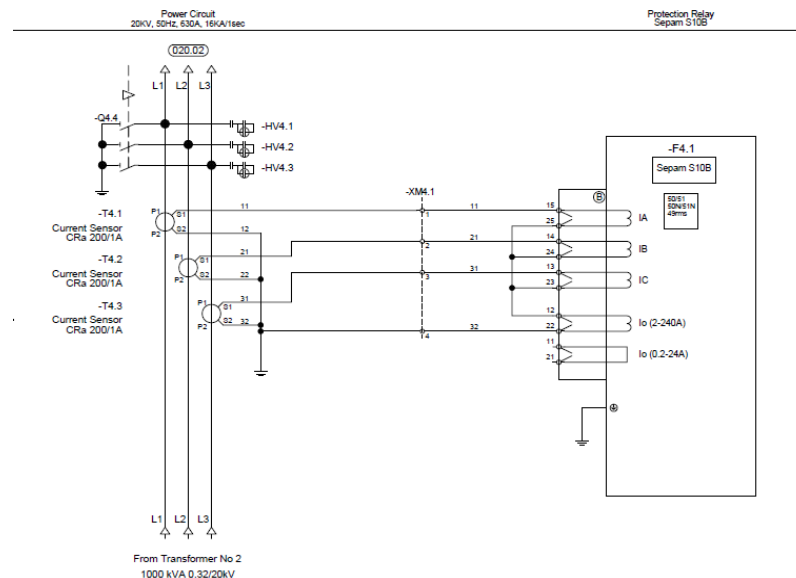
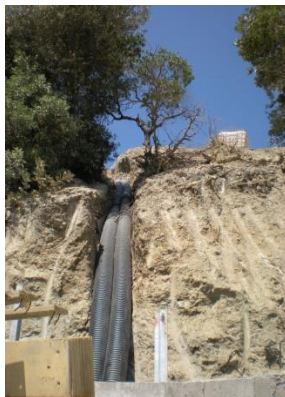


## House at Varibobi, Greece Geothermal Energy





## Photovoltaic Station Power of 1.974 MWp, Laconia, Greece





# CLAIMS PREVENTION & FORENSIC ANALYSIS

---



Through the collaboration of SIBRAXIS EEiG with SCHEMA MANAGEMENT GROUP, we provide expert engineering and construction claim analysis, claims prevention, forensic analysis and project controls management consulting worldwide.





SIBRAXIS has joined forces with SCHEMA MANAGEMENT GROUP, which provides expert engineering and construction **claim analysis, claims prevention and forensic analysis and project controls management consulting** worldwide.

Our mission is dual, both to prevent and resolve problems that negatively might affect the success of the implementation of the projects.

We have the qualifications, capability, know-how, to properly deliver projects, analyze problems and disputes, establish cause and effect relationships, and develop defensible and persuasive opinions relative to the responsibility for problems and resulting schedule delays and cost overruns. We provide our clients with the knowledge to properly manage and control the scope, quality, cost, schedule, and contract administration aspects of their projects and prevent/mitigate problems that may rise.



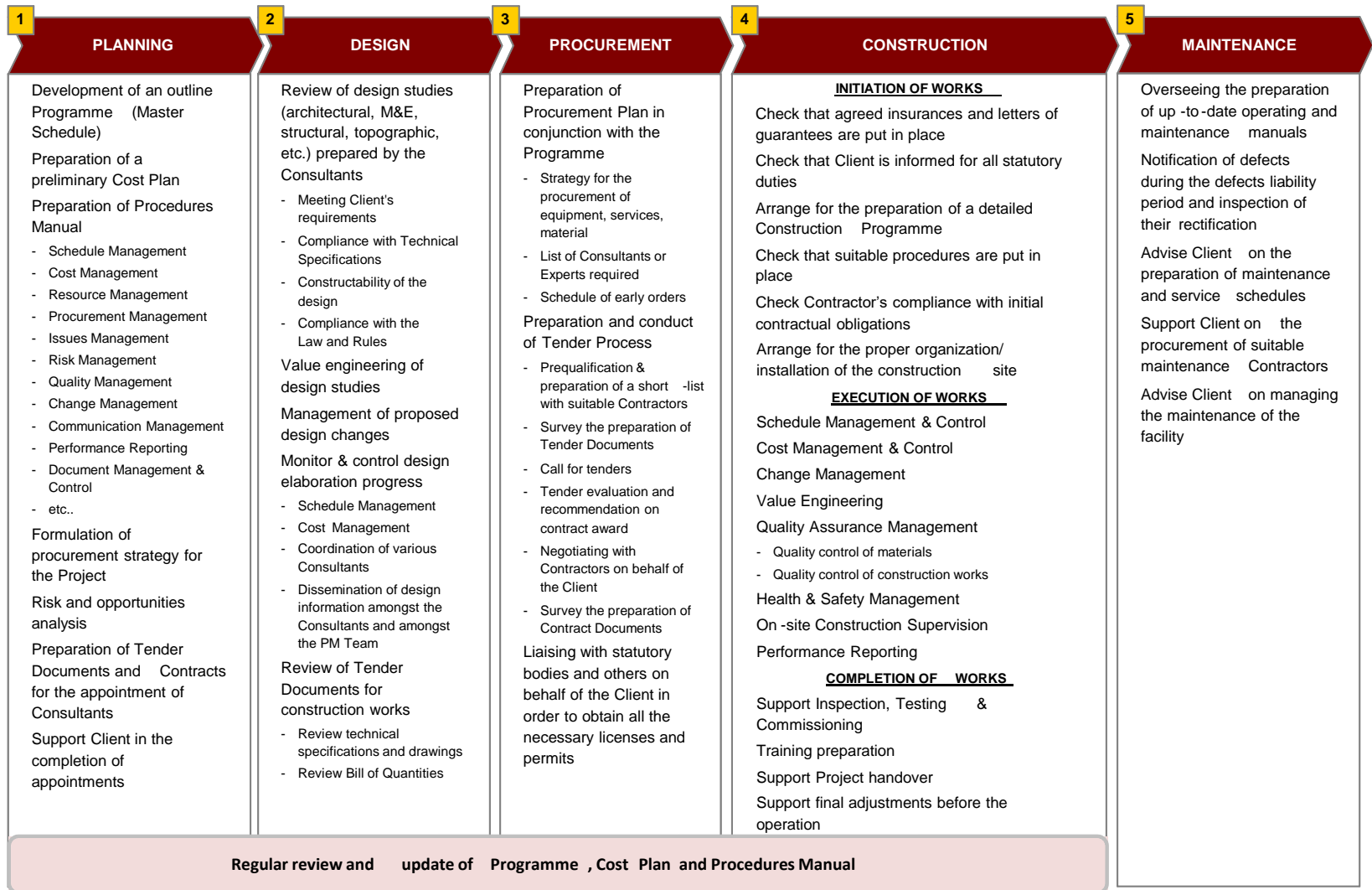
# PROJECT MANAGEMENT

---





SIBRAXIS offers qualitative **Project Management** thought the entire life of a project realization following the attached schematic flow chart:







SIBRAXIS EEIG has an extensive knowledge and expertise in this field, having concluded more than **670 projects in Europe, Greece, the Balkans, Cyprus, Lebanon and other Middle East countries.**

On the operational level, Sibraxis ensures the successful implementation of the development framework by establishing the appropriate programme and project management structures and controlling the effective, timely, and efficient implementation. Furthermore, Sibraxis capitalises on experience accumulated by applying appropriate evaluation frameworks and estimating the impact of interventions implemented.





BUILDING DESIGN – SPECIAL TECHNICAL SERVICES – INFRASTRUCTURE DESIGN – ENERGY CONSULTING – MARITIME DESIGN

COPYRIGHT 2020

European Economic Interest Group of **ARCHITECTS, ENGINEERS, PLANNERS, SPECIAL CONSULTANTS,** and **PROJECT MANAGERS**

---

**2, Ilektras street, 151 22 Athens, Greece // T: +30 210 64 26 749 // E: [info@sibraxis.com](mailto:info@sibraxis.com) // W: [www.sibraxis.com](http://www.sibraxis.com)**